

## SECURITY MANAGEMENT CENTER

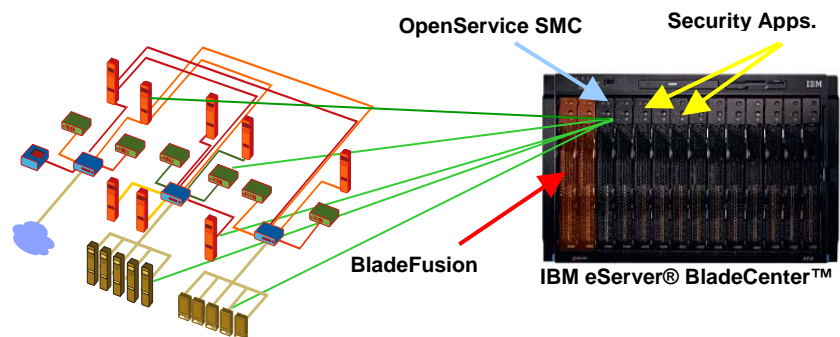
Security in a Box solutions for IBM eServer® BladeCenter™

### Solution Brief

**Best-of-breed security solutions have long been the most-effective choices for securing the enterprise.** However, that approach has resulted in the deployment of a disparate set of products for firewall, intrusion detection, antivirus, vulnerability analysis and other network-centric security functions. This has led to gaps in protection and a high cost of ownership because of the need for multiple management consoles and a lack of integration.

Customer challenges with dedicated security appliance solutions are updating the software and the cost of maintaining additional boxes on the network. Blade server products address many of the drawbacks of appliances and rack-optimized servers. The increasing number of security appliances, ranging from dedicated firewalls, VPNs, intrusion detection systems (IDS), SSL accelerators, gateway antivirus solutions and load balancers make the blades desirable for enterprise and telco use. Consolidating the solutions to a single network element dramatically reduces the management task (managing one box, as opposed to five); provides load balancing and failover support in a single solution, further reducing the number of solutions to be purchased; and improve performance.

In response to the above challenges, IBM with its leadership blade server platform—IBM® BladeCenter™—in partnership with BladeFusion Technologies Ltd. and best of breed security software vendors have jointly created an integrated security platform reference architecture for SMB and enterprise customers – **Security in a Box**. This architecture is based on BladeCenter™, an open, high performance, highly available and scalable platform with potentially much lower cost and better cost/performance ratio compared to the representative competitive vendors.



**Security Management Center** is certified with BladeFusion's SPE™ Secure Production Environment and optimized on IBM eServer® BladeCenter™ which provides a superior blade computing platform for server consolidation, performance and a more manageable environment to achieve efficiencies of operation. SMC builds on the benefits of BladeCenter™ to provide a cost-effective, highly reliable and modular security and compliance management platform.

**"Security Management Center is a comprehensive distributed architecture that can easily and cost-effectively scale from small and medium businesses to global enterprises that process several million security events per day. IBM eServer® BladeCenter™'s open, Linux®-based platform provides carrier class performance, high availability and scalability, at a much lower cost compared to other point solutions. This maps directly to our mission to deliver better corporate security for the lowest long-term cost"**

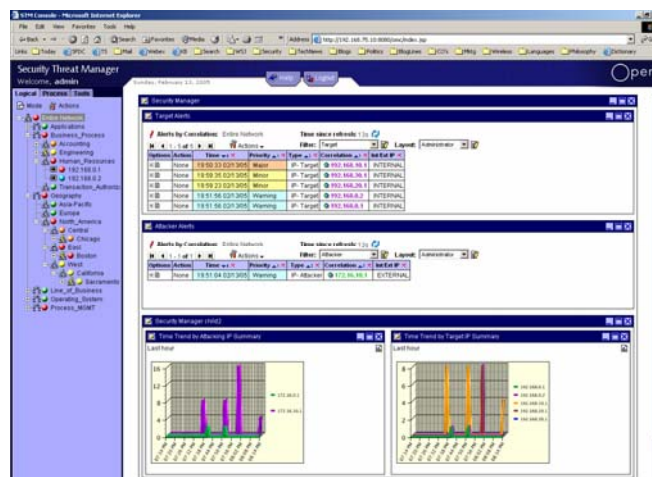
- Ted Joseph, Chairman and CEO of OpenService, Inc.

## Security Management Center

**Security Management Center (SMC)** is a security management framework, consisting of Security Threat Manager (STM) and Security Log Manager (SLM). In a single console dashboard, SMC delivers better security using:

- Real-time threat identification
- Security log management, analysis and archiving
- Security policy compliance reporting

**Security Threat Manager (STM)** collects, analyzes, and correlates event data from security, network and system devices across the enterprise. Events are mapped against vulnerability scans, asset values and business services to identify, consolidate and escalate threats in real-time. The system easily scales for worldwide event correlation, forensic management and IT security compliance, with minimal maintenance and the industry's lowest TCO.



**Security Log Manager (SLM)** stores all security related log events in a compressed database designed to manage billions of events. Its unique reporting engine delivers real-time, on-demand compliance reports, so CSOs, compliance officers and forensic analysts can manage security compliance risks earlier, more effectively and at lower cost.

### Why Security Management Center?

IT security professionals preach defense in depth and attempt to put it into practice; but this vision of layered security is rarely achieved. All too often they merely build islands of automation, individual solutions that can't interact with each other or provide useful insight into the organization's threat and risk posture.

Better security management with log analysis and event correlation using Security Management Center, running on IBM eServer® BladeCenter™, can yield significantly better protection from already deployed security systems with a demonstrable ROI.

**Focus area:**  
Security applications for SMB and Enterprise

**Industries:**  
Cross-industry

## About OpenService

OpenService is the leader in real-time security management software. The company helps global enterprises and government organizations turn deployed security systems into effective enterprise protection. OpenService's enterprise management software solutions employ highly distributed architectures to collect, monitor, consolidate and correlate millions of network and security events per day, in real time.

OpenService is an IBM Business Partner and a member of the IBM BladeCenter™ Alliance Program. Security Management Center is certified with the BladeFusion SPE™ Secure Production Environment. For more information, call 508-599-2000 or visit <http://www.openservice.com>.

