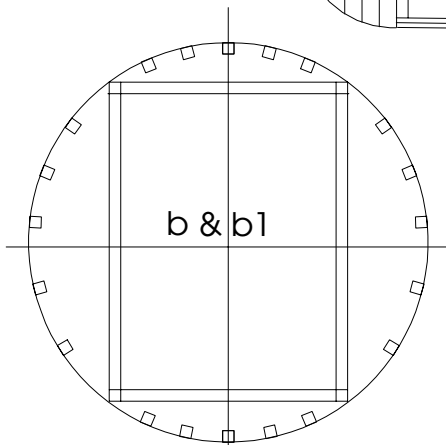
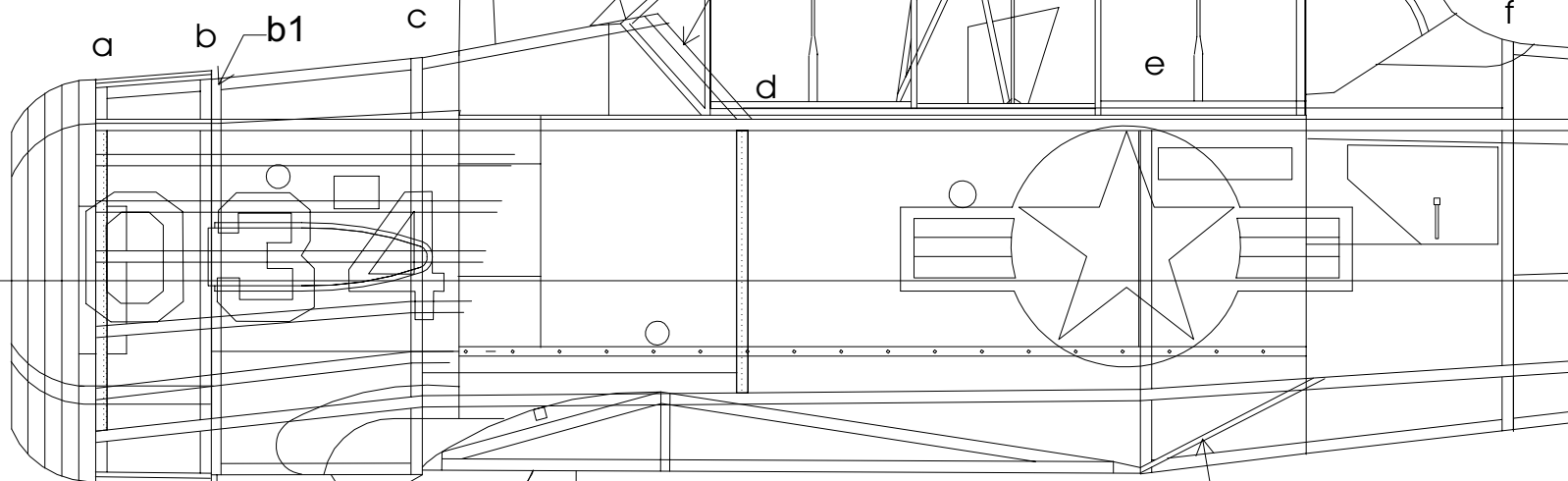
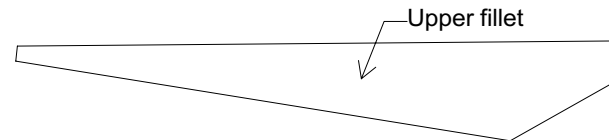
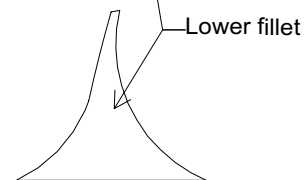
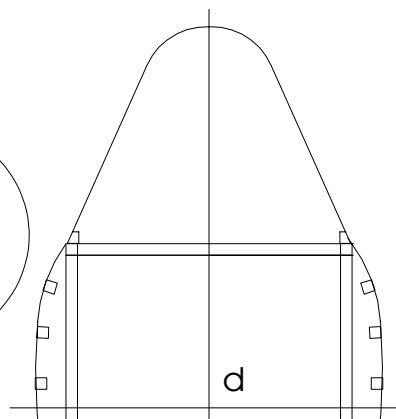
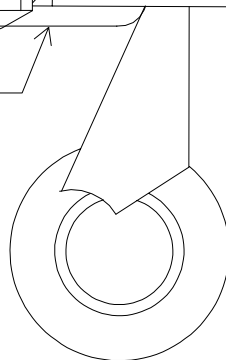
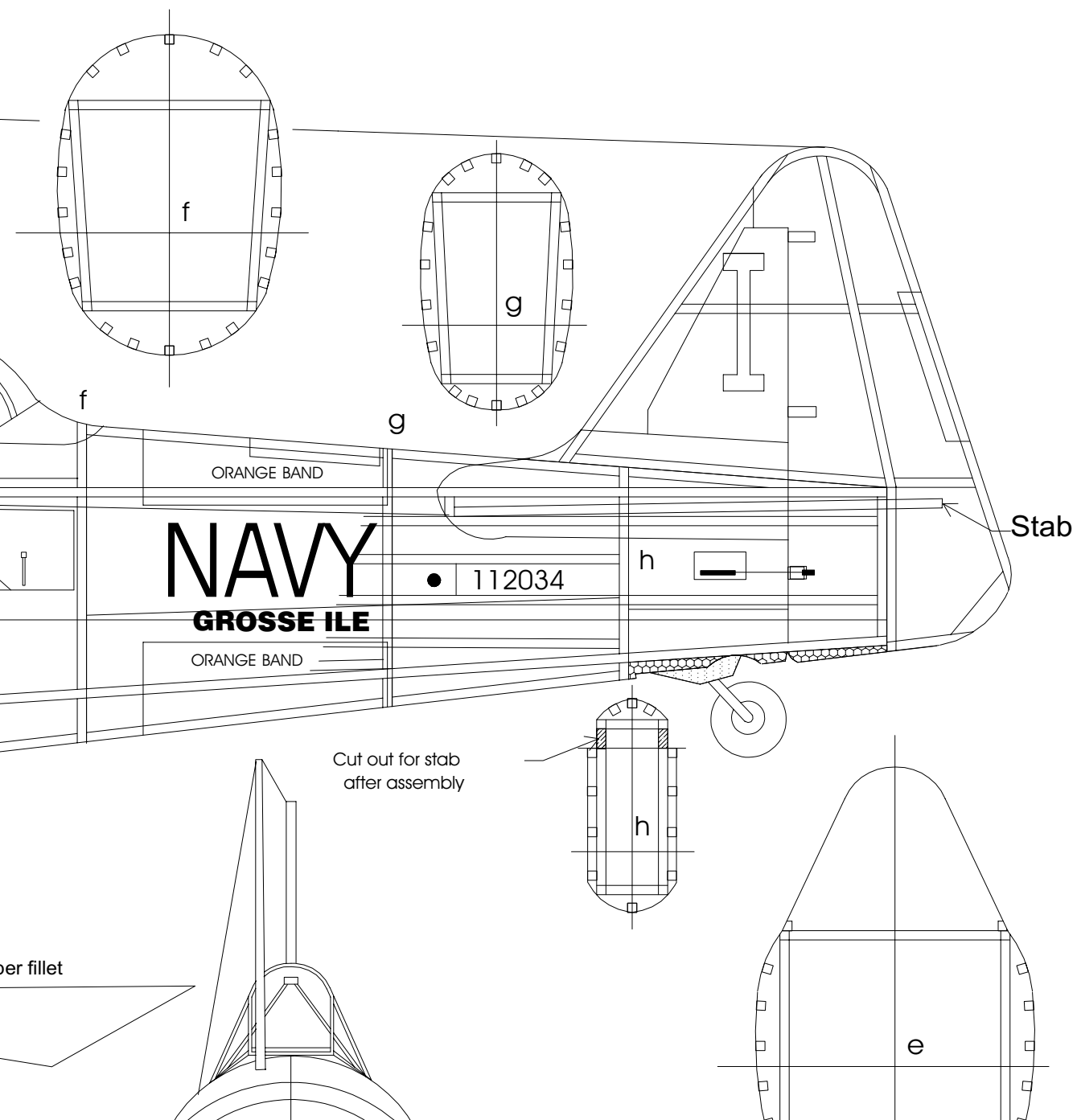


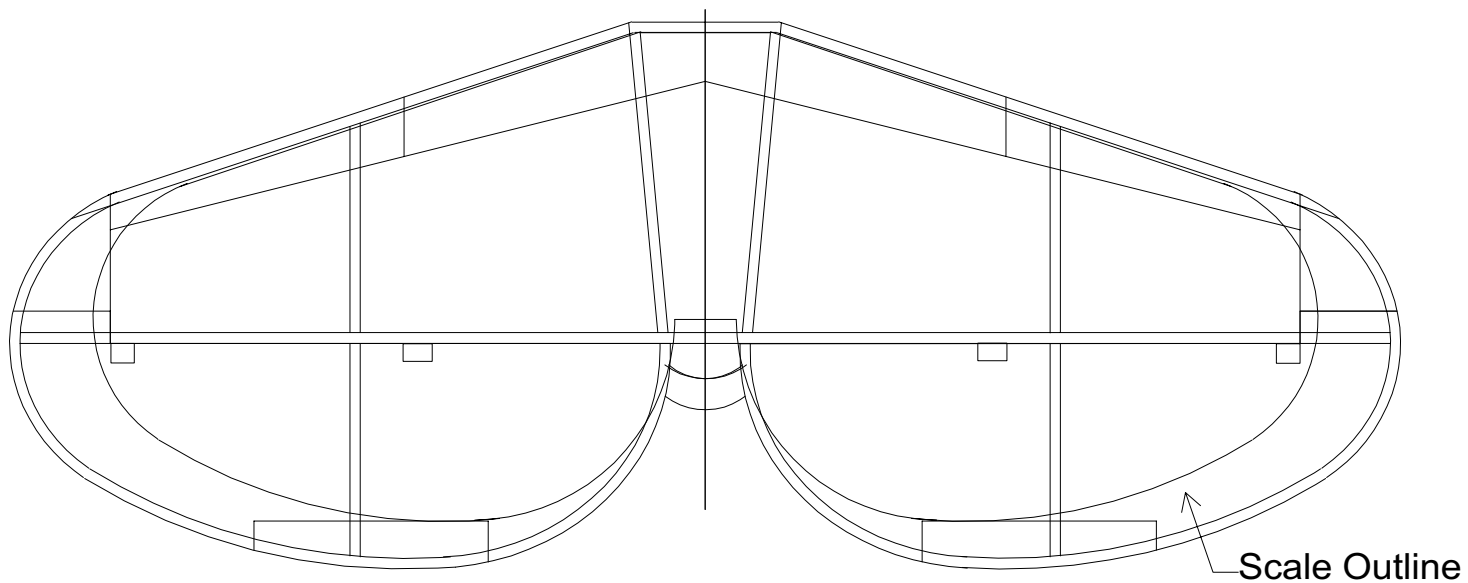
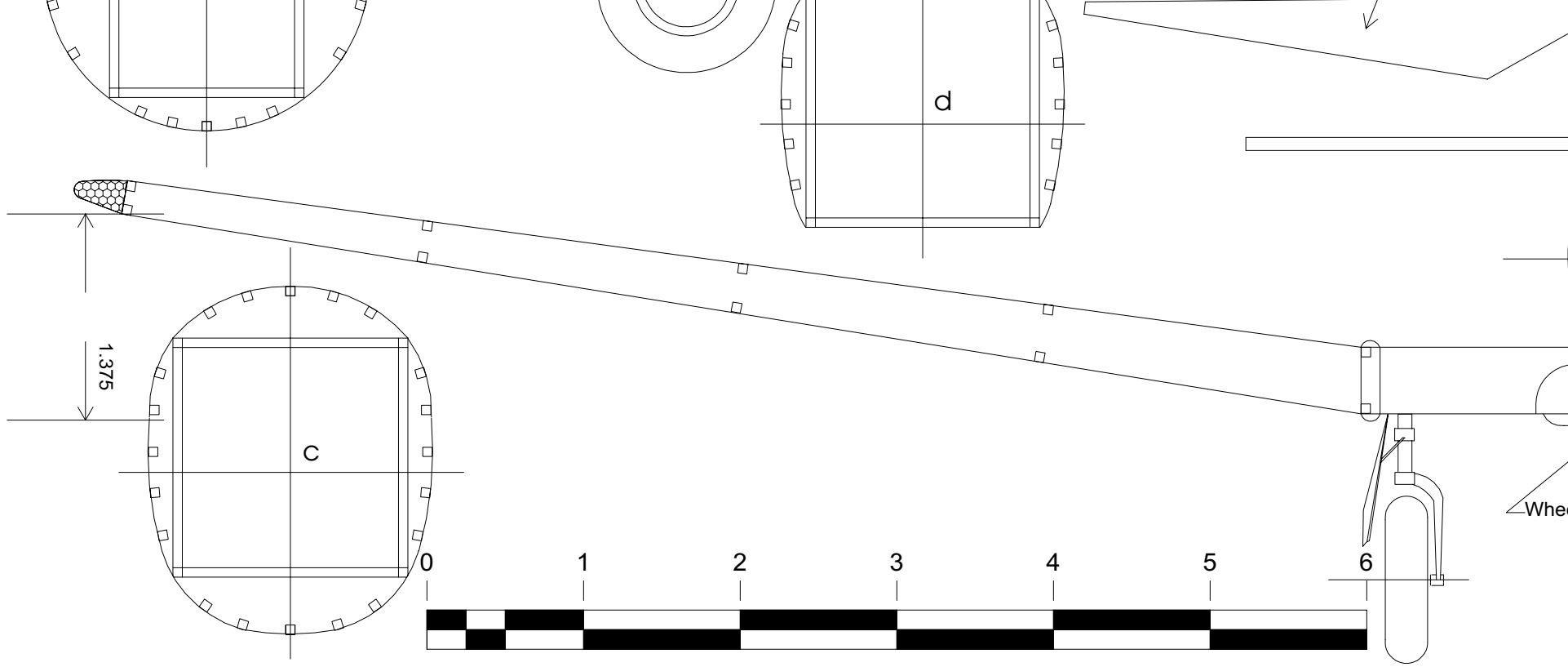
Wrapped With 2 Layers
of 1/32 Balsa From a to b

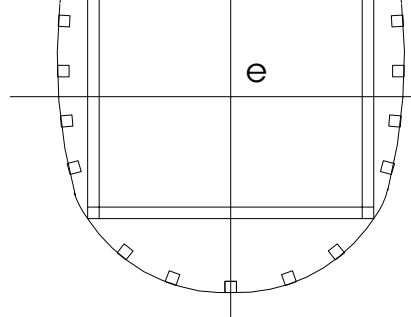
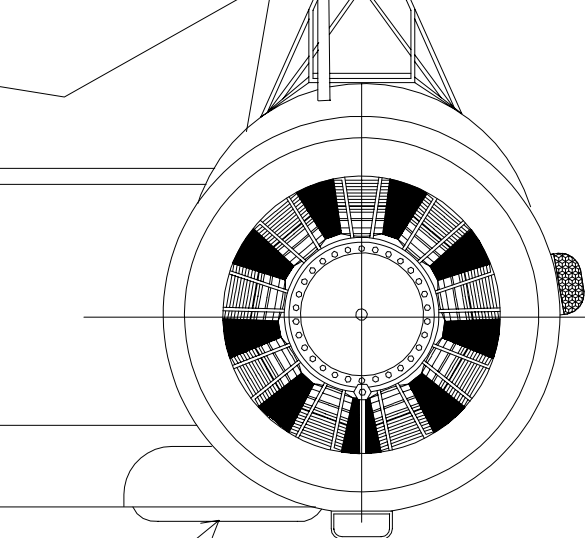


Wheel Retracted









NORTH AMERICAN AT-6

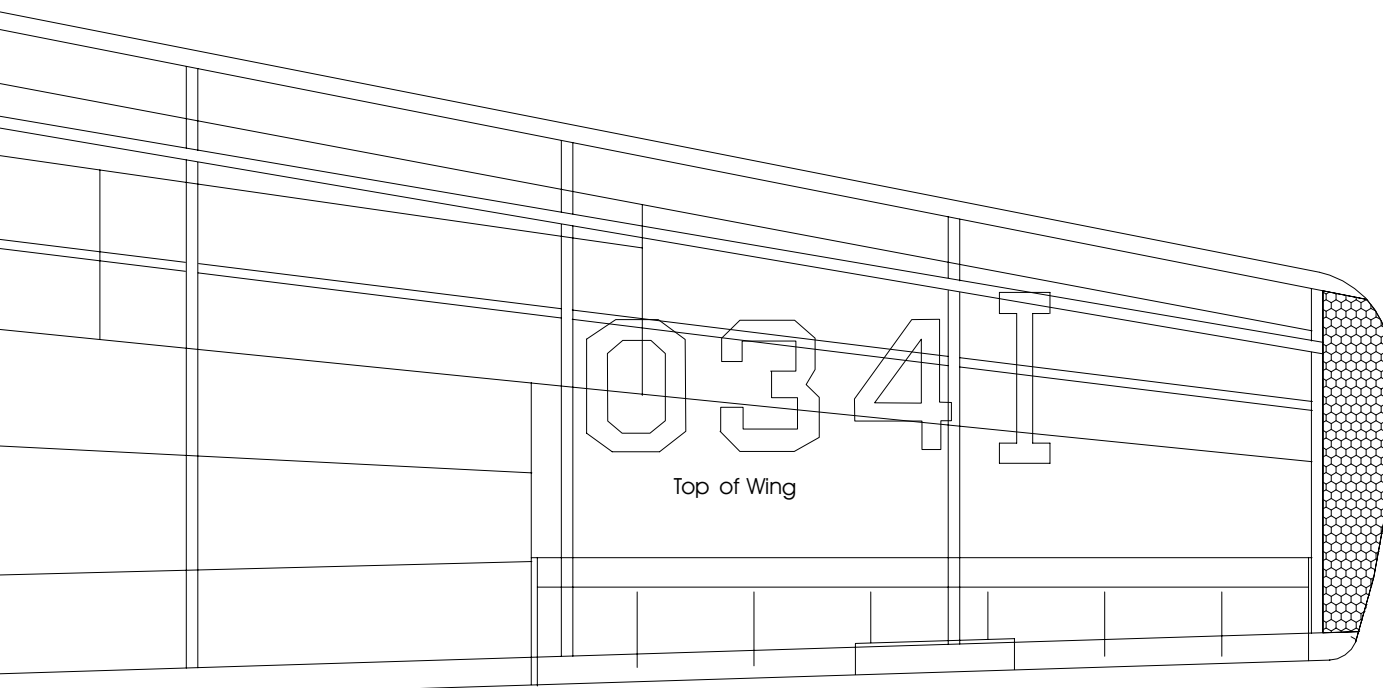
"TEXAN"

(U.S. NAVY SNJ-5)

DRAWN BY : DAVID LIVESAY (12-14-93)

REFERENCES:
PAUL MATT'S
SCALE AIRPLANE DRAWINGS
VOLUME 2

Wheel Retracted



Scale Outline

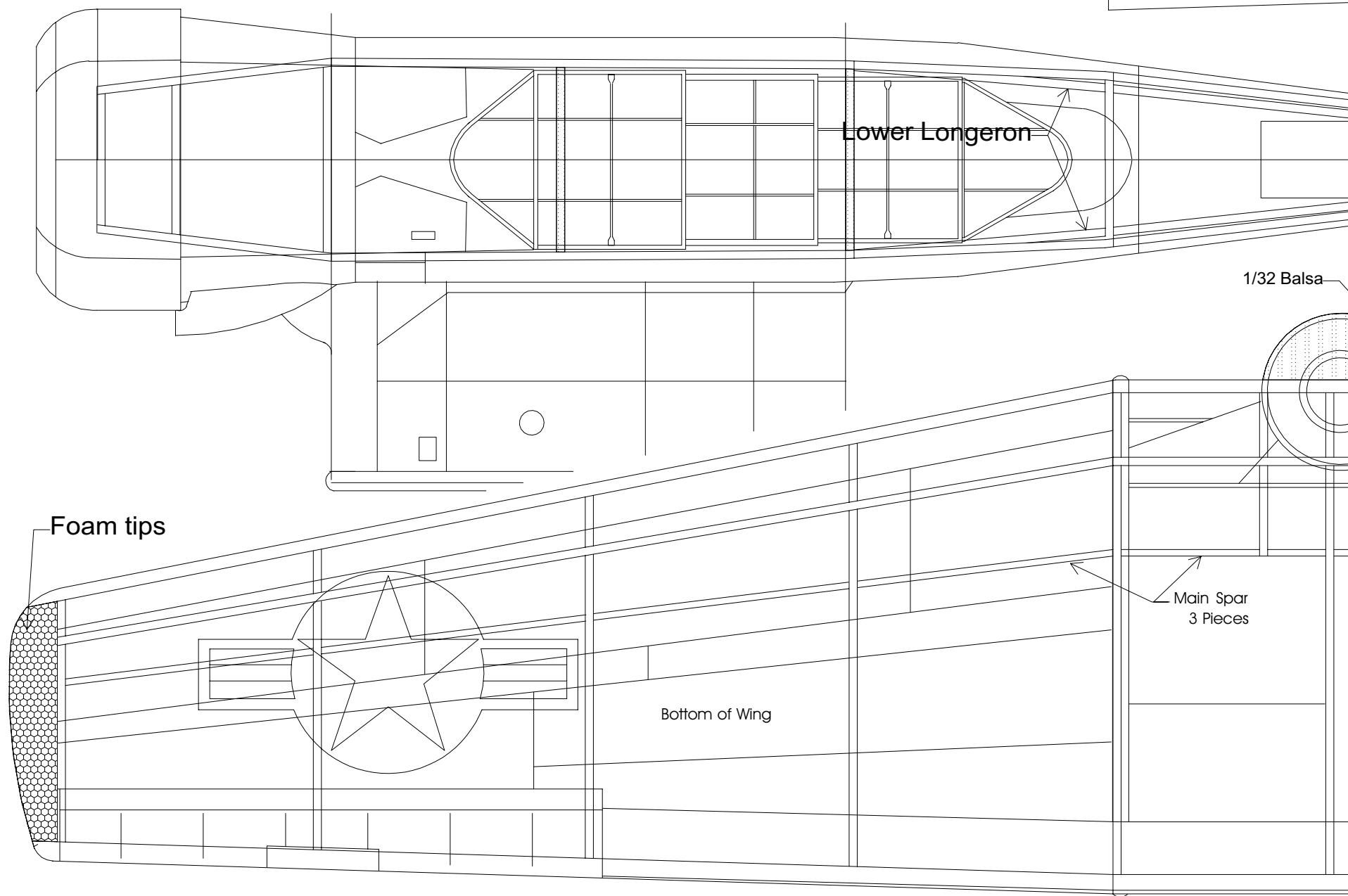
Lower Longerons

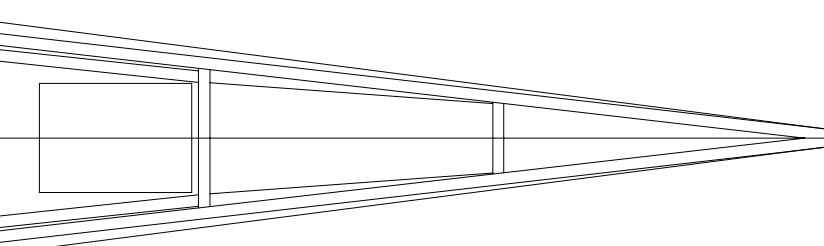
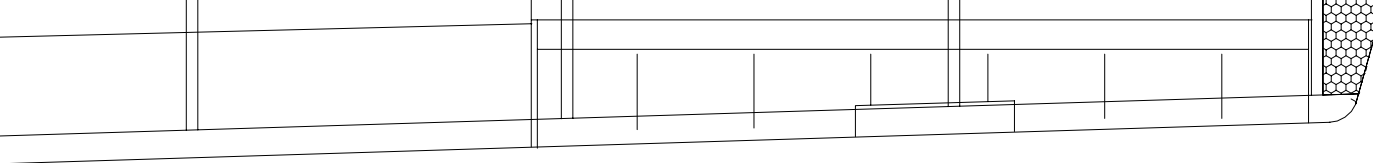
1/32 Balsa

Foam tips

Main Spar
3 Pieces

Bottom of Wing

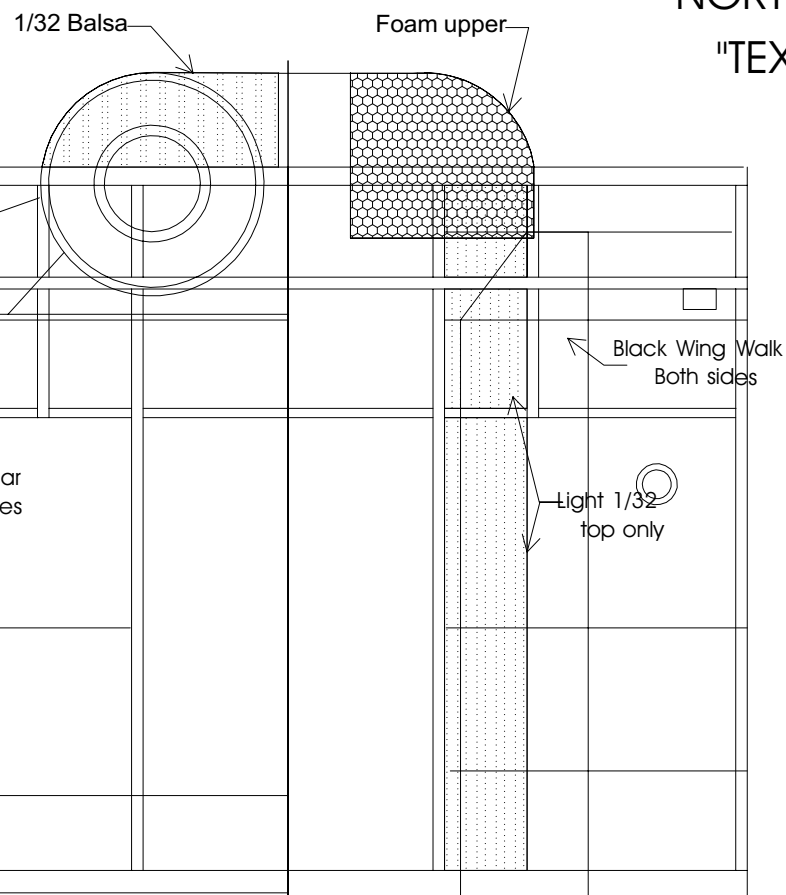




NORTH AMERICAN AT-6

"TEXAN"

(U.S. NAVY SNJ-5)



Building Details:

The wheel wells between the fuselage and wing will have to be shaped to fit the model.
You also might want to fill the lower front and wing area with balsa sheet.