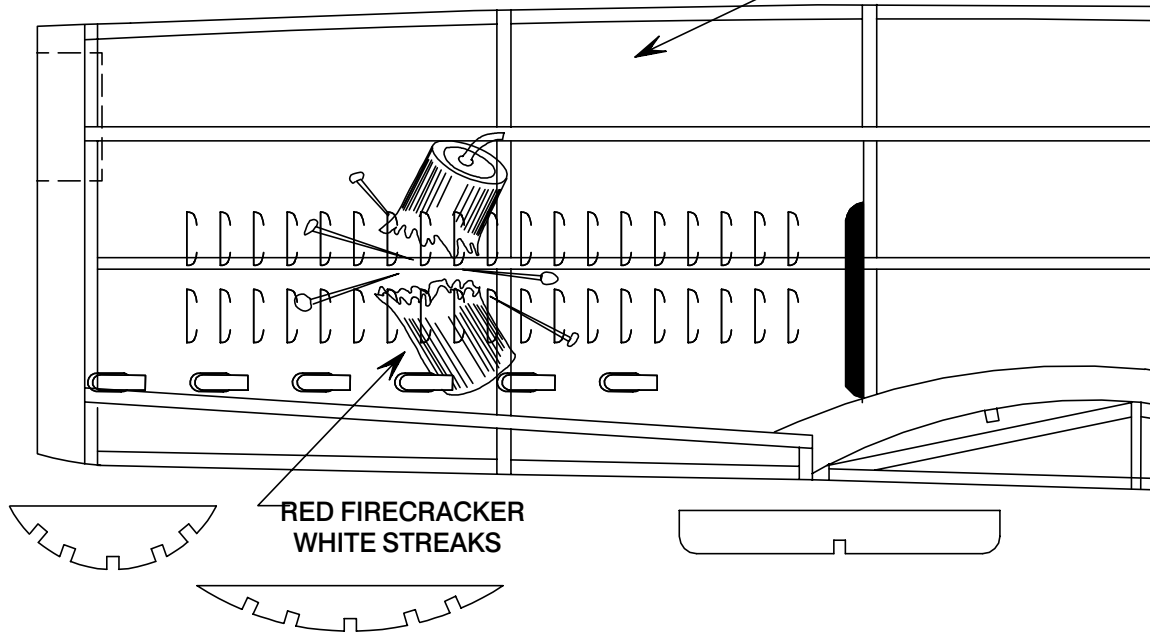
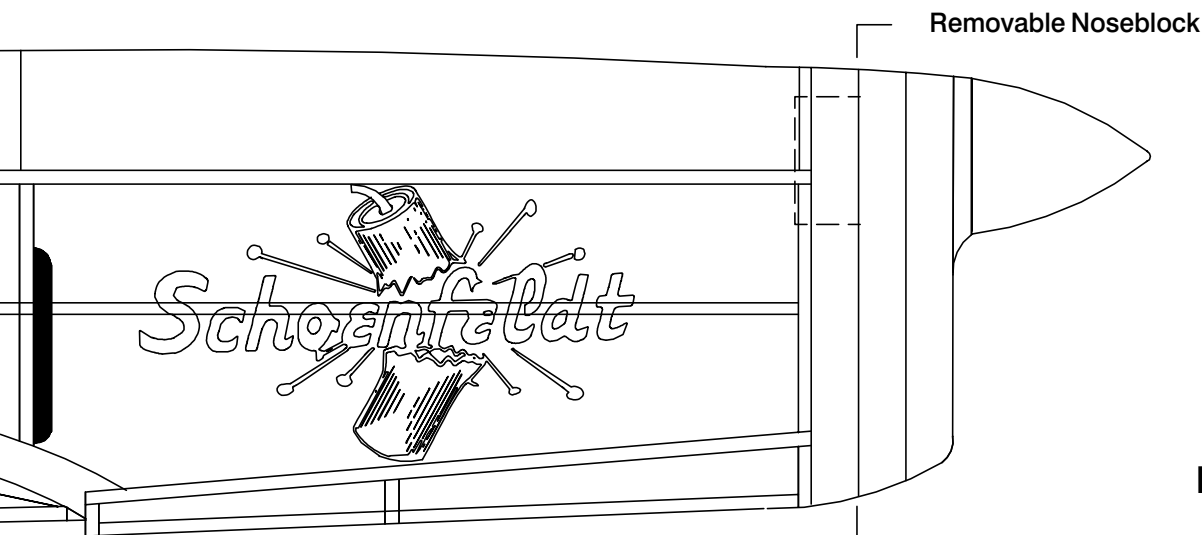


NATURAL COLORED ALUMINUM





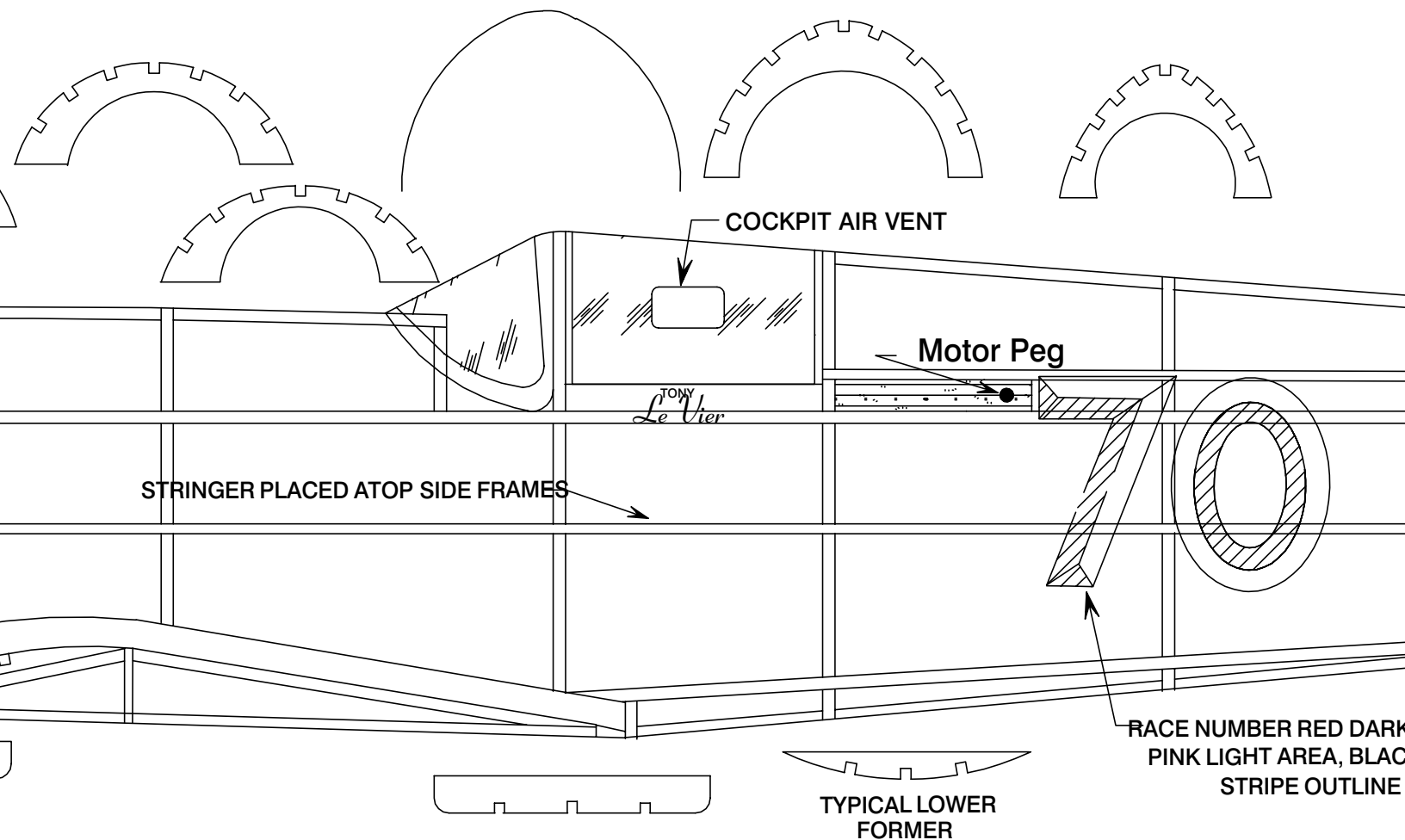
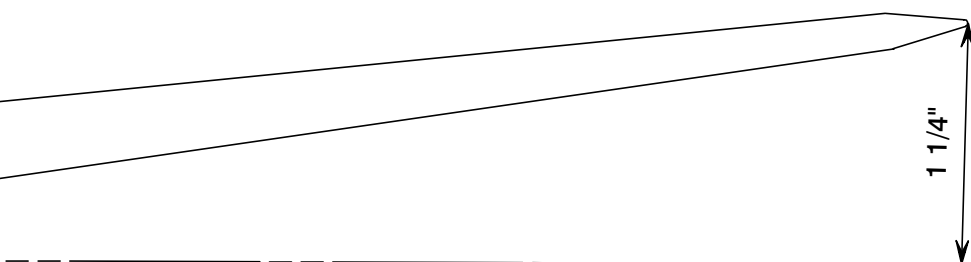
RED LETTERS AND FIRECRACKER
WHITE STREAKS

1937-1939 THOMPSON
AND GREVE TROPHY RA
Keith Rider R-4, 1939 Mod

SCHOENFELDT "FIF" Rubber Scale

DRAWN BY: DAVID LIVESAY (JULY
REFERENCES:

RCM Magazine Dec. , 1972



COCKPIT AIR VENT

Motor Peg

STRINGER PLACED ATOP SIDE FRAMES

TONY
Le Vier

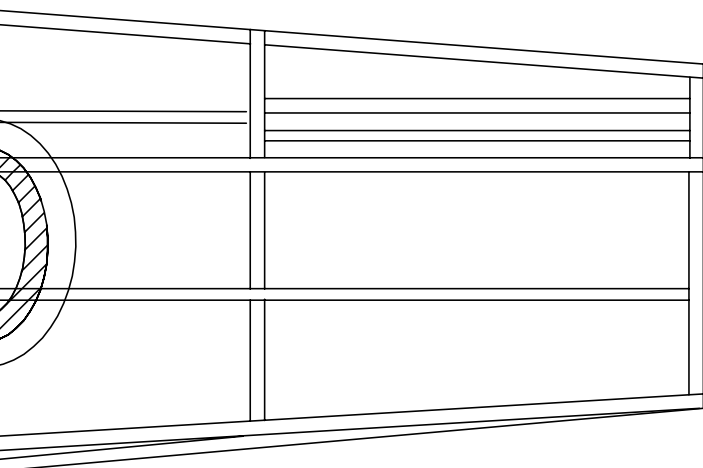
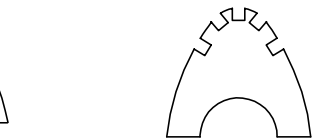
TYPICAL LOWER
FORMER

RACE NUMBER RED DARK
PINK LIGHT AREA, BLACK
STRIPE OUTLINE

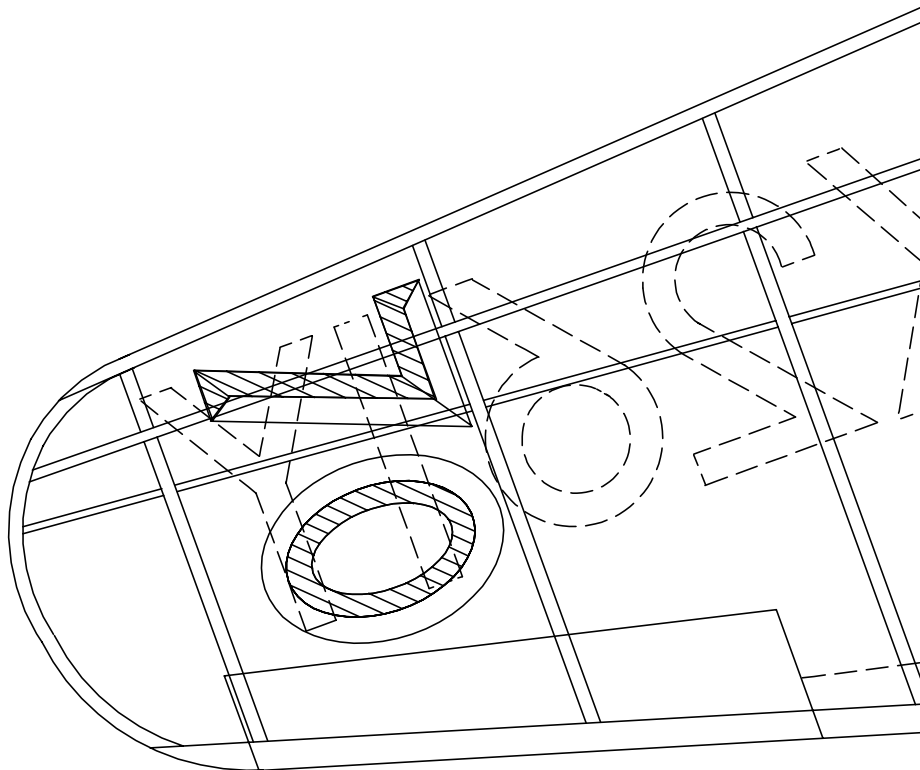
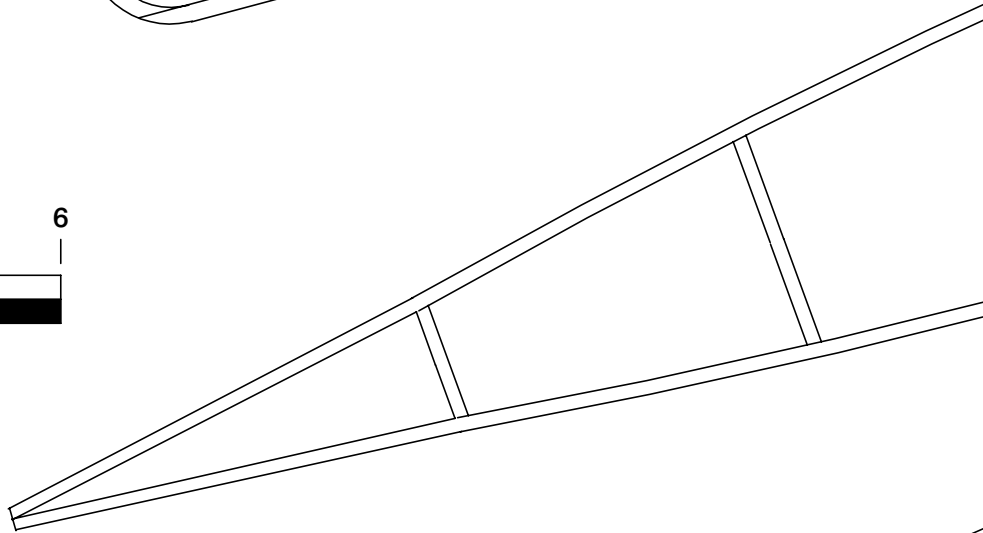
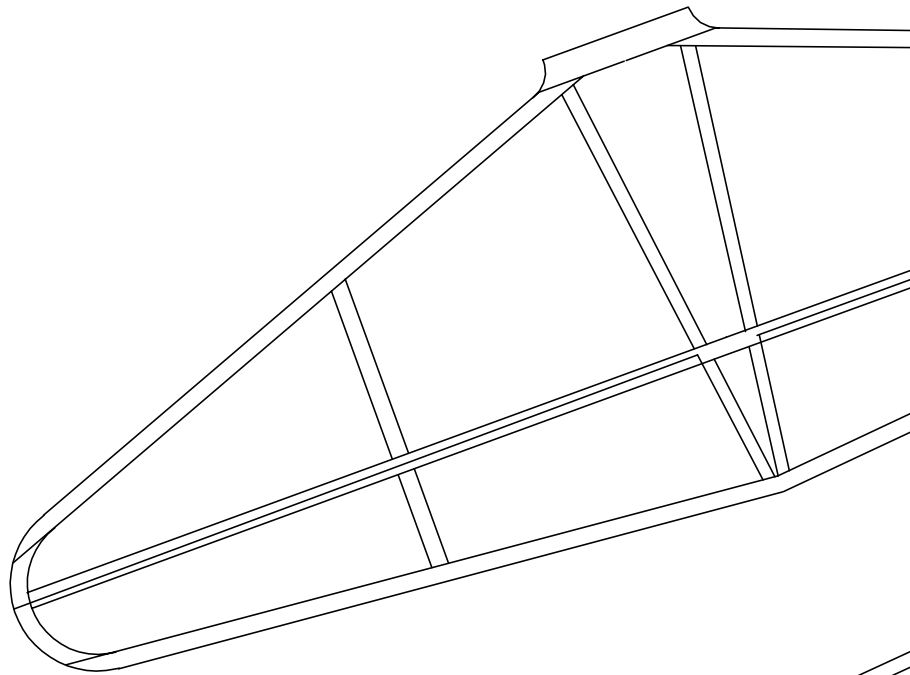
THOMPSON
TROPHY RACER
1939 Modification

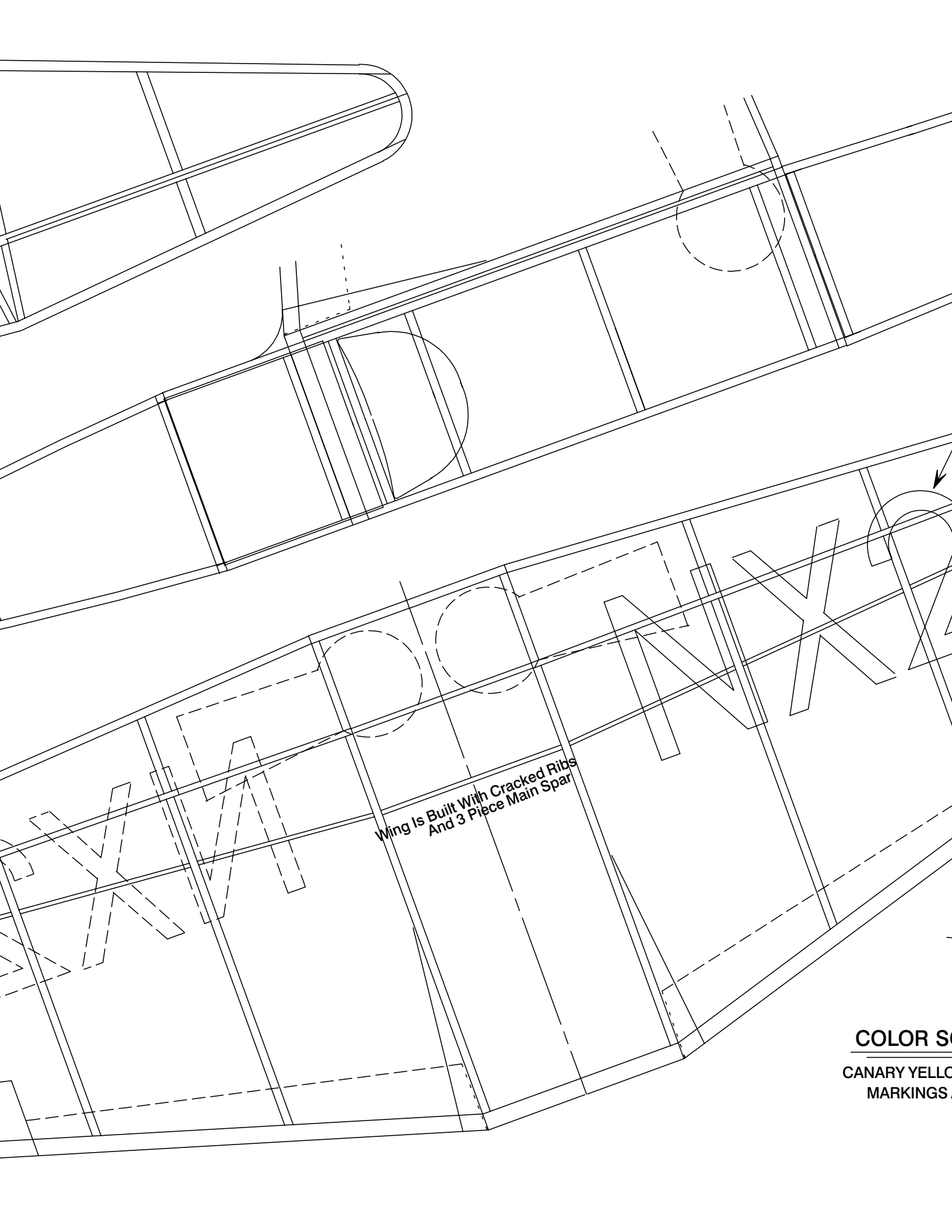
"FIRECRACKER" 1/4" Scale

SAY (JULY 24,1992)
SOURCES:
Dec. , 1972



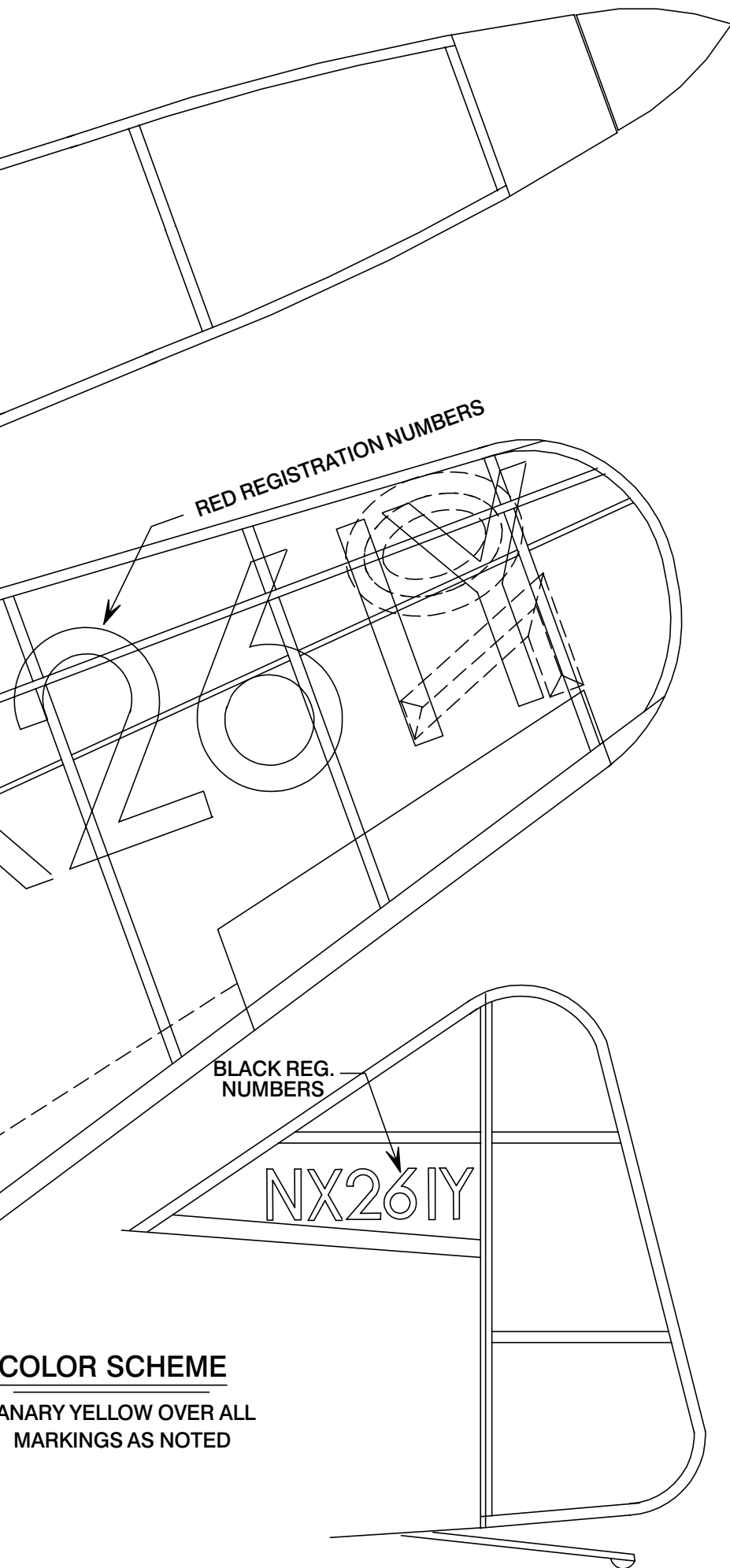
RED DARK AREA,
BLACK PIN
PIPE OUTLINE





Wing Is Built With Cracked Ribs
And 3 Piece Main Spar

COLOR S
CANARY YELLOW
MARKINGS



RED REGISTRATION NUMBERS

BLACK REG.
NUMBERS

COLOR SCHEME

ANARY YELLOW OVER ALL
MARKINGS AS NOTED