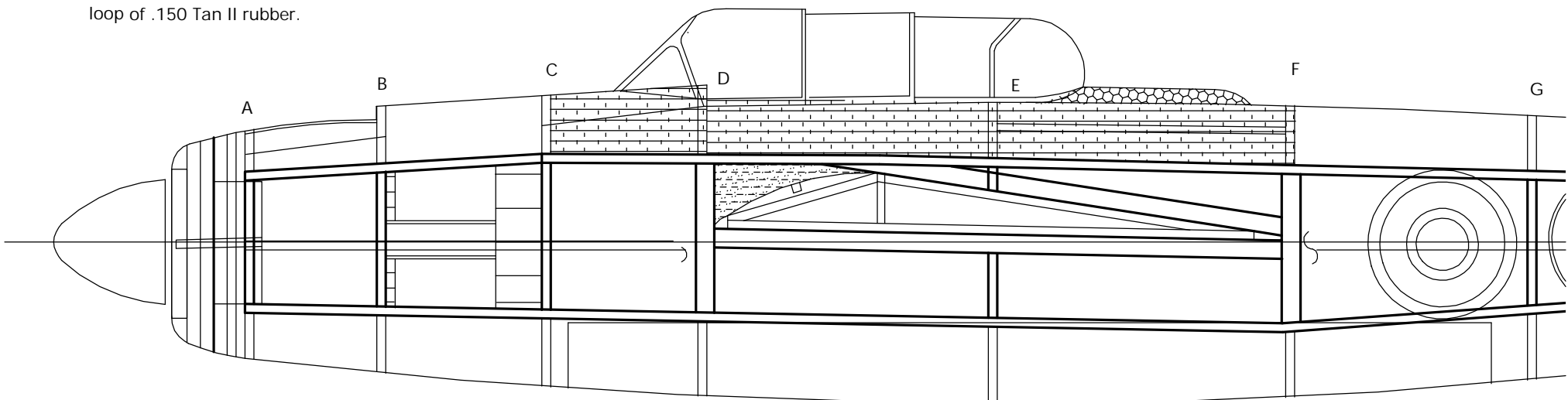


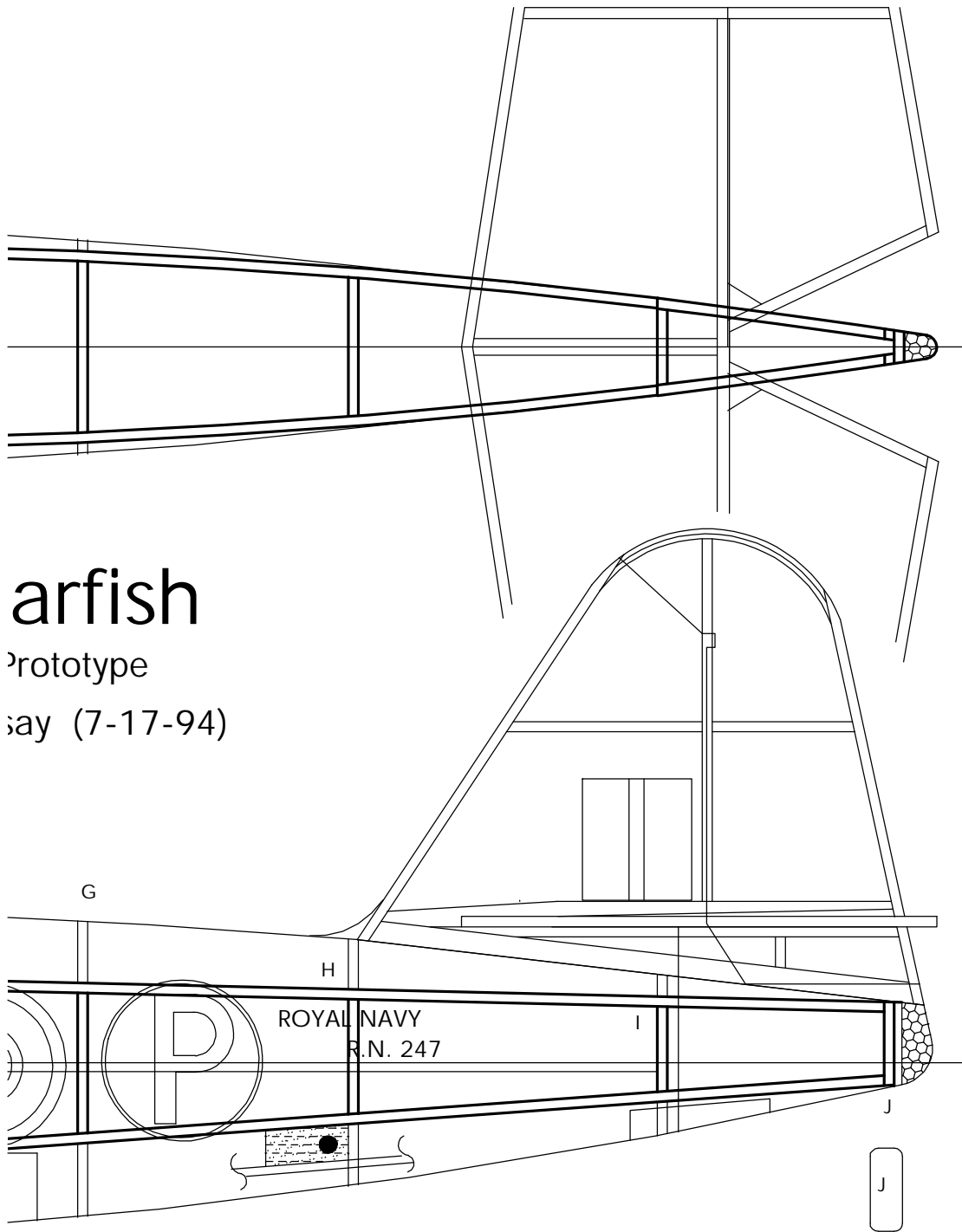
Fairey Spearfish

Post WWII Military Prototype

Drawn By: Dave Livesay (7-

Prototype model needed slight down and left thrust. 7 inch Peck plastic prop and a 24 inch loop of .150 Tan II rubber.

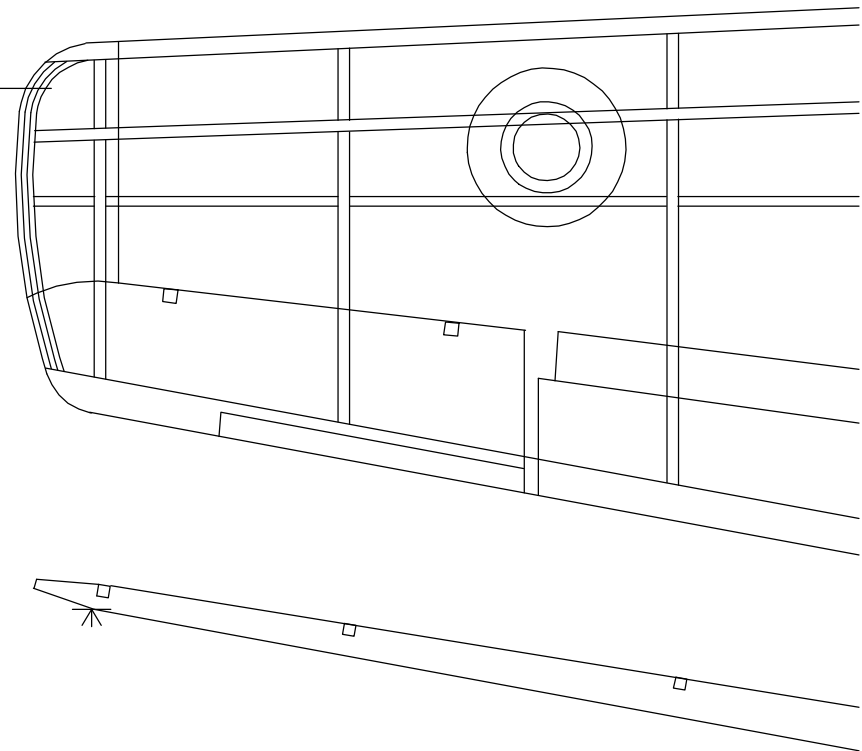
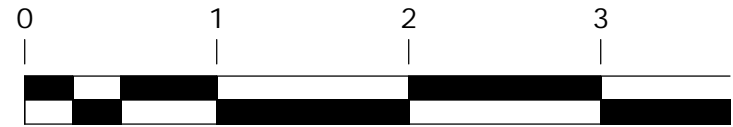




Spearfish

Prototype

May (7-17-94)

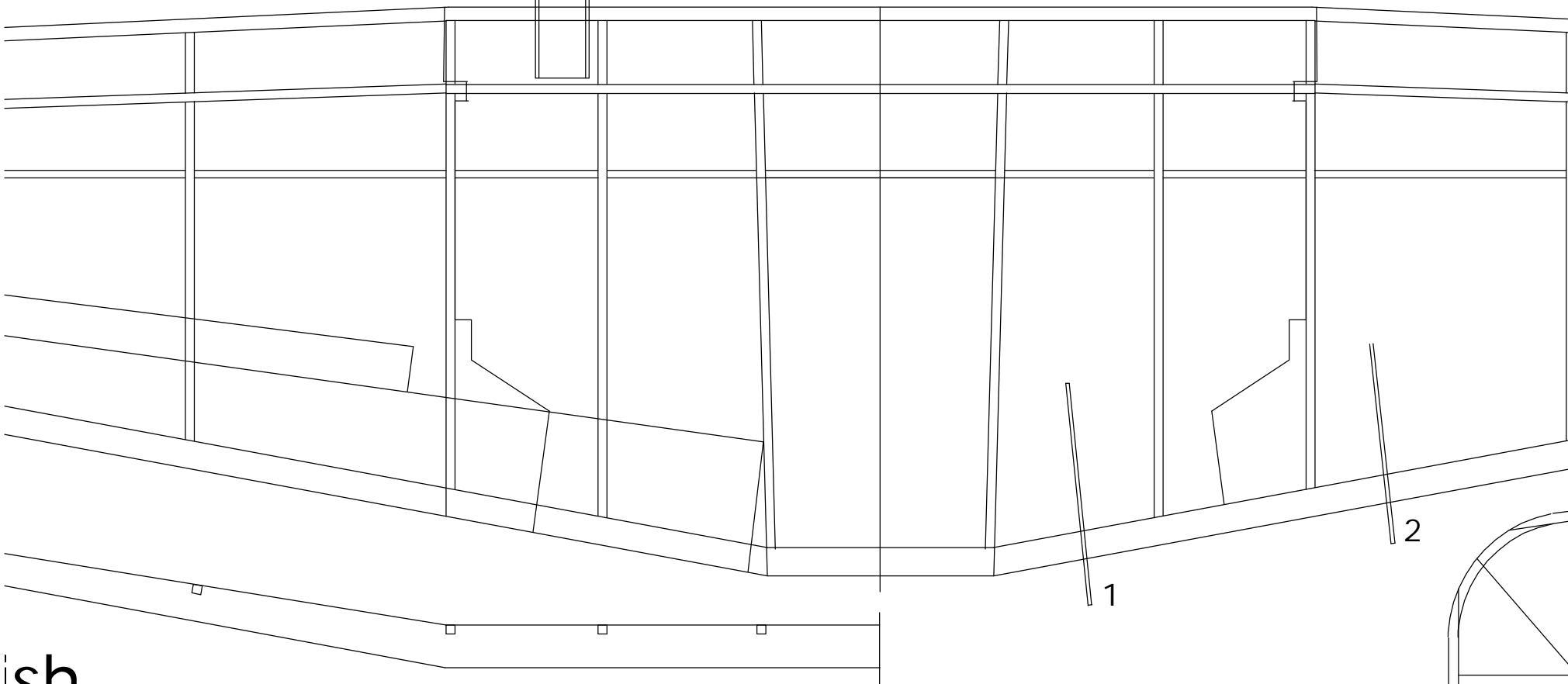
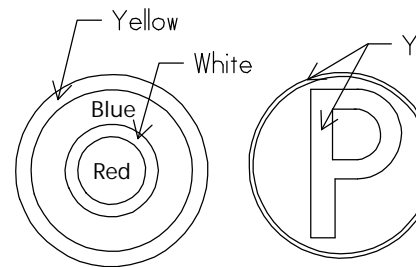
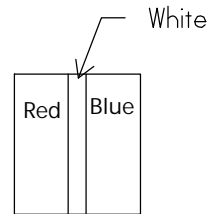
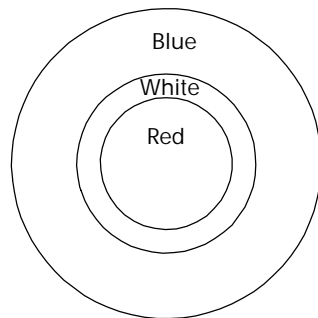
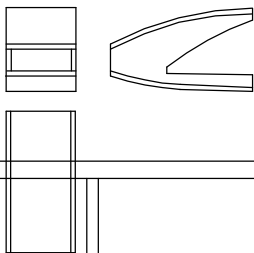


1.25"

Fairey Spearfish

Color

Overall Natural Aluminum
Markings as noted on Plan



ish

