

## Memorandum

ABS 046.01

Dated: July 7, 2007

To: Absecon Planning Board, Master Plan Committee

From: Robert L. Reid, AICP, PP, Board Planner

Re: **Proposed Ordinance to expand the SPB/PK District  
(Portion of R 2 District to be changed to SPB / PK District).**

### Introduction

In 1999 the Planning Board performed the re-examination of the 1993 Master Plan and expressed concern regarding the potential for increased enrollment into our school system and climbing real estate assessments to fund the rising costs. The recommendations to rezone existing residential districts to allow for the expansion of Pitney Park, the rezoning of Memorial Park to commercial and the aged restricted overlay zones all have helped to a small extent. Historically Absecon has sold land to offset future expenses. These lands eventually became single-family homes and generated school age children. Historically tax assessments on the single-family homes cannot offset the cost to educate each child. The sale of city owned land realizes only a short-term financial gain.

According to the Absecon City Construction Office, since the 1999 Master Plan review, approximately 338 new residential units have been built along with 6 commercial units. Of the new residential units, approximately 103 were single family homes, 93 were hotel units and 142 were condo apartments. In 2005 alone we have seen 43 additional hotel units on the White Horse Pike, 22 age restricted units at the Woodlands on Pitney Road, another 26 condo apartments at Oyster Bay and a number of single family dwellings on infill lots.

In addition to the above, three age restricted housing projects have received approvals. Stoneybrook – 269 units, Beazer Homes – 125 units and Absecon Seniors - 87 unit project on New Jersey Avenue at the former Marsh School site. This will result in approximately 481 additional units. This could translate into an approximate increase in population of over 1,000 new residents in the near future.

Of the approximately 7.25 square miles in Absecon only approximately 3.2 square miles of area is uplands with a population of over 7,600 residents (2000 Census 7,638). Of the 3.2 square miles of uplands, approximately 2 square miles of uplands (or approximately 63%) are zoned residential, approximately 0.86 square miles of uplands (or approximately 27%) are zoned commercial / industrial and approximately 0.31 square miles of uplands (or approximately 10% of the upland areas or approximately 4.3% of the total municipality) is zoned Park / School Public Buildings.

ORDINANCE NO. \_\_\_\_ OF 2007  
Ordinance to expand the SPB/PK District  
(Portion of R 2 District to be changed to SPB / PK District)

Robert L. Reid, AICP, PP

ABS 046.01

July 7, 2007

According to the Absecon Tax Office there are 3,030 residential units, which does not include the above additional 481 units. This is up from the approximate 2,800 residential units from the 1999 reexamination.

According to the New Jersey State Development and Redevelopment Plan, *"Nearly a million more people will call New Jersey home by the year 2020. And over 800,000 more people will work in the state by the year 2020."*

In 2004, the Mayor assembled the "Vacant Land Committee" which consisted of a group of municipal officials, which included City Council members, School Officials, Board of Education members, municipal and planning board professionals. The group met through April and May of 2004. Their charge was to examine vacant land in the city and to study the impact on the city and school system if the city property was to be sold. The concluding committee recommendations stated :*"Limiting the sale of the land will keep property values high. Limiting use of the land through zoning can limit potential increase in school enrollment."*

It's true that "they are not making any more land". The Master Plan recommends that remaining lands be banked for our future. The demand for housing in Absecon will increase while the supply will hold. Absecon is known for its great school system. The region knows about our dedicated civil minded volunteer organizations and our Dr. J. Pitney Recreation Park. This can only increase the value of each home in Absecon.

City owned vacant lands consist of approximately 104 acres **(or 2.2% of the total lands in Absecon)**. City owned vacant lands includes numerous undersize infill lots through-out Absecon. This area also includes larger contiguous parcels adjacent to Pitney Park and in the northwestern portion of Absecon in the R 2 Residential District.

It should be noted that of the 440 acres of City owned lands, **approximately 49% of the City owned lands are State regulated wetlands**. City Parks and Public Buildings represent approximately 27% of the City owned lands, while approximately 24% of City owned lands are still vacant **(or just over 2% of the total lands in Absecon)**.

The population in Absecon will continue to increase. It is the future of Absecon that must be addressed. We foresee a need for additional open space within the existing residential districts within reasonable walking and / or biking distances from the neighborhoods. The expansion of the bike path system, community pool and recreation center, skate board park, street hockey, outdoor basketball courts, etc. all can be accommodated in the future on lands that we set aside now.

**ORDINANCE NO. \_\_\_\_ OF 2007**  
**Ordinance to expand the SPB/PK District**  
**(Portion of R 2 District to be changed to SPB / PK District)**

Robert L. Reid, AICP, PP

ABS 046.01

July 7, 2007

The following proposed Ordinance to Expand the SPB/PK District is submitted for review and comment. This ordinance was composed based on discussions with the Planning Board Master Plan Committee members, Planning Board members at numerous meetings while preparing the 2005 Reexamination of the Master Plan. At those meetings we discussed components of the Reexamination Report and the proposed ordinance. This proposed ordinance is consistent with and the 2005 Reexamination Report. of the Master Plan.

Upon review and approval by the Planning Board the following proposed ordinance should be referred to City Council with findings that it is consistent with the Master Plan and recommend it be adopted.

NJSA 40:55D-26a states (in part) that Aprior to the adoption of a development regulation, or amendment thereto, the Planning Board shall make and transmit to the governing body, within 35 days after referral, a report including identifications of any provisions in the proposed development regulation, revision or amendment which are inconsistent with the Master Plan and recommendations concerning these inconsistencies and any other matters as the Board deems appropriate. Because this proposal originated at the Planning Board and the proposal is consistent with the Master Plan and this proposal is being referred to City Council with the statement that it is consistent with the Master Plan, the City Council does not need to refer it back to the Planning Board prior to final adoption.

ORDINANCE NO. \_\_\_\_ OF 2007  
Ordinance to expand the SPB/PK District  
(Portion of R 2 District to be changed to SPB / PK District)

Robert L. Reid, AICP, PP

ABS 046.01

July 7, 2007

ORDINANCE NO. \_\_\_\_ OF 2007

**AN ORDINANCE AMENDING ARTICLE II, §224-3 (A) OF THE CODE OF THE CITY OF ABSECON AND THE ZONING MAP OF THE CITY OF ABSECON WHICH INCORPORATES BY REFERENCE THE ABSECON CITY ZONING MAP TO EXPAND THE SCHOOL AND PUBLIC BUILDING (SPB) DISTRICT AND THE PARK (PK) DISTRICT.**

**WHEREAS**, the Absecon City Planning Board adopted a Master Plan Reexamination Report and Master Plan Update on May 23, 2006; and

**WHEREAS**, the Master Plan Reexamination Report and Master Plan Update recommended expanding the School and Public Building (SPB) District and the Park District (PK) into a portion of the R-2 Residential District.

**NOW THEREFORE, BE IT ORDAINED** by the Governing Body for the City of Absecon City, County of Atlantic and State of New Jersey, that Chapter 224, Absecon Developmental Ordinance and the Absecon City Zoning Map is hereby amended as follows:

**SECTION 1.**

The following properties are to be changed from R 2 District to SPB / PK.

Block 1.01, Lots 23, 24, 28.

Block 2, Lots 1.01, 1.02, 2.01, 2.02, 2.03, 2.04, 2.05, 2.06, 2.07, 3, 4, 12, 13, 13.01, 13.02, 13.03.

Block 5, Lots 20, 21, 22, 23.01, 23.02.

Block 6, Lots 1, 2.

Block 26, Lots 1, 2.01, 2.02, 3, 4, 5, 6, 7, 8, 9, 10, 11.

Block 27, Lot 1.

Block 28, Lots 1, 2.

Block 29.01, Lots 1, 2.

Block 62, Portion Lot 1.

Block 63, Lot 1.

**ORDINANCE NO. \_\_\_\_ OF 2007**  
**Ordinance to expand the SPB/PK District**  
**(Portion of R 2 District to be changed to SPB / PK District)**

Robert L. Reid, AICP, PP

ABS 046.01

July 7, 2007

Block 64, Lots 1, 2, 3, 4.

Block 71, Lots 2, 5, 7, 18.

Block 297, Lot 23

(See plan entitled "Absecon City Zoning Map", prepared by Robert L. Reid, AICP, PP, dated May 4, 2007 on file at the City Clerk's Office and Planning Board Office)

**SECTION 2.**

The existing privately owned single family homes and privately owned vacant parcels within the zone change area at the time of the adoption of this ordinance will retain their rights to develop their properties in accordance with permitted uses and bulk and area requirements of the existing R 2 District without the requirement to seek relief from the Zoning Board of Adjustment.

**SECTION 3.**

Any Ordinance or part thereof which is inconsistent with the provisions of the Ordinance is hereby repealed to the extent of such inconsistency.

**SECTION 4.**

This Ordinance will take effect upon final passage and publication as required by law.

**NOTICE IS HEREBY GIVEN** that the foregoing Ordinance was introduced and passed the first reading at a meeting of the City Council of the City of Absecon City, County of Atlantic and State of New Jersey, held on \_\_\_\_\_, and said Ordinance will be further considered for final passage and adoption at a public hearing to be held at the Municipal Complex located at 500 Mill Road, Absecon, New Jersey 08201, on \_\_\_\_\_, at 7:30 p.m. or as soon thereafter as the matter may be reached.

**BY ORDER OF THE MUNICIPAL COUNCIL OF THE CITY OF ABSECON**

Approved: \_\_\_\_\_  
Peter C. Elco, Mayor

Attest: \_\_\_\_\_  
Carie A. Crone, Acting Municipal Clerk

C:\Absecon Ordinances\2007 07 07 ABS 046 01 R2 to SPB PK.doc

## Memorandum

ABS 046.02

**DATE:** July 7, 2007

**TO:** ABSECON CITY PLANNING BOARD

**FROM:** Robert L. Reid, AICP, PP, Board Planner

**SUBJECT:** **Proposed Age-Restricted Overlay on the HD 1\* Highway Development District (\*AKA – HD Highway Development district in Article XIV)**

### Introduction

The HD-1 District is situated along US Route 30, bounded by the railroad, the City of Pleasantville boundary line and coastal wetlands with a 240 degree scenic vista of the adjoining open coastal wetlands and the Atlantic City skyline. The existing HD-1 Highway Development District area consists of a number of antiquated motels, a drive-in theater that has been closed for over 20 years, vacant land, and a bus parking lot. This area also includes a newly constructed Home Depot and Staples retail store. The previous owners of the Home Depot and Staples site tried for many years to develop a 100 unit hotel sites, without any success. Even with the hotel developer being able to qualify for a state liquor license to go along with a 100-room hotel there were no takers. The previous owner for years believed that with the zoning permitting building heights to elevation 70, close proximity to Atlantic City and view of the Atlantic City skyline, hotels as high as 6 stories would be developed. The hotel developers never materialized. Research of the Atlantic City hotel market did provide answers. Most of Atlantic City's casino patrons are still day-trippers. Casino Hotels such as the Borgata has increased overnight stays but not enough to justify more non-casino hotel development. Most of the overnight market is "comped" rooms for the high-rollers and other frequent patrons in the casino hotels. A non-casino hotel requires at least 65% occupancy to maintain its operation. The Sheraton Convention Hotel at the base of the Atlantic City Expressway just makes it to the 65% level of occupancy. Many other non-casino hotels just fall short of the needed minimum occupancy. Because of this there has been little non-casino hotel development has seen in adjoining Atlantic City and Absecon.

**ORDINANCE NO. \_\_\_\_ OF 2007**  
**AGE-RESTRICTED OVERLAY ORDINANCE OF ABSECON CITY**

Robert L. Reid, AICP, PP

ABS 046.02

July 7, 2007

Absecon City, like many other communities desire to reduce tax burden on the residents by increasing commercial rateables to help offset rising education costs. Commercial developers look for sustainable markets to feed the commercial establishments. Commercial developers always look for density. They count roof-tops within a close proximity of the commercial area. Without adequate densities commercial developers cannot finance their projects and will not attempt such an investment.

Absecon desires to generate economic growth locally to encourage more commercial development along the White Horse Pike corridor and Absecon's downtown main street, New Jersey Avenue. Permitting age-restricted housing will add much needed ratables without the burden of the education expenses, add more people to encourage more commercial growth and allow for the reuse and redevelopment of existing vacant lands, the under utilized and antiquated old motels and drive-in theater site.

The proposed Age-Restricted Overlay District is similar to the current Absecon Developmental Ordinance § 224-242B which permits age-restricted independent living facilities, assisted living facilities, medical facilities, adult day care, congregate senior residences, adult retirement communities and such accessory uses that are customary and incidental to the principal uses.

The proposed Age-Restricted Overlay ordinance includes applicable setback requirements and buffering requirements for adequate screening of residential uses from the White Horse Pike and permitted commercial uses in the HD Highway Development District (Absecon Developmental Ordinance § 224-83). The proposed ordinance includes building height as permitted by the Absecon Land Development Ordinance, § 224-84. A permitted building height up to six stories allows the residents to enjoy the open vista looking out over the coastal wetlands and bay towards the Atlantic City skyline.

ORDINANCE NO. \_\_\_\_ OF 2007  
AGE-RESTRICTED OVERLAY ORDINANCE OF ABSECON CITY

Robert L. Reid, AICP, PP

ABS 046.02

July 7, 2007

The following proposed Age-Restricted Citizen Housing Overlay District ordinance is offered for review and comment.

**ORDINANCE NO. \_\_\_\_\_ OF 2007**

**AN ORDINANCE AMENDING CHAPTER 224, ABSECON DEVELOPMENTAL  
ORDINANCE AND THE ZONING MAP CREATING  
- AGE-RESTRICTED HOUSING OVERLAY DISTRICT (ARTICLE XXXII)**

**WHEREAS**, the Absecon City Planning Board adopted a Master Plan Reexamination Report and Master Plan Update on May 23, 2006; and

**WHEREAS**, the Master Plan Reexamination Report and Master Plan Update recommended creating An Age-Restricted Housing Overlay District (Article XXXII) zoning overlay district in the HD 1\* Highway Development District (\*AKA – HD Highway Development district in Article XIV) along US Highway Route 30 southeast of Illinois Avenue.

**NOW THEREFORE, BE IT ORDAINED** by the Governing Body for the City of Absecon City, County of Atlantic and State of New Jersey, that Chapter 224, Absecon Developmental Ordinance and the Absecon City Zoning Map is hereby amended as follows:

**§ 224-252 Intent.**

- A. Intent. The intent of the Age-Restricted Housing Overlay District is to permit a residential community designed for active 55 year old and older individuals which contains independent living residential dwelling units, neighborhood commercial uses, nursing facilities, assisted living facilities, health spas, wellness centers, medical facilities, active and passive recreation open space, as well as a community center for social and cultural activities.
- B. Regulations in district. The use, height and area regulations of § 224-254 to § 224 - 255 inclusive, and those regulations set forth elsewhere in this chapter, where applicable to these sections, and the general regulations of Article XVIII are the regulations in the Age-Restricted Housing Overlay District .



ORDINANCE NO. \_\_\_\_ OF 2007  
AGE-RESTRICTED OVERLAY ORDINANCE OF ABSECON CITY

Robert L. Reid, AICP, PP

ABS 046.02

July 7, 2007

**§ 224-253 District Location**

The following properties in the HD-1 Highway Development District are included in the Age-Restricted Housing Overlay District age-restricted overlay district:

Block 224, Lots 1,2, 3, 4, 5, 6, 7, 8, 9, 10, 11, 12, 13, 14, 15, 16, 17, 18, 19, 20, 21,22, 23, 24, 25,26.

Block 225, Lot 1.

(See plan entitled "Absecon City Zoning Map", prepared by Robert L. Reid, AICP, PP, dated May 4, 2007 on file at the City Clerk's Office and Planning Board Office)

**§ 224-254 Permitted uses.**

Age-Restricted Housing Overlay District may include the following principal use:

- A. Age-restricted independent living dwelling units in multi-story multi-unit buildings as principal structures.
- B. Age-restricted independent living dwelling units in multi-story multi-unit buildings with attached ground level parking garages and commercial uses as one principal structure.
- C. Age-restricted independent living dwelling units in townhouse units.
- D. Accessory uses and buildings. Accessory uses and buildings shall be uses and buildings customarily incidental to the principal uses listed as permitted. They shall include but not be limited to:

Assisted Living Facilities; Nursing Facilities; Medical Facilities; Adult Day Care Facilities; Child daycare for the convenience of employees; Healthcare / Wellness Centers; Health Spas; Active Indoor & Outdoor Recreation; Open Space; restaurants, coffee shops, gift shops, barber shops, beauty salons, gatehouses, detached garages, carports, guardhouses and storage facilities for maintenance and equipment; recreational structures;

The Assisted Living and Nursing Facilities are permitted provided the residents can contract for a lifetime or lesser duration use of a unit and may receive healthcare, including but not limited to food services; housekeeping, maintenance, utilities and the use of recreational facilities. Healthcare / wellness facilities, food service and the use of recreational facilities may also be offered on a contract basis to nonresidents of the on-site facilities. Access to on-site commercial uses shall also be opened to the public.

ORDINANCE NO. \_\_\_\_ OF 2007  
AGE-RESTRICTED OVERLAY ORDINANCE OF ABSECON CITY

Robert L. Reid, AICP, PP

ABS 046.02

July 7, 2007

**§ 224-255 Bulk and Area Requirements.**

- |      |                              |   |
|------|------------------------------|---|
| A    | Minimum Lot Area:            | 2 Acres   |
| <br> |                              |   |
| B    | Maximum Impervious Coverage: | 80% with the inclusion of affordable housing;<br>60% without affordable housing   |
| <br> |                              |   |
| C    | Minimum Front Yard Setback:  | 50' with the inclusion of affordable housing;<br>75' without affordable housing   |
| <br> |                              |   |
| D    | Minimum Side Yard Setback:   | 35', (70' window wall to window wall) with the<br>inclusion of affordable housing;<br>50' (100' window wall to window wall) Side<br>Yard without affordable housing |
| <br> |                              |   |
| E    | Minimum Rear Yard Setback:   | 50', (60' window wall to window wall) with the<br>inclusion of affordable housing;<br>75' (80' window wall to window wall) Side Yard<br>without affordable housing. |
| <br> |                              |   |
| F    | Maximum Building Height:     | 65' or six (6) stories with the inclusion of<br>affordable housing;<br>55' (5) stories without affordable housing.  |

Setback Exceptions with the  
inclusion of affordable housing

**Setbacks adjoining railroad right of way exception** - Setbacks may be reduced by the Planning Board at the time of Site Plan review to a minimum of 35' provided the building is a minimum of 125' from the centerline of the existing railroad tracks.

**Setbacks adjoining State regulated wetlands exception** - Setbacks may be reduced to a minimum of 20' from the side or rear property line by the Planning Board at the time of Site Plan review provided the property line adjoins a property with State regulated wetlands with a minimum 50' buffer and as a result no other development can be proposed on the adjoining lot.

G Lot Width

200 ft min.

ORDINANCE NO. \_\_\_\_ OF 2007  
AGE-RESTRICTED OVERLAY ORDINANCE OF ABSECON CITY

Robert L. Reid, AICP, PP

ABS 046.02

July 7, 2007

- H. Buffer Strip is required along all side and rear lot lines that adjoin an existing use. The purpose of this buffer is to screen the view of automobiles and parking areas, reduce noise and the glare of the automobile headlights. The buffer strip adjoining parking areas shall be at least 25 ft. in width as measured from the property line and shall consist of any/or a combination of the following: existing trees and shrubs, and new landscaping. The preservation of natural vegetation as part of the buffer strip is encouraged. Additional plantings of trees and shrubs shall be required to insure an effective buffer. The buffer strip shall have sufficient materials to obscure any glare of automobile headlights year round. The maintenance of the buffer shall be the responsibility of the property owner. The Board may grant a reduction in the 25' wide buffer strip provided the applicant can demonstrate to the Board and the Board's landscape architect that the reduced buffer can adequately satisfy the purpose described above.
- I. Parking space perimeter setback: 25 ft. min. from property lines.
- J. Pedestrian circulation and vehicle circulation: subject to Planning Board review.
- K. Permitted density: The permitted by-right density shall not exceed twelve (12) dwelling units per acre without the inclusion of affordable housing. With the inclusion of affordable housing, there is no limit to permitted density for nursing facilities, assisted living facilities or independent living residential units. Independent living units are for 55 year old or older individuals only and shall not exceed three bedrooms per unit. The intensity of the site is controlled by the site coverage, setbacks and building height requirements of this section. The inclusion of one affordable housing unit for each eight market rate units shall be provided or the developer may make a contribution in lieu of the construction of the affordable housing units in accordance with the Absecon Affordable Housing Ordinance.
- L. Physical characteristics of buildings. A maximum length of 150 feet per freestanding building shall be permitted. A maximum building length may be extended by the Planning Board provided building façade includes offsets of at least 10' along with the inclusion of affordable housing.

ORDINANCE NO. \_\_\_\_ OF 2007  
AGE-RESTRICTED OVERLAY ORDINANCE OF ABSECON CITY

Robert L. Reid, AICP, PP

ABS 046.02

July 7, 2007

A maximum of three such 150 foot maximum length buildings may be attached, provided that an angle of at least 30 degrees exists between adjacent buildings. However, there can be no continuous roofline or continuous front, and/or rear building line of more than 80 linear feet. It is the purpose of this section to provide for both broken rooflines and different setbacks and to break up a straight linear configuration. Buildings connected by party or common walls shall not be considered separate buildings for the purposes of this section. Buildings connected by open walkways may be considered separate buildings for the purposes of Subsection N dealing with space between buildings.

- M. Bedroom content. The applicant shall furnish as part of the project submittal data indicating the proposed mix of bedrooms of structures included within the development. Independent living units shall not exceed three bedrooms.
- N. Space between buildings. No building shall be closer than 30 feet to any other building (windowless wall to windowless wall), 60' window wall to window wall.
- O. Floor area of independent living residential units. A studio-efficiency type unit shall contain not less than 600 square feet; one-bedroom design, shall contain not less than 700 square feet; a unit with two bedrooms shall contain not less than 850 square feet and a unit with three bedrooms shall contain not less than 1,100 square feet..
- P. Social and recreational facilities shall reflect, insofar as possible, preferences of the anticipated residents. Indoor facilities shall include hobby or craft facilities, lounging areas which may also be used for meetings and group activities, card rooms, lavatories and a swimming pool, or similar facilities. Outdoor facilities shall include walks, shuffleboard and horseshoe courts, or similar facilities.
- Q. The architectural design of all buildings and the site location and recreational facilities must be consistent with the ultimate purpose of achieving independent, self-reliant and pleasant living arrangements and shall take into account the desires and needs of active 55 year old and older persons for privacy, participating in social community activities and access to community activities. The architectural design as aforesaid shall be a matter of review by the Planning Board, and failure to comply or provide for the criteria as aforesaid without good and sufficient cause or without proposing acceptable alternatives may be a reason for denial. The use of natural materials, such as wood, brick or stone, is encouraged.

ORDINANCE NO. \_\_\_\_ OF 2007  
AGE-RESTRICTED OVERLAY ORDINANCE OF ABSECON CITY

Robert L. Reid, AICP, PP

ABS 046.02

July 7, 2007

- R. Laundry facilities, either located in individual units or in common areas, shall be provided for the use of residents.

**§ 224-256 Design Standards**

Design standards shall conform to Article XXII of the Absecon Developmental Ordinance (where applicable).

**§ 224-257 Landscaping and Buffers**

Landscaping shall conform to § 224-78 and § 224-129. Buffers shall conform to § 224-255H.

**§ 224-258 Parking**

Parking requirements-Guidelines offered for provided parking are as follows:

Minimum Spaces Recommended

Independent Living Unit:

Three bedroom	2/unit
Two bedroom	2/unit
One bedroom	1.3/unit
Efficiency or Studio	1/unit
Nursing Bed:	0.3/bed
Assisted Living Bed:	0.3/bed

ORDINANCE NO. \_\_\_\_ OF 2007  
AGE-RESTRICTED OVERLAY ORDINANCE OF ABSECON CITY

Robert L. Reid, AICP, PP

ABS 046.02

July 7, 2007

In addition to the parking requirements listed above, 0.5 parking space shall be provided for each employee in the peak shift.

The actual parking need shall be determined by the number of employees intended to occupy the facility and the number of residents anticipated to occupy the units at peak periods. It is the obligation of the applicant to demonstrate to the planning board the actual need for parking by the presentation of parking generation studies from authorities on the subject of parking generation. The parking generation study shall include all accessory uses proposed at the site in addition to the age-restricted independent living structure(s) as the principal use. The parking generation study shall include a time schedule matrix of anticipated activities, events in the principal use and the accessory uses that will share on-site parking. Publications by the Institute of Transportation Engineers (ITE) or the American Planners Association (APA) or other professional associations will be considered. If a parking generation study is not provided, the applicant must comply with the parking requirements in §224-128.

The Planning Board may consider permitting a 20% reduction in required parking, provided an area is reserved for expansion in the event the parking is determined to be necessary by the applicant or the Planning Board at a future date. If the additional parking is pre-engineered and reviewed by the Planning Board and the Planning Board's professionals at the time the original approval is granted, the additional parking can be constructed at the time the original approval is granted, or the additional parking can be constructed by the applicant at their discretion without returning to the Planning Board. The applicant must inform the Planning Board and the City Engineer in writing and post an inspection escrow prior to the actual construction of the parking area occurs.

The New Jersey Residential Site Improvement Standards (RSIS) parking requirements apply to all proposed residential uses. Parking generation can include a shared parking arrangement for accessory uses. In the case were the applicant demonstrates that a reduction in parking is warranted, the planning board will support an application to NJ DCA for a waiver from the parking RSIS parking requirements.

ORDINANCE NO. \_\_\_\_ OF 2007  
AGE-RESTRICTED OVERLAY ORDINANCE OF ABSECON CITY

Robert L. Reid, AICP, PP

ABS 046.02

July 7, 2007

**§ 224-259 Lighting.**

Lighting shall conform to § 224-130, which includes the requirement to design lighting to prevent glare upon surrounding properties.

**§ 224-260 Public Notice.**

Public Notice shall be required in accordance with NJSA 40:55D-12.

**§ 224-261 General Provisions.**

For general provisions refer to § 224-154.

**§ 224-262. INCONSISTENCY**

Any part of parts of any Ordinances which are found to be inconsistent with this Ordinance shall be deemed to have been repealed to the extent of such inconsistency.

**§ 224-263. EFFECTIVE DATE**

This Ordinance shall take effect upon passage and publication according to law and the filing of same with the County Planning Board in accordance with N.J.S.A. 40:55D

**ORDINANCE NO. \_\_\_\_ OF 2007  
AGE-RESTRICTED OVERLAY ORDINANCE OF ABSECON CITY**

Robert L. Reid, AICP, PP

ABS 046.02

July 7, 2007

**NOTICE IS HEREBY GIVEN** that the foregoing Ordinance was introduced and passed the first reading at a meeting of the City Council of the City of Absecon City, County of Atlantic and State of New Jersey, held on \_\_\_\_\_, and said Ordinance will be further considered for final passage and adoption at a public hearing to be held at the Municipal Complex located at 500 Mill Road, Absecon, New Jersey 08201, on \_\_\_\_\_, at 7:30 p.m. or as soon thereafter as the matter may be reached.

**BY ORDER OF THE MUNICIPAL COUNCIL OF THE CITY OF ABSECON**

Approved: \_\_\_\_\_  
Peter C. Elco, Mayor

Attest: \_\_\_\_\_  
Carie A. Crone, Acting Municipal Clerk

C:\Absecon Ordinances\2007 06 29 ABS04602.doc



## Memorandum

ABS 046.03

Dated: July 7, 2007

To: Absecon Planning Board, Master Plan Committee

From: Robert L. Reid, AICP, PP, Board Planner

Re: **Proposed Ordinance to change a portion of I / PI Industrial / Planned Industrial to R-2 District.**

### Introduction

The existing I / PI Industrial / Planned Industrial Area District west of Mill Road is bounded by the R 2 Residential District to the north, the Conservation District to the south and west and existing residential uses to the east across Mill road in the I / PI District. The area in question has no Industrial uses. The Zoning Board of Adjustment granted a use variance and subdivision approval to permit residential uses on Lot 21 in Block 192, which is a large portion of the area in question. A large portion of this area is state regulated freshwater wetlands.

The following proposed Ordinance to change a portion of the I / PI Industrial / Planned Industrial Area District to R 2 District is submitted for review and comment. This ordinance was composed based on discussions with the Planning Board Master Plan Committee members, Planning Board members at numerous meetings while preparing the 2005 Reexamination of the Master Plan. At those meetings we discussed components of the Reexamination Report and the proposed ordinance. This proposed ordinance is consistent with and the 2005 Reexamination Report. of the Master Plan.

Upon review and approval by the Planning Board the following proposed ordinance should be referred to City Council with findings that it is consistent with the Master Plan and recommend it be adopted.

NJSA 40:55D-26a states (in part) that Aprior to the adoption of a development regulation, or amendment thereto, the Planning Board shall make and transmit to the governing body, within 35 days after referral, a report including identifications of any provisions in the proposed development regulation, revision or amendment which are inconsistent with the Master Plan and recommendations concerning these inconsistencies and any other matters as the Board deems appropriate. Because this proposal originated at the Planning Board and the proposal is consistent with the Master Plan and this proposal is being referred to City Council with the statement that it is consistent with the Master Plan, the City Council does not need to refer it back to the Planning Board prior to final adoption.

ORDINANCE NO. \_\_\_\_ OF 2007  
**Ordinance to change a portion of I / PI Industrial / Planned Industrial to R-2 District.**

Robert L. Reid, AICP, PP

ABS 046.03

July 7, 2007

**ORDINANCE NO. \_\_\_\_ OF 2007**

**AN ORDINANCE AMENDING ARTICLE II, §224-3 (A) OF THE CODE OF THE CITY OF ABSECON AND THE ZONING MAP OF THE CITY OF ABSECON WHICH INCORPORATES BY REFERENCE THE ABSECON CITY ZONING MAP TO CHANGE A PORTION OF THE I / PI INDUSTRIAL / PLANNED INDUSTRIAL DISTRICT TO MODERATE DENSITY RESIDENTIAL (R 2) DISTRICT.**

**WHEREAS**, the Absecon City Planning Board adopted a Master Plan Reexamination Report and Master Plan Update on May 23, 2006; and

**WHEREAS**, the Master Plan Reexamination Report and Master Plan Update recommended changing a portion of the I / PI Industrial District to Moderate Density Residential (R 2) District.

**NOW THEREFORE, BE IT ORDAINED** by the Governing Body for the City of Absecon City, County of Atlantic and State of New Jersey, that Chapter 224, Absecon Developmental Ordinance and the Absecon City Zoning Map is hereby amended as follows:

**SECTION 1.**

The following properties in the I / PI District are included in expanded R 2 District:

Block 192, Lots 1.01, 1.02, 1.03, 2, 3, 15, 16, 17, 18, 19, 20, 21.

Block 195, Lots 1 through 28.

(See plan entitled "Absecon City Zoning Map", prepared by Robert L. Reid, AICP, PP, dated May 4, 2007 on file at the City Clerk's Office and Planning Board Office)

**SECTION 2.**

Any Ordinance or part thereof which is inconsistent with the provisions of the Ordinance is hereby repealed to the extent of such inconsistency.

**SECTION 3.**

This Ordinance will take effect upon final passage and publication as required by law.

ORDINANCE NO. \_\_\_\_ OF 2007  
**Ordinance to change a portion of I / PI Industrial / Planned Industrial to R-2 District.**

Robert L. Reid, AICP, PP

ABS 046.03

July 7, 2007

**NOTICE IS HEREBY GIVEN** that the foregoing Ordinance was introduced and passed the first reading at a meeting of the City Council of the City of Absecon City, County of Atlantic and State of New Jersey, held on \_\_\_\_\_, and said Ordinance will be further considered for final passage and adoption at a public hearing to be held at the Municipal Complex located at 500 Mill Road, Absecon, New Jersey 08201, on \_\_\_\_\_, at 7:30 p.m. or as soon thereafter as the matter may be reached.

**BY ORDER OF THE MUNICIPAL COUNCIL OF THE CITY OF ABSECON**

Approved: \_\_\_\_\_  
Peter C. Elco, Mayor

Attest: \_\_\_\_\_  
Carie A. Crone, Acting Municipal Clerk

C:\Absecon Ordinances\2007 07 07 ABS 046 03 IPI to R2.doc

## Memorandum

ABS 046.04

Dated: July 7, 2007

To: Absecon Planning Board, Master Plan Committee

From: Robert L. Reid, AICP, PP, Board Planner

Re: **Proposed Ordinance to change a portion of I / PI Industrial / Planned Industrial to R-1 District.**

### Introduction

The existing I / PI Industrial / Planned Industrial Area District east of Mill Road is bounded by the R 1 Residential District to the north and east, the Conservation District to the south and existing residential uses to the west across Mill Road in the I / PI District. The area in question has no Industrial uses. A large portion of this area is state regulated freshwater wetlands and coastal wetlands.

The following proposed Ordinance to change a portion of the I / PI Industrial / Planned Industrial Area District to R 1 District is submitted for review and comment. This ordinance was composed based on discussions with the Planning Board Master Plan Committee members, Planning Board members at numerous meetings while preparing the 2005 Reexamination of the Master Plan. At those meetings we discussed components of the Reexamination Report and the proposed ordinance. This proposed ordinance is consistent with and the 2005 Reexamination Report. of the Master Plan.

Upon review and approval by the Planning Board the following proposed ordinance should be referred to City Council with findings that it is consistent with the Master Plan and recommend it be adopted.

NJSA 40:55D-26a states (in part) that Aprior to the adoption of a development regulation, or amendment thereto, the Planning Board shall make and transmit to the governing body, within 35 days after referral, a report including identifications of any provisions in the proposed development regulation, revision or amendment which are inconsistent with the Master Plan and recommendations concerning these inconsistencies and any other matters as the Board deems appropriate. Because this proposal originated at the Planning Board and the proposal is consistent with the Master Plan and this proposal is being referred to City Council with the statement that it is consistent with the Master Plan, the City Council does not need to refer it back to the Planning Board prior to final adoption.

ORDINANCE NO. \_\_\_\_ OF 2007  
**Ordinance to change a portion of I / PI Industrial / Planned Industrial to R-1 District.**

Robert L. Reid, AICP, PP

ABS 046.04

July 7, 2007

**ORDINANCE NO. \_\_\_\_ OF 2007**

**AN ORDINANCE AMENDING ARTICLE II, §224-3 (A) OF THE CODE OF THE CITY OF ABSECON AND THE ZONING MAP OF THE CITY OF ABSECON WHICH INCORPORATES BY REFERENCE THE ABSECON CITY ZONING MAP TO CHANGE A PORTION OF THE I / PI INDUSTRIAL / PLANNED INDUSTRIAL DISTRICT TO LOW DENSITY RESIDENTIAL (R 1) DISTRICT.**

**WHEREAS**, the Absecon City Planning Board adopted a Master Plan Reexamination Report and Master Plan Update on May 23, 2006; and

**WHEREAS**, the Master Plan Reexamination Report and Master Plan Update recommended changing to portion of the I / PI Industrial / Planned Industrial to Low Density Residential (R 1) District.

**NOW THEREFORE, BE IT ORDAINED** by the Governing Body for the City of Absecon City, County of Atlantic and State of New Jersey, that Chapter 224, Absecon Developmental Ordinance and the Absecon City Zoning Map is hereby amended as follows:

**SECTION 1.**

The following properties in the I / PI District are included in expanded R 1 District:

Block 231, Lots 1.01, 1.02, 1.03, 2.

(See plan entitled "Absecon City Zoning Map", prepared by Robert L. Reid, AICP, PP, dated May 4, 2007 on file at the City Clerk's Office and Planning Board Office)

**SECTION 2.**

Any Ordinance or part thereof which is inconsistent with the provisions of the Ordinance is hereby repealed to the extent of such inconsistency.

ORDINANCE NO. \_\_\_\_ OF 2007  
**Ordinance to change a portion of I / PI Industrial / Planned Industrial to R-1 District.**

Robert L. Reid, AICP, PP

ABS 046.04

July 7, 2007

**SECTION 3.**

This Ordinance will take effect upon final passage and publication as required by law.

**NOTICE IS HEREBY GIVEN** that the foregoing Ordinance was introduced and passed the first reading at a meeting of the City Council of the City of Absecon City, County of Atlantic and State of New Jersey, held on \_\_\_\_\_, and said Ordinance will be further considered for final passage and adoption at a public hearing to be held at the Municipal Complex located at 500 Mill Road, Absecon, New Jersey 08201, on \_\_\_\_\_, at 7:30 p.m. or as soon thereafter as the matter may be reached.

**BY ORDER OF THE MUNICIPAL COUNCIL OF THE CITY OF ABSECON**

Approved: \_\_\_\_\_  
Peter C. Elco, Mayor

Attest: \_\_\_\_\_  
Carie A. Crone, Acting Municipal Clerk

C:\Absecon Ordinances\2007 07 07 ABS 046 04 IPI to R1.doc

## Memorandum

ABS 046.05

Dated: July 7, 2007

To: Absecon Planning Board, Master Plan Committee

From: Robert L. Reid, AICP, PP, Board Planner

Re: **Proposed Ordinance to change a portion of R-2 District to PK District.**

### Introduction

There are seven city owned parcels of land through-out the R 2 District that are maintained parks by the city or undevelopable wooded open space.

The following proposed Ordinance to change a portion of the R2 District to PK District is submitted for review and comment. This ordinance was composed based on discussions with the Planning Board Master Plan Committee members, Planning Board members at numerous meetings while preparing the 2005 Reexamination of the Master Plan. At those meetings we discussed components of the Reexamination Report and the proposed ordinance. This proposed ordinance is consistent with and the 2005 Reexamination Report. of the Master Plan.

Upon review and approval by the Planning Board the following proposed ordinance should be referred to City Council with findings that it is consistent with the Master Plan and recommend it be adopted.

NJSA 40:55D-26a states (in part) that Aprior to the adoption of a development regulation, or amendment thereto, the Planning Board shall make and transmit to the governing body, within 35 days after referral, a report including identifications of any provisions in the proposed development regulation, revision or amendment which are inconsistent with the Master Plan and recommendations concerning these inconsistencies and any other matters as the Board deems appropriate. Because this proposal originated at the Planning Board and the proposal is consistent with the Master Plan and this proposal is being referred to City Council with the statement that it is consistent with the Master Plan, the City Council does not need to refer it back to the Planning Board prior to final adoption.

ORDINANCE NO. \_\_\_\_ OF 2007  
**Ordinance to change a portion of R-2 District to PK District.**

Robert L. Reid, AICP, PP

ABS 046.05

July 7, 2007

**ORDINANCE NO. \_\_\_\_ OF 2007**

**AN ORDINANCE AMENDING ARTICLE II, §224-3 (A) OF THE CODE OF THE CITY OF ABSECON AND THE ZONING MAP OF THE CITY OF ABSECON WHICH INCORPORATES BY REFERENCE THE ABSECON CITY ZONING MAP TO CHANGE A PORTION OF THE MODERATE DENSITY RESIDENTIAL (R 2) DISTRICT TO PARK (PK) DISTRICT.**

**WHEREAS**, the Absecon City Planning Board adopted a Master Plan Reexamination Report and Master Plan Update on May 23, 2006; and

**WHEREAS**, the Master Plan Reexamination Report and Master Plan Update recommended changing a portion of the Moderate Density Residential (R 2) District to Park (PK) District.

**NOW THEREFORE, BE IT ORDAINED** by the Governing Body for the City of Absecon City, County of Atlantic and State of New Jersey, that Chapter 224, Absecon Developmental Ordinance and the Absecon City Zoning Map is hereby amended as follows:

**SECTION 1.**

The following properties are to be changed from R 2 District to PK District.

Block 1.01, Lots 25, 26, 27

Block 43, Lot 1.

Block 102, Lot 1.

Block 106, Lot 1.

Block 108, Lot 1.

Block 116, Lot 1.

Block 150, Lot 1.



ORDINANCE NO. \_\_\_\_ OF 2007  
**Ordinance to change a portion of R-2 District to PK District.**

Robert L. Reid, AICP, PP

ABS 046.05

July 7, 2007

(See plan entitled "Absecon City Zoning Map", prepared by Robert L. Reid, AICP, PP, dated May 4, 2007 on file at the City Clerk's Office and Planning Board Office)

**SECTION 2.**

Any Ordinance or part thereof which is inconsistent with the provisions of the Ordinance is hereby repealed to the extent of such inconsistency.

**SECTION 3.**

This Ordinance will take effect upon final passage and publication as required by law.

**NOTICE IS HEREBY GIVEN** that the foregoing Ordinance was introduced and passed the first reading at a meeting of the City Council of the City of Absecon City, County of Atlantic and State of New Jersey, held on \_\_\_\_\_, and said Ordinance will be further considered for final passage and adoption at a public hearing to be held at the Municipal Complex located at 500 Mill Road, Absecon, New Jersey 08201, on \_\_\_\_\_, at 7:30 p.m. or as soon thereafter as the matter may be reached.

**BY ORDER OF THE MUNICIPAL COUNCIL OF THE CITY OF ABSECON**

Approved: \_\_\_\_\_  
Peter C. Elco, Mayor

Attest: \_\_\_\_\_  
Carie A. Crone, Acting Municipal Clerk

C:\Absecon Ordinances\2007 07 07 ABS 046 05 R2 to PK.doc

## Memorandum

ABS 046.06

Dated: July 7, 2007

To: Absecon Planning Board, Master Plan Committee

From: Robert L. Reid, AICP, PP, Board Planner

Re: **Proposed Ordinance to change a portion of HC Highway Commercial to SPB District.**

### Introduction

A portion of the HC Highway Commercial District is bounded by the Absecon Fire Department property on two sides, which is situated in the SPB District and is separated from the HC Highway Commercial District by the White Horse Pike (State Highway Route 30) and New Road (State Highway Route 9). This property was for many years prior Al Zona's auto service station. Thus the current HC Highway Commercial District designation. After being purchased by the NJDOT for the widening of State Highway Route 30 the remaining unused portion was converted into a mini-park with plantings and benches. The city should consider changing the zone to allow the possible future expansion of the Fire House.

The following proposed Ordinance to change a portion of the HC Highway Commercial District to SPB District is submitted for review and comment. This ordinance was composed based on discussions with the Planning Board Master Plan Committee members, Planning Board members at numerous meetings while preparing the 2005 Reexamination of the Master Plan. At those meetings we discussed components of the Reexamination Report and the proposed ordinance. This proposed ordinance is consistent with and the 2005 Reexamination Report. of the Master Plan.

Upon review and approval by the Planning Board the following proposed ordinance should be referred to City Council with findings that it is consistent with the Master Plan and recommend it be adopted.

NJSA 40:55D-26a states (in part) that Aprior to the adoption of a development regulation, or amendment thereto, the Planning Board shall make and transmit to the governing body, within 35 days after referral, a report including identifications of any provisions in the proposed development regulation, revision or amendment which are inconsistent with the Master Plan and recommendations concerning these inconsistencies and any other matters as the Board deems appropriate. Because this proposal originated at the Planning Board and the proposal is consistent with the Master

ORDINANCE NO. \_\_\_\_ OF 2007  
**Ordinance to change a portion of HC Highway Commercial to SPB District.**

Robert L. Reid, AICP, PP

ABS 046.06

July 7, 2007

Plan and this proposal is being referred to City Council with the statement that it is consistent with the Master Plan, the City Council does not need to refer it back to the Planning Board prior to final adoption.

**ORDINANCE NO. \_\_\_\_ OF 2007**

**AN ORDINANCE AMENDING ARTICLE II, §224-3 (A) OF THE CODE OF THE CITY OF ABSECON AND THE ZONING MAP OF THE CITY OF ABSECON WHICH INCORPORATES BY REFERENCE THE ABSECON CITY ZONING MAP TO CHANGE A PORTION OF THE HIGHWAY COMMERCIAL (HC) DISTRICT TO SCHOOL AND PUBLIC BUILDINGS (SPB) DISTRICT.**

**WHEREAS**, the Absecon City Planning Board adopted a Master Plan Reexamination Report and Master Plan Update on May 23, 2006; and

**WHEREAS**, the Master Plan Reexamination Report and Master Plan Update recommended changing a portion of the Highway Commercial (HC) District to School and Public Building (SPB) District.

**NOW THEREFORE, BE IT ORDAINED** by the Governing Body for the City of Absecon City, County of Atlantic and State of New Jersey, that Chapter 224, Absecon Developmental Ordinance and the Absecon City Zoning Map is hereby amended as follows:

**SECTION 1.**

The following property in the HC District is included in the expanded SPB District:

Block 203, Lot 2.

(See plan entitled "Absecon City Zoning Map", prepared by Robert L. Reid, AICP, PP, dated May 4, 2007 on file at the City Clerk's Office and Planning Board Office)

**SECTION 2.**

Any Ordinance or part thereof which is inconsistent with the provisions of the Ordinance is hereby repealed to the extent of such inconsistency.

**SECTION 3.**

This Ordinance will take effect upon final passage and publication as required by law.

ORDINANCE NO. \_\_\_\_ OF 2007  
**Ordinance to change a portion of HC Highway Commercial to SPB District.**

Robert L. Reid, AICP, PP

ABS 046.06

July 7, 2007

**NOTICE IS HEREBY GIVEN** that the foregoing Ordinance was introduced and passed the first reading at a meeting of the City Council of the City of Absecon City, County of Atlantic and State of New Jersey, held on \_\_\_\_\_, and said Ordinance will be further considered for final passage and adoption at a public hearing to be held at the Municipal Complex located at 500 Mill Road, Absecon, New Jersey 08201, on \_\_\_\_\_, at 7:30 p.m. or as soon thereafter as the matter may be reached.

**BY ORDER OF THE MUNICIPAL COUNCIL OF THE CITY OF ABSECON**

Approved: \_\_\_\_\_  
Peter C. Elco, Mayor

Attest: \_\_\_\_\_  
Carie A. Crone, Acting Municipal Clerk

C:\Absecon Ordinances\2007 07 07 ABS 046 06 HC to SPB.doc

## Memorandum

ABS 046.07

Dated: July 7, 2007

To: Absecon Planning Board, Master Plan Committee

From: Robert L. Reid, AICP, PP, Board Planner

Re: **Proposed Ordinance to change a portion of R-2 District to SPB District.**

### Introduction

A vacant city owned parcel of land, which is Isolated and fronting on Pitney Road in the R 2 District adjoins the site of the Emma C. Attales School and H. Ashton Marsh School in the SPB District.

The following proposed Ordinance to change a portion of the R2 District to SPB District is submitted for review and comment. This ordinance was composed based on discussions with the Planning Board Master Plan Committee members, Planning Board members at numerous meetings while preparing the 2005 Reexamination of the Master Plan. At those meetings we discussed components of the Reexamination Report and the proposed ordinance. This proposed ordinance is consistent with and the 2005 Reexamination Report. of the Master Plan.

Upon review and approval by the Planning Board the following proposed ordinance should be referred to City Council with findings that it is consistent with the Master Plan and recommend it be adopted.

NJSA 40:55D-26a states (in part) that Aprior to the adoption of a development regulation, or amendment thereto, the Planning Board shall make and transmit to the governing body, within 35 days after referral, a report including identifications of any provisions in the proposed development regulation, revision or amendment which are inconsistent with the Master Plan and recommendations concerning these inconsistencies and any other matters as the Board deems appropriate. Because this proposal originated at the Planning Board and the proposal is consistent with the Master Plan and this proposal is being referred to City Council with the statement that it is consistent with the Master Plan, the City Council does not need to refer it back to the Planning Board prior to final adoption.

ORDINANCE NO. \_\_\_\_ OF 2007  
**Ordinance to change a portion of R-2 District to SPB District.**

Robert L. Reid, AICP, PP

ABS 046.07

July 7, 2007

**ORDINANCE NO. \_\_\_\_ OF 2007**

**AN ORDINANCE AMENDING ARTICLE II, §224-3 (A) OF THE CODE OF THE CITY OF ABSECON AND THE ZONING MAP OF THE CITY OF ABSECON WHICH INCORPORATES BY REFERENCE THE ABSECON CITY ZONING MAP TO CHANGE A PORTION OF THE MODERATE DENSITY RESIDENTIAL (R 2) DISTRICT TO SCHOOL AND PUBLIC BUILDING (SPB) DISTRICT.**

**WHEREAS**, the Absecon City Planning Board adopted a Master Plan Reexamination Report and Master Plan Update on May 23, 2006; and

**WHEREAS**, the Master Plan Reexamination Report and Master Plan Update recommended changing a portion of the Moderate Density Residential (R 2) District to School and Public Building (SPB) District.

**NOW THEREFORE, BE IT ORDAINED** by the Governing Body for the City of Absecon City, County of Atlantic and State of New Jersey, that Chapter 224, Absecon Developmental Ordinance and the Absecon City Zoning Map is hereby amended as follows:

**SECTION 1.**

The following property is to be changed from R 2 District to SPB District.

Block 73, Lot 1.

(See plan entitled "Absecon City Zoning Map", prepared by Robert L. Reid, AICP, PP, dated May 4, 2007 on file at the City Clerk's Office and Planning Board Office)

**SECTION 2.**

Any Ordinance or part thereof which is inconsistent with the provisions of the Ordinance is hereby repealed to the extent of such inconsistency.

**SECTION 3.**

This Ordinance will take effect upon final passage and publication as required by law.

ORDINANCE NO. \_\_\_\_ OF 2007  
**Ordinance to change a portion of R-2 District to SPB District.**

Robert L. Reid, AICP, PP

ABS 046.07

July 7, 2007

**NOTICE IS HEREBY GIVEN** that the foregoing Ordinance was introduced and passed the first reading at a meeting of the City Council of the City of Absecon City, County of Atlantic and State of New Jersey, held on \_\_\_\_\_, and said Ordinance will be further considered for final passage and adoption at a public hearing to be held at the Municipal Complex located at 500 Mill Road, Absecon, New Jersey 08201, on \_\_\_\_\_, at 7:30 p.m. or as soon thereafter as the matter may be reached.

**BY ORDER OF THE MUNICIPAL COUNCIL OF THE CITY OF ABSECON**

Approved: \_\_\_\_\_  
Peter C. Elco, Mayor

Attest: \_\_\_\_\_  
Carie A. Crone, Acting Municipal Clerk

C:\Absecon Ordinances\2007 07 07 ABS 046 07 R2 to SPB.doc

## Memorandum

ABS 046.08

Dated: July 7, 2007

To: Absecon Planning Board, Master Plan Committee

From: Robert L. Reid, AICP, PP, Board Planner

Re: **Proposed Ordinance to change a portion of SPB District to R2 District.**

### Introduction

A portion of the SPB District is surrounded by the R 2 District on three sides and is separated from the adjoining SPB District by Webb Road.

The following proposed Ordinance to change a portion of the SPB District to R2 District is submitted for review and comment. This ordinance was composed based on discussions with the Planning Board Master Plan Committee members, Planning Board members at numerous meetings while preparing the 2005 Reexamination of the Master Plan. At those meetings we discussed components of the Reexamination Report and the proposed ordinance. This proposed ordinance is consistent with and the 2005 Reexamination Report. of the Master Plan.

Upon review and approval by the Planning Board the following proposed ordinance should be referred to City Council with findings that it is consistent with the Master Plan and recommend it be adopted.

NJSA 40:55D-26a states (in part) that prior to the adoption of a development regulation, or amendment thereto, the Planning Board shall make and transmit to the governing body, within 35 days after referral, a report including identifications of any provisions in the proposed development regulation, revision or amendment which are inconsistent with the Master Plan and recommendations concerning these inconsistencies and any other matters as the Board deems appropriate. Because this proposal originated at the Planning Board and the proposal is consistent with the Master Plan and this proposal is being referred to City Council with the statement that it is consistent with the Master Plan, the City Council does not need to refer it back to the Planning Board prior to final adoption.



ORDINANCE NO. \_\_\_\_ OF 2007  
**Ordinance to change a portion of SPB District to R2 District.**

Robert L. Reid, AICP, PP

ABS 046.08

July 7, 2007

**ORDINANCE NO. \_\_\_\_ OF 2007**

**AN ORDINANCE AMENDING ARTICLE II, §224-3 (A) OF THE CODE OF THE CITY OF ABSECON AND THE ZONING MAP OF THE CITY OF ABSECON WHICH INCORPORATES BY REFERENCE THE ABSECON CITY ZONING MAP TO CHANGE A PORTION OF THE SCHOOL AND PUBLIC BUILDINGS (SPB) DISTRICT TO MODERATE DENSITY RESIDENTIAL (R 2) DISTRICT.**

**WHEREAS**, the Absecon City Planning Board adopted a Master Plan Reexamination Report and Master Plan Update on May 23, 2006; and

**WHEREAS**, the Master Plan Reexamination Report and Master Plan Update recommended changing a portion of the School and Public Building (SPB) District to Moderate Density Residential (R 2) District.

**NOW THEREFORE, BE IT ORDAINED** by the Governing Body for the City of Absecon City, County of Atlantic and State of New Jersey, that Chapter 224, Absecon Developmental Ordinance and the Absecon City Zoning Map is hereby amended as follows:

**SECTION 1.**

The following property is to be changed from SPB District to R 2 District.

Block 9.01, Lot 12.

(See plan entitled "Absecon City Zoning Map", prepared by Robert L. Reid, AICP, PP, dated May 4, 2007 on file at the City Clerk's Office and Planning Board Office)

**SECTION 2.**

Any Ordinance or part thereof which is inconsistent with the provisions of the Ordinance is hereby repealed to the extent of such inconsistency.

**SECTION 3.**

This Ordinance will take effect upon final passage and publication as required by law.

## Memorandum

ABS 046.08

Dated: July 7, 2007

To: Absecon Planning Board, Master Plan Committee

From: Robert L. Reid, AICP, PP, Board Planner

Re: **Proposed Ordinance to change a portion of SPB District to R2 District.**

### Introduction

A portion of the SPB District is surrounded by the R 2 District on three sides and is separated from the adjoining SPB District by Webb Road.

The following proposed Ordinance to change a portion of the SPB District to R2 District is submitted for review and comment. This ordinance was composed based on discussions with the Planning Board Master Plan Committee members, Planning Board members at numerous meetings while preparing the 2005 Reexamination of the Master Plan. At those meetings we discussed components of the Reexamination Report and the proposed ordinance. This proposed ordinance is consistent with and the 2005 Reexamination Report. of the Master Plan.

Upon review and approval by the Planning Board the following proposed ordinance should be referred to City Council with findings that it is consistent with the Master Plan and recommend it be adopted.

NJSA 40:55D-26a states (in part) that prior to the adoption of a development regulation, or amendment thereto, the Planning Board shall make and transmit to the governing body, within 35 days after referral, a report including identifications of any provisions in the proposed development regulation, revision or amendment which are inconsistent with the Master Plan and recommendations concerning these inconsistencies and any other matters as the Board deems appropriate. Because this proposal originated at the Planning Board and the proposal is consistent with the Master Plan and this proposal is being referred to City Council with the statement that it is consistent with the Master Plan, the City Council does not need to refer it back to the Planning Board prior to final adoption.

ORDINANCE NO. \_\_\_\_ OF 2007  
**Ordinance to change a portion of SPB District to R2 District.**

Robert L. Reid, AICP, PP

ABS 046.08

July 7, 2007

ORDINANCE NO. \_\_\_\_ OF 2007

**AN ORDINANCE AMENDING ARTICLE II, §224-3 (A) OF THE CODE OF THE CITY OF ABSECON AND THE ZONING MAP OF THE CITY OF ABSECON WHICH INCORPORATES BY REFERENCE THE ABSECON CITY ZONING MAP TO CHANGE A PORTION OF THE SCHOOL AND PUBLIC BUILDINGS (SPB) DISTRICT TO MODERATE DENSITY RESIDENTIAL (R 2) DISTRICT.**

**WHEREAS**, the Absecon City Planning Board adopted a Master Plan Reexamination Report and Master Plan Update on May 23, 2006; and

**WHEREAS**, the Master Plan Reexamination Report and Master Plan Update recommended changing a portion of the School and Public Building (SPB) District to Moderate Density Residential (R 2) District.

**NOW THEREFORE, BE IT ORDAINED** by the Governing Body for the City of Absecon City, County of Atlantic and State of New Jersey, that Chapter 224, Absecon Developmental Ordinance and the Absecon City Zoning Map is hereby amended as follows:

**SECTION 1.**

The following property is to be changed from SPB District to R 2 District.

Block 9.01, Lot 12.

(See plan entitled "Absecon City Zoning Map", prepared by Robert L. Reid, AICP, PP, dated May 4, 2007 on file at the City Clerk's Office and Planning Board Office)

**SECTION 2.**

Any Ordinance or part thereof which is inconsistent with the provisions of the Ordinance is hereby repealed to the extent of such inconsistency.

**SECTION 3.**

This Ordinance will take effect upon final passage and publication as required by law.

ORDINANCE NO. \_\_\_\_ OF 2007  
**Ordinance to change a portion of SPB District to R2 District.**

Robert L. Reid, AICP, PP

ABS 046.08

July 7, 2007

**NOTICE IS HEREBY GIVEN** that the foregoing Ordinance was introduced and passed the first reading at a meeting of the City Council of the City of Absecon City, County of Atlantic and State of New Jersey, held on \_\_\_\_\_, and said Ordinance will be further considered for final passage and adoption at a public hearing to be held at the Municipal Complex located at 500 Mill Road, Absecon, New Jersey 08201, on \_\_\_\_\_, at 7:30 p.m. or as soon thereafter as the matter may be reached.

**BY ORDER OF THE MUNICIPAL COUNCIL OF THE CITY OF ABSECON**

Approved: \_\_\_\_\_  
Peter C. Elco, Mayor

Attest: \_\_\_\_\_  
Carie A. Crone, Acting Municipal Clerk

2007 07 07 ABS 046 08 SPB to R2.doc

## **Memorandum**

ABS 046.09

**Dated:** July 7, 2007

**To:** Absecon Planning Board, Master Plan Committee

**From:** Robert L. Reid, AICP, PP, Board Planner

**Re:** **Proposed Absecon Train Station Area Overlay Ordinance**

### **Introduction**

Like many other urban and suburban business districts through the state, Absecon has suffered over the years from the fate of creeping deterioration as retail activity has become more concentrated in large regional shopping areas and the consequent loss of the economical vitality has made the center of a small town a less attractive for other commercial uses.

The loss of pedestrian traffic from city employees and the Marsh School staff due to the relocation of City Hall and the Marsh School has also had a major impact on our downtown Main Street and Central Business District. Our New Jersey Avenue Central Business District has slowly adapted to the change in the retail market. New Jersey Avenue has evolved into a place where we run more errands than actually do slow paced casual shopping.

The newly constructed six lane divided State Highway Route 30 has changed the character of downtown Absecon forever. Now, residents question how Absecon's downtown will survive in the future, especially in terms of competition brought on by large, regional discount stores.

Presently, Absecon's downtown consists of mostly service-oriented establishments, with only a small percentage of retail establishments along New Jersey Avenue.

A review of the existing conditions shows that the Absecon Station Area has a good potential for revitalization. Community facilities which draw people to the area are an asset, and residential neighborhoods that adjoin the area are sound. There is a need to attract more neighborhood and commuter service shopping facilities to the area in order to create more activity downtown.

Existing historic landmarks like the Pitney House, United Methodist Church, Absecon Presbyterian Church, Odd Fellows Hall and Absecon's Historical Society Museum Howlett Hall should be promoted to encourage a viable downtown.

We need to look for ways to attract more people to our "Main Street" New Jersey Avenue. We need to find ways to attract more retail establishments.

**ORDINANCE NO. \_\_\_\_\_ OF 2007  
ABSECON TRAIN STATION AREA OVERLAY**

**Robert L. Reid, AICP, PP**

**ABS 046.09**

**July 7, 2007**

With the addition of Home Depot and possibly another large discount retailer in Absecon's future, the city must look for vehicles to strengthen our Central Business District by attracting people to our "downtown". A pedestrian friendly enhanced streetscape with brick paved sidewalks and brick paved roadway to act as a traffic calming measure and additional parking should be encouraged.

Age Restricted housing now under construction on the former Marsh School site within walking distance of downtown will help strengthen our small town "downtown" and will add much needed pedestrian activity to downtown which will be a benefit to the community. The proposed development will encourage further investment on New Jersey Avenue which will in turn substantially improve the rent structure for our downtown Central Business District.

The following Absecon Train Station Area Overlay Ordinance is submitted for review and comment. This ordinance was composed based on discussions with the Planning Board Master Plan Committee members, Planning Board members at numerous meetings while preparing the 2005 Reexamination of the Master Plan. At those meetings we discussed components of the Reexamination Report and the Absecon Train Station Area Overlay Ordinance. This proposed ordinance is consistent with and the 2005 Reexamination Report. of the Master Plan.

Upon review and approval by the Planning Board the following Article should be referred to City Council with findings that it is consistent with the Master Plan and recommend it be adopted.

NJSA 40:55D-26a states (in part) that Aprior to the adoption of a development regulation, or amendment thereto, the Planning Board shall make and transmit to the governing body, within 35 days after referral, a report including identifications of any provisions in the proposed development regulation, revision or amendment which are inconsistent with the Master Plan and recommendations concerning these inconsistencies and any other matters as the Board deems appropriate. Because this proposal originated at the Planning Board and the proposal is consistent with the Master Plan and this proposal is being referred to City Council with the statement that it is consistent with the Master Plan, the City Council does not need to refer it back to the Planning Board prior to final adoption.

**ORDINANCE NO. \_\_\_\_\_ OF 2007  
ABSECON TRAIN STATION AREA OVERLAY**

**Robert L. Reid, AICP, PP**

**ABS 046.09**

**July 7, 2007**

**ORDINANCE NO. \_\_\_\_\_ OF 2007**

**AN ORDINANCE AMENDING CHAPTER 224, ABSECON DEVELOPMENTAL  
ORDINANCE AND THE ZONING MAP CREATING THE  
ABSECON TRAIN STATION AREA OVERLAY DISTRICT (ARTICLE XXXIII)**

**WHEREAS**, the Absecon City Planning Board adopted a Master Plan Reexamination Report and Master Plan Update on May 23, 2006; and

**WHEREAS**, the Master Plan Reexamination Report and Master Plan Update recommended creating a Absecon Train Station Area Overlay district in the Central Business Commercial ( C 1 ) District and the Highway Commercial ( H C ) District along US Highway Route 30 and New Jersey Avenue adjoining the Train Station.

**NOW THEREFORE, BE IT ORDAINED** by the Governing Body for the City of Absecon City, County of Atlantic and State of New Jersey, that Chapter 224, Absecon Developmental Ordinance and the Absecon City Zoning Map is hereby amended as follows:

**§ 224-264. SHORT**

This Ordinance shall be known and may be cited as: ABSECON TRAIN STATION AREA OVERLAY ORDINANCE

**§ 224-265. PURPOSE**

The purpose of the Absecon Train Station Area Overlay is to revitalize the area by developing mixed uses, which will add more pedestrian activity, increase trade in the Absecon Central Business District, to encourage pedestrian oriented uses to replace existing vehicle oriented uses, encourage pedestrian links, transit ridership and the development of housing to meet our constitutional obligation to provide for affordable housing. The development of Absecon Train Station Area is intended to create a stronger sense of community in the area, by using the Train Station as a focus; redevelop the old Downtown Central Business District; and connect the Absecon Train Station to New Jersey Avenue.

**ORDINANCE NO. \_\_\_\_\_ OF 2007  
ABSECON TRAIN STATION AREA OVERLAY**

**Robert L. Reid, AICP, PP**

**ABS 046.09**

**July 7, 2007**

**§ 224-266. GOALS**

The following are goals for the Absecon Train Station Area:

The primary goal of the Absecon Station Area Plan is to increase trade in the Absecon Central Business District, provide for affordable residential units and to restore Absecon's downtown image as a town center.

The strategy to achieve this goal has two main objectives:

- (1) to locate more potential customers in the area by adding apartments, retail shops and offices; and
- (2) to provide the types of retail and services, as well as the enhanced atmosphere, which will attract additional customers and increase the rent structure downtown.

These two objectives reinforce each other: a larger customer base will draw merchants to the area to provide neighborhood and commuter shopping services and will create the incentive to merchants to improve their stores and the streetscape; conversely, the larger the variety of services provided, and the more pleasant the surroundings, the more likely the area will attract shoppers.

Increase trade in the Central Business District;

Improve public safety by encouraging pedestrian friendly infrastructures;

Encourage the creation of a pedestrian-oriented downtown with a pedestrian bridge link from Absecon 's Main Street " New Jersey Avenue" to the Absecon Train Station platform;

Add affordable housing, commercial and office uses at increased densities within walking distance of the shopping and transit facilities to stimulate pedestrian activity, enliven the Central Business District, reduce auto trips and generate transit riders;

Encourage additional measures to reduce traffic congestion and meet clean air standards;

Encourage pedestrian activity by improving the quality of the pedestrian environment; and

Encourage commuter convenience and service facilities close to the Absecon Train Station.



**ORDINANCE NO. \_\_\_\_\_ OF 2007  
ABSECON TRAIN STATION AREA OVERLAY**

**Robert L. Reid, AICP, PP**

**ABS 046.09**

**July 7, 2007**

**§ 224-267. LOCATION OF THE TRAIN STATION AREA OVERLAY**

a. The Absecon Train Station Area encompasses an area within a reasonable walking distance the Absecon Train Station on both sides of State Highway Route 30. The boundaries of the area is the railroad right of way to the south, Shore Road to the east, Church Street to the north and School Street and Southwest Street to the west. The core of the Absecon Train Station Area is the 100 block of New Jersey Avenue. Existing community facilities include the Downtown Clock Plaza, Absecon Historical Society Museum "Howlett Hall", municipal parking lots, (one north of State Highway 30 and one south of State Highway 30). The Absecon Train Station Area also includes the recently approved Absecon Senior Project on the former Marsh School site. In Addition the Absecon Public Library and two historic places of worship are within the blocks adjoining the Absecon Train Station Area.

b. The Absecon Train Station Area is divided into two subsections:

- 1) a train station platform area for commuter business south of State Highway Route 30;
- 2) and the New Jersey Avenue area north of State Highway Route 30 for downtown neighborhood commercial uses.

c. The following parcels are included in the Absecon Train Station Area Overlay District:

Block 158, Lots 1.01, 1.02, 2, 3, 4, 5, 6, 7.

Block 159, Lots 1, 2, 3, 4, 5, 5.02.

Block 160, Lots 1.01, 1.02, 2, 3, 4, 5, 6, 7, 8, 9, 10, 11, 12, 13, 14, 15, 16, 17, 18, 19, 20, 21.

Block 161, Lots 1, 2, 3, 4, 5, 6, 7, 8, 9, 10, 11.

Block 213, Lots 1, 2, 3, 4, 5, 6, 7, 8, 9, 10, 11, 12, 13, 14, 15, 16.

Block 214, Lots 3, 4, 5, 6, 7, 8, 9, 10, 11, 12, 13, 14, 15, 16, 17..

Block 215, Lots 1.01, 1.02.

**ORDINANCE NO. \_\_\_\_\_ OF 2007  
ABSECON TRAIN STATION AREA OVERLAY**

**Robert L. Reid, AICP, PP**

**ABS 046.09**

**July 7, 2007**

Block 800, lots 3, 4

(See plan entitled "Absecon City Zoning Map", prepared by Robert L. Reid, AICP, PP, dated May 4, 2007 on file at the City Clerk's Office and Planning Board Office)

**§ 224-268. PERMITTED USES**

In order to further the purposes of the Absecon Train Station Area, only the uses set forth in the following sections are permitted. A mix of a minimum of 65% residential and maximum of 35% commercial is required as described in Sections 224-268A and 224-268B.

The permitted uses below are also permitted on lands currently owned by NJ Transit, its successors and assigns. The developer is encouraged to include the NJ Transit property in the proposed development. The City may assist with coordination with the NJ Transit and the developer to possibly enter into a joint-venture to construct a shared parking garage, pedestrian access walks and bridges, commercial uses at the platform level and residential units above.

**A. Permitted Principal Commercial Uses**

The following commercial uses are permitted provided commercial uses do not exceed 35% of the gross floor area of the proposed development not including the floor area for enclosed parking garage providing parking for the development.

- a. Commuter parking facilities and passenger drop-off and pick-up areas;
- b. Retail sales and other uses generating pedestrian activity, serving neighborhood residential and commuters, but excluding sale of building materials, plumbing supplies, motor vehicles, boats or swimming pools, large appliances;
- c. Personal and household services and business services; but excluding vehicle maintenance, repair, auto body, gas stations and similar uses;
- d. Restaurants and similar establishments selling food and / or beverages, but excluding drive-through windows;
- e. Day care centers, including nursery schools;
- f. Public buildings such as municipal offices, police station, library, post office, museum, and similar uses that directly serve the public, but excluding facilities such as public works garage, water treatment plant, electric transformer station, and uses of similar nature;
- g. Banks and savings and loan institutions, but excluding drive-through windows;
- h. Public Parks;

**ORDINANCE NO. \_\_\_\_\_ OF 2007  
ABSECON TRAIN STATION AREA OVERLAY**

**Robert L. Reid, AICP, PP**

**ABS 046.09**

**July 7, 2007**

- i. Train Stations;
- j. General Business Offices, Offices for professionals such as architects, attorneys, doctors, engineers, planners and landscape architects.

**B. Permitted Residential Uses**

The following residential uses are permitted provided residential uses represent a minimum of 65% of the gross floor area of the proposed development, excluding parking garage area.

a. Residential units in apartment buildings for rent or for sale as condominium units above commercial uses on ground floor and / or enclosed parking garages. The permitted by-right density shall not exceed six (6) dwelling units per acre without the inclusion of affordable housing. The permitted density is unlimited with the inclusion of 25% affordable housing units as described in §224-194 as replaced by Ordinance No. \_\_\_\_\_ of 2007. With affordable housing, the density, size, location and number of dwelling units to be determined by market conditions, New Jersey Uniform Construction Code (NJUCC) requirements and the development's conformity with use mix set forth in Section 224-268 and the bulk requirements set forth with Section 224-269.

The existing uses within the proposed Absecon Train Station Area Overlay at the time of the adoption of this ordinance will retain their rights to develop / expand their facilities in accordance with the permitted uses and bulk area requirements of the existing underlying zoning districts without seeking relief of the Zoning Board of Adjustment.

**ORDINANCE NO. \_\_\_\_\_ OF 2007**  
**ABSECON TRAIN STATION AREA OVERLAY**

**Robert L. Reid, AICP, PP**

**ABS 046.09**

**July 7, 2007**

**§224-269. AREA, YARD AND BULK REQUIREMENTS.**

- |    |  |  |
|----|--|--|
| A. | Minimum Lot Size:  | 7,500 sq. ft.  |
| B  | Minimum Lot Width:   | 75'  |
| C  | Maximum Building Coverage:   | 65% with the inclusion of affordable housing, 50% without affordable housing.  |
| D. | Maximum Impervious Coverage:   | 80% with the inclusion of affordable housing; 60% without affordable housing   |
| E  | Minimum Front Yard Setback:  |  |
| 1  | Open porches, open balconies, open pedestrian walkways (covered or uncovered)  | 0 feet.  |
| 2  | Building face:   | 8 feet   |
| F  | Minimum Side and Rear Yard Setback:  |  |
| 1  | Open porches, open balconies, open pedestrian walkways (covered or uncovered):   | 3 feet.  |
| 2  | Building face:   | 10 feet  |
| 3  | Between Structures on adjoining lots: (including open porches, open balconies, open pedestrian walkways, covered or uncovered) | 10 feet  |
| G  | Maximum Building Height:   |  |
| 1  | New Jersey Avenue Area:  | Two (2) stories or 28 feet maximum with commercial units at the ground level, offices and or residential units at the second level without the inclusion of affordable housing units;<br><br>Three (3) stories or 35 feet maximum with commercial units at the ground level, offices and or residential units at the second level and residential units at the third level with the inclusion of affordable housing units.   |
| 2  | Train Station Platform Area:   | Three (3) stories or 35 feet maximum with ground level commercial units, Train Station platform level (or second level) commercial units and residential units at the third level without the inclusion of affordable housing units;<br><br>Four (4) stories or 45 feet maximum with ground level commercial units, Train Station platform level (or second level) commercial units and residential units at the third and fourth levels with the inclusion of affordable housing units. |
| 3  | Train Station Platform Area with ground level enclosed parking:  | Four (4) stories or 45 feet maximum with ground level enclosed parking, commercial units at the Train Station  |

**ORDINANCE NO. \_\_\_\_\_ OF 2007  
ABSECON TRAIN STATION AREA OVERLAY**

**Robert L. Reid, AICP, PP**

**ABS 046.09**

**July 7, 2007**

Platform Level and residential units at the third and fourth levels without the inclusion of affordable housing units.

Five (5) stories or 55 feet maximum with ground level enclosed parking, commercial units at the Train Station Platform Level and residential units at the third, fourth and fifth levels with the inclusion of affordable housing units;

- 4 For buildings over two stories in height (28' maximum) the top floor shall be a gable roof design with gable roof dormers with windows.
- 5 The minimum slope of the gable roof shall be 6" in height for every 12" of width.
- 6 Roof height shall be measured from the average finish grade around the building to the mean height of the highest gable roof.
- 7 Variable roof heights are required. A minimum 30% of the building must be below the maximum building height.

**§224-270. DESIGN STANDARDS**

A. Within the Train station platform area, incentives should be provided to attract commuter-serving retail and service stores at the train station platform level with apartments conveniently located above the commercial units.

B. Site and building design and layout will encourage residences, commuters, visitors and other travelers to use the Absecon Train Station with the help of a visible point of identity;

C. Site and building design and layout shall provide for easy access to the transportation; continuous and safe sidewalks and pathways that make pedestrian access easy; bike paths and storage location that encourage bicycle access; safe and comfortable places to wait and meet others;

D. Overall site and building design shall include an environment that is active, human scaled, and visually safe, well lit, attractive areas for parking, drop-off and pick-up; and a sense of safety, security and predictability.

E. In the New Jersey Avenue area, improvements to existing storefronts shall be required as part of any second floor expansion to include apartments or offices above the commercial units at street level.

F. Architectural Requirements:

ORDINANCE NO. \_\_\_\_\_ OF 2007  
ABSECON TRAIN STATION AREA OVERLAY

Robert L. Reid, AICP, PP

ABS 046.09

July 7, 2007

1. The traditional / historical character of Absecon shall be maintained. An example would be the early 20<sup>th</sup> century train station or the Absecon Manor at the corner of Ohio Avenue and Station Avenue. **See Exhibit 224-270-F 1 and Exhibit 224-270 –F 2** on file with the City Clerk's Office.
2. Natural wood siding, (common 2 2/3" height) brick, stone or similar or compatible building materials shall be utilized.
3. Traditional late 19<sup>th</sup> century to early 20<sup>th</sup> century architectural design is encouraged for mixed residential / commercial uses new construction. Examples of architectural styles that are encouraged include Georgian, Federal, Creek Revival, and Victorian. **(See attached Appendix 1a-d.)**
4. All new construction, additions, alterations, and/or renovations to structures shall be compatible to the architectural design of the existing structures on-site and on surrounding property.

G. In addition to above standards Design standards shall conform to 224-77 (where applicable).

#### §224-271 LANDSCAPING AND BUFFERS

Landscaping and buffers shall conform to 224-71, 224-129 and 224-159 (where applicable).

#### §224-272 PARKING

Parking requirements: The actual parking need shall be determined by the number of employees intended to occupy the facility and the number of residents anticipated to occupy the Units at peak periods. It is the obligation of the applicant to demonstrate to the Board actual need for parking by the presentation of parking generation studies from authorities on the subject of parking generation. The parking generation study shall include all commercial and residential units proposed at the site and what percentage will use public transportation. The parking generation study shall include a time schedule matrix of uses that will share on-site parking. Publications by the Institute of Transportation Engineers (ITE) or the American Planners Association (APA) or other professional associations will be considered. If a parking generation study is not provided, the parking requirements in §224-128 will prevail.

The planning board may consider permitting up to a 30% reduction in required parking for a mix use commercial / residential development with affordable housing units proposed in the Train Station Platform Area within the Absecon Train Station Area Overlay provided the

**ORDINANCE NO. \_\_\_\_\_ OF 2007  
ABSECON TRAIN STATION AREA OVERLAY**

**Robert L. Reid, AICP, PP**

**ABS 046.09**

**July 7, 2007**

applicant can demonstrate with a parking generation study that patrons and residents will utilize the public transportation.

The planning board may consider permitting a 20% reduction in required parking provided an area is reserved for expansion in the event the parking is determined to be necessary by the planning board or by the applicant at a future date. If the additional parking is pre-engineered and reviewed by the planning board and planning board's professionals at the time of the original approval is granted, the additional parking can be constructed without returning to the planning board provided the additional parking is completed within five years of the original approval being granted. The construction of the additional parking is permitted provided the applicant informs the City Engineer in writing and posts an inspection escrow prior to actual construction taking place.

The New Jersey Residential Site Improvement Standards (RSIS) parking requirements apply to all proposed residential uses. Parking generation can include a shared parking arrangement for accessory uses. In the case were the applicant demonstrates that a reduction in parking is warranted, the planning board will support an application to NJ DCA for a waiver from the parking RSIS parking requirements.

**§224-273 LIGHTING**

Lighting shall conform to 224-80 and 224-130, which includes the requirement to design lighting to prevent glare upon surrounding properties.

**§224-274 PUBLIC NOTICE**

Public Notice shall be required in accordance with NJSA 40:55D-12.

**§224-275 CONSISTENCY**

Any Ordinance or part thereof which is inconsistent with the provisions of the Ordinance is hereby repealed to the extent of such inconsistency.

**§224-276 EFFECTIVE DATE**

This Ordinance will take effect upon final passage and publication as required by law.

ORDINANCE NO. \_\_\_\_\_ OF 2007  
ABSECON TRAIN STATION AREA OVERLAY

Robert L. Reid, AICP, PP

ABS 046.09

July 7, 2007

**NOTICE IS HEREBY GIVEN** that the foregoing Ordinance was introduced and passed the first reading at a meeting of the City Council of the City of Absecon City, County of Atlantic and State of New Jersey, held on \_\_\_\_\_, and said Ordinance will be further considered for final passage and adoption at a public hearing to be held at the Municipal Complex located at 500 Mill Road, Absecon, New Jersey 08201, on \_\_\_\_\_, at 7:30 p.m. or as soon thereafter as the matter may be reached.

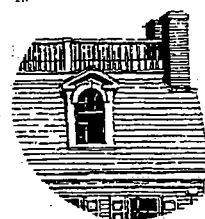
**BY ORDER OF THE MUNICIPAL COUNCIL OF THE CITY OF ABSECON**

Approved: \_\_\_\_\_  
Peter C. Elco, Mayor

Attest: \_\_\_\_\_  
Carie A. Crone, Acting Municipal Clerk

C:\Absecon Ordinances\2007 07 07 ABS 046 09 ABSECON TRAIN STATION AREA ORD.doc





## GEORGIAN

1730 to 1790

### Typical Characteristics

- Balanced facade; imposing doorway with pilasters and cornice or pediment.
- Doors panelled with lights in top or in transom above.
- Door sidelights located outside pilaster.
- Large sash windows with small panes. (18 to 24)
- Ridge roof may have flat deck with balustrade.
- High foundation

### Late Georgian:

- Balanced facade; doorways flanked by pilasters or engaged columns, doorways with sidelights inside pilasters.
- Fanlight over both door and sidelights.
- Doorway may be surmounted by Palladian window.
- House may have central projecting pavilion with pedimented gable.
- House may have pilasters full height of facade.
- Roof balustrade may be Chinese lattice. (very late)
- Roof may have cupola.
- Semi-circular dormers occasionally.
- House may have quoins at corners of brick or rusticated wood.

**RLR****AICP****Robert L. Reid, AICP, P.P.****Professional Planner**

366 Upland Avenue, Absecon NJ 08201 609-652-3049

JOB NO.

ABS 046.09

SHEET

2 OF 4

DATE

PROJECT

**Absecon Train Station Area Overlay Ordinance**

BY

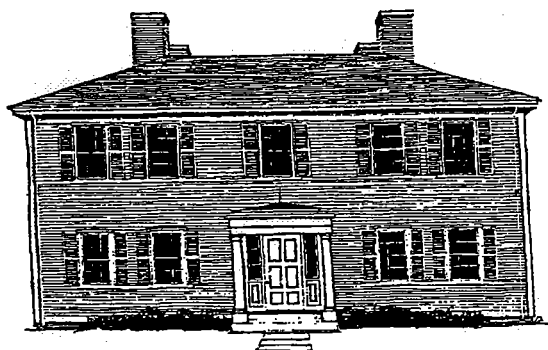
RLR

1/13/2007

SUBJECT

**Appendix 1 b - Federal Architectural Style**

CHK'D

**FEDERAL**

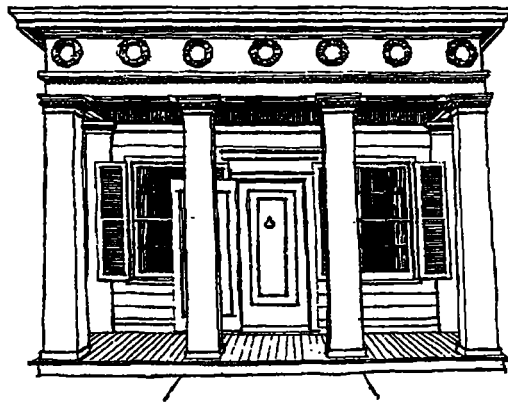
1790 to 1830

Typical Characteristics

- Quiet, dignified design with delicate decoration, geometric motifs.
- Windows and doors centered and balanced. Openings equal on each side of a center line.
- Large portico, narrow sidelights, with wide elliptical fanlight.
- Low pitched roof.
- Balustrade or parapet located above eaves.

Late Federal

- Influence of Adams Brothers in detail; carved motifs of Adam design used.
- Eagle and other signs of the new republic used in details.

**GREEK REVIVAL** 1820 to 1860Typical Characteristics

- Portico with single or two-story Greek classical columns or heavy square pillars, or fully pedimented gable.
- Doors with sidelights covered by transom, all framed by flat pilasters and architrave.
- Pilastered corners with roof cornice returned to complete order.
- Triglyphs, dentils and modillions in cornice work.



**RLR****AICP****Robert L. Reid, AICP, P.P.****Professional Planner**

366 Upland Avenue, Absecon NJ 08201 609-652-3049

JOB NO.

ABS 046.09

SHEET

4 OF 4

DATE

PROJECT

**Absecon Train Station Area Overlay Ordinance**

BY

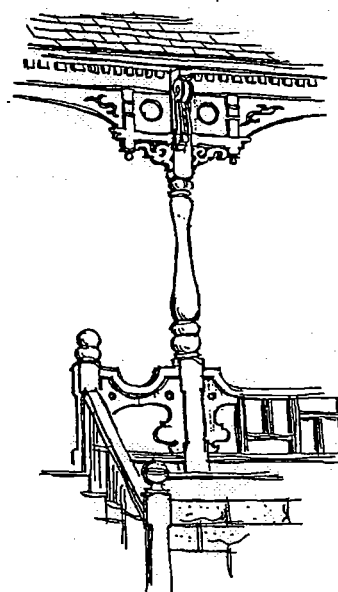
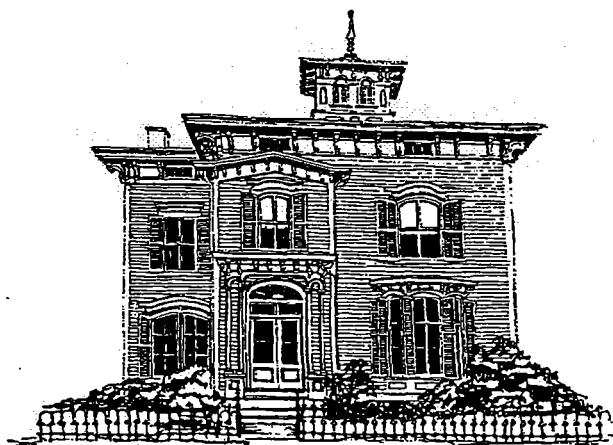
RLR

1/13/2007

SUBJECT

**Appendix 1 d - Victorian Architectural Style**

CHK'D

**VICTORIAN**

1845 to 1880

Typical Characteristics

- Gothic forms in design, pointed arches, etc.
- Square forms, towers, etc.
- Italian design added, French, Tudor and also Oriental.
- Contains porches, annexes, niches, pinnacles, railings, shutters, verandas, stained glass, etc.
- Arched windows.

Late Victorian

- Mansard roofs.
- Eave bargeboards in "frilly" designs.
- Fret work or "Gingerbread" used extensively.
- Wood shingles used.
- Finials
- Balustrades
- Bay windows
- Brackets

**RLR**  
**AICP**

**Robert L. Reid, AICP, P.P.**

*Professional Planner*

[www.abseconplanner.com](http://www.abseconplanner.com)

366 Upland Avenue, Absecon NJ 08201 609-652-3049

JOB NO.

ABS 0046.09

SHEET

1 OF 2

DATE

PROJECT

**Absecon Train Station Area Overlay Ordinance**

BY

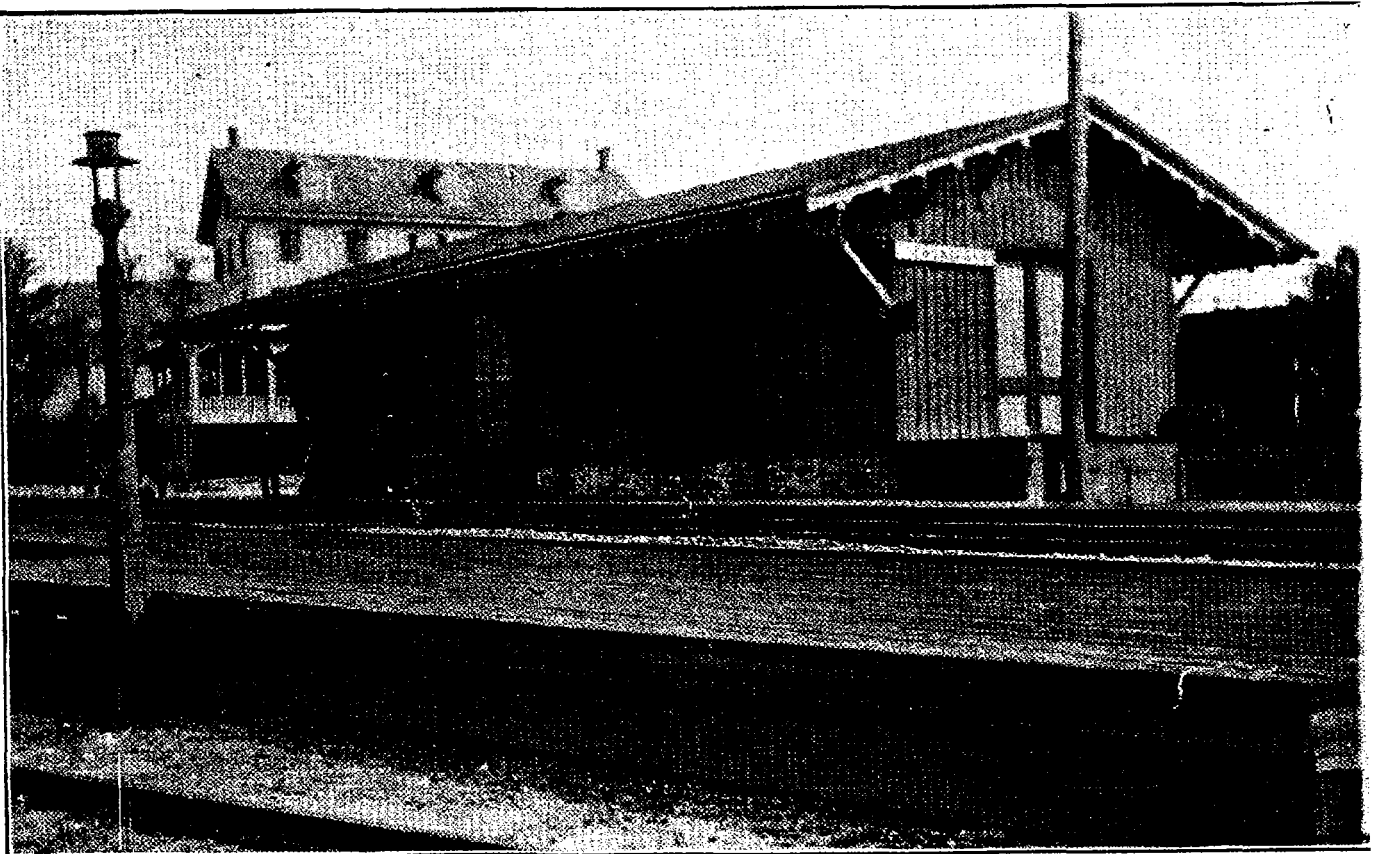
RLR

1/13/2007

SUBJECT

**Exhibit 224-270 - F1 Photograph of Train Station**

CHK'D



**RLR****AICP****Robert L. Reid, AICP, P.P.****Professional Planner**[www.abseconplanner.com](http://www.abseconplanner.com)

366 Upland Avenue, Absecon NJ 08201 609-652-3049

JOB NO.

ABS 046.09

SHEET

2 OF 2

DATE

PROJECT

**Absecon Train Station Area Overlay Ordinance**

BY

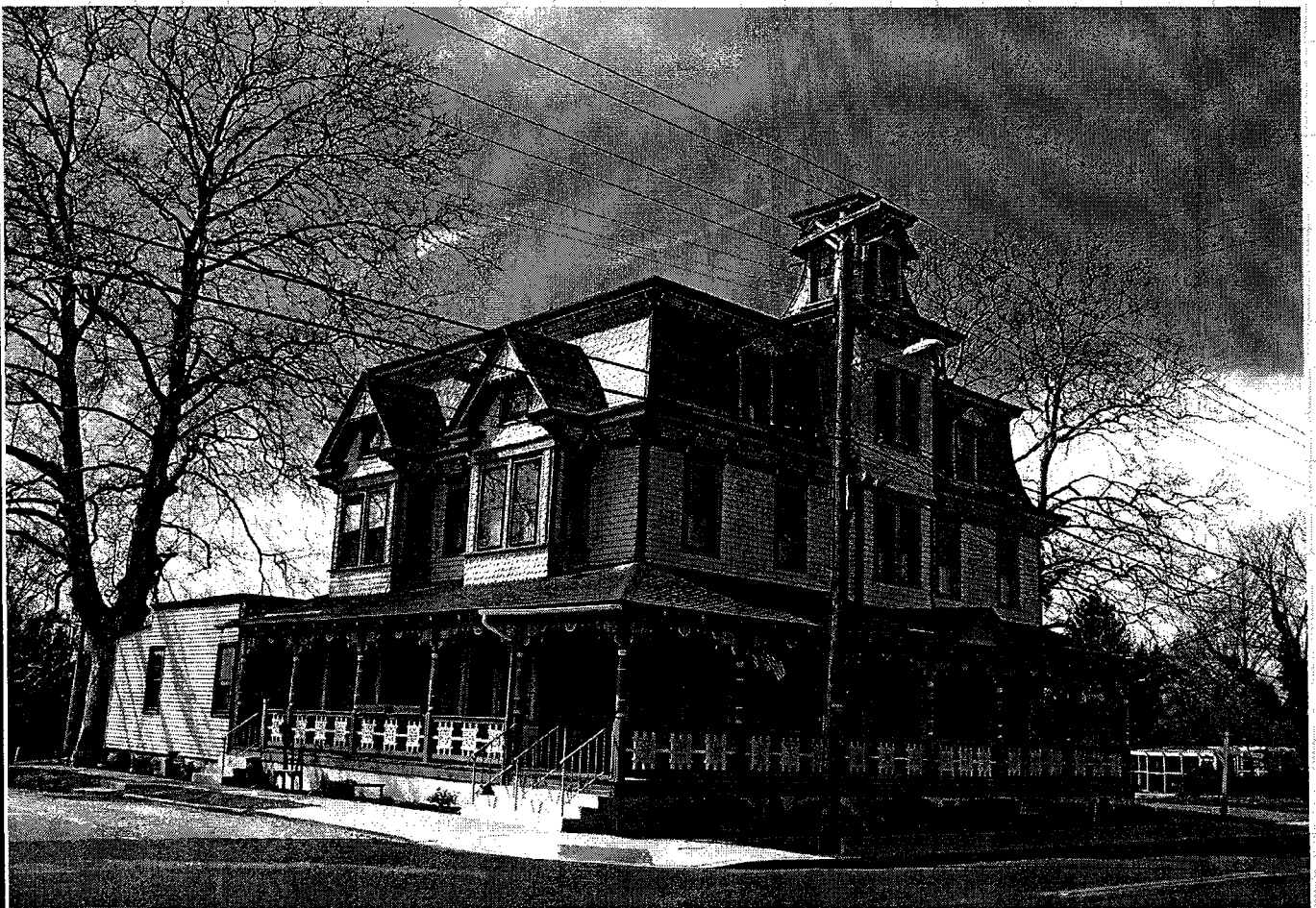
RLR

1/13/2007

SUBJECT

Exhibit 224-270 - F 2 Photograph of Absecon Manor

CHK'D



## **Memorandum**

ABS 046.10

Dated: July 7, 2007

To: Absecon Planning Board, Master Plan Committee

From: Robert L. Reid, AICP, PP, Board Planner

Re: **Proposed Affordable Housing Ordinance of Absecon City**

### **Introduction**

The New Jersey Council on Affordable Housing (COAH) adopted the third round methodology in November 2004. The new State housing plan ensures provisions for affordable housing for families and seniors and provides greater consistency with the State Plan, and creates incentives for very low-income and rental units.

The Third Round Methodology represents a comprehensive overhaul of the existing COAH system, and uses "growth share" to determine affordable housing obligations that are consistent with sound land use planning and smart growth. This growth share system reforms a system that has been criticized as cumbersome and rigid, and enables a town to determine its affordable housing obligation based on actual growth over time. The proposed COAH rules emphasize sound land use and long range municipal planning in keeping with New Jersey's smart growth agenda - affordable housing will not drive planning decisions; instead, sound planning decisions will drive the location and type of affordable housing to be provided.

Under the rules, one affordable unit must be provided for every eight market-rate residential units, and one affordable unit must be provided for every 25 jobs created, as measured by the square footage of new or expanded nonresidential construction.

The Third Round obligation is determined by the number of certificates issued since January 1, 2004 for both residential and non-residential development.

**ORDINANCE NO. \_\_\_\_ OF 2007**  
**AFFORDABLE HOUSING ORDINANCE OF ABSECON CITY**

Robert L. Reid, AICP, PP

ABS 046.10

July 7, 2007

In addition to the Third Round obligation of one affordable unit for each eight proposed market rate-units and one affordable unit for every 25 jobs created, the City of Absecon is obligated to provide approximately 180 affordable housing units under the First and Second round according to the COAH Annual Report – 2002-2003.

The Fair Housing Act, NJSA 52:27D-307 et. seq., dictate that every municipality in the State is required to provide opportunities for the development of its “fair share” of affordable housing. **Municipalities are not required to participate in the COAH program or provide affordable housing, but each municipality has constitutional obligation to provide for a realistic opportunity for the development of affordable housing with its framework of its land use regulations.**

The following Ordinance will require that all future development provide affordable housing or make a contribution to help support affordable housing in the Absecon Train Station Area Overlay.

The following Affordable Housing Ordinance is submitted for review and comment. This ordinance was composed based on discussions with the Planning Board Master Plan Committee members, Planning Board members at numerous meetings while preparing the 2005 Reexamination of the Master Plan. At those meetings we discussed components of the Reexamination Report and the Affordable Housing Ordinance. This proposed ordinance is consistent with and the 2005 Reexamination Report of the Master Plan.

Upon review and approval by the Planning Board the following Ordinance should be referred to City Council with findings that it is consistent with the Master Plan and recommend it be adopted.

NJSA 40:55D-26a states (in part) that Aprior to the adoption of a development regulation, or amendment thereto, the Planning Board shall make and transmit to the governing body, within 35 days after referral, a report including identifications of any provisions in the proposed development regulation, revision or amendment which are inconsistent with the Master Plan and recommendations concerning these inconsistencies and any other matters as the Board deems appropriate. Because this proposal originated at the Planning Board and the proposal is consistent with the Master Plan and this proposal is being referred to City Council with the statement that it is consistent with the Master Plan, the City Council does not need to refer it back to the Planning Board prior to final adoption.



**ORDINANCE NO. \_\_\_\_ OF 2007**  
**AFFORDABLE HOUSING ORDINANCE OF ABSECON CITY**

Robert L. Reid, AICP, PP

ABS 046.10

July 7, 2007

The following Ordinance is offered for informal review and comment, which is intended to replace §224-194 and Article VIII in its entirety.

**ORDINANCE NO. \_\_\_\_ OF 2007**

**AN ORDINANCE RESCINDING AND DELETING IN ITS ENTIRETY  
ARTICLE VIII R-FSH RESIDENTIAL FAIR SHARE HOUSING DISTRICT  
, §224-35, §224-36, §224-37, §224-38, §224-39, §224-40 §224-41, §224-  
42, §224-194, LOW AND MODERATE INCOME HOUSING AND  
REPLACING ARTICLE VIII WITH A NEW ARTICLE VIII ENTITLED  
AFFORDABLE HOUSING ORDINANCE OF THE CITY OF ABSECON**

**WHEREAS**, the Absecon City Planning Board adopted a Master Plan Reexamination Report and Master Plan Update on May 23, 2006; and

**WHEREAS**, the Master Plan Reexamination Report and Master Plan Update recommended creating an Affordable Housing Ordinance.

**NOW THEREFORE, BE IT ORDAINED** by the Governing Body for the City of Absecon City, County of Atlantic and State of New Jersey, that Chapter 224, Absecon Developmental Ordinance and the Absecon City Zoning Map is hereby amended as follows:

**§224-194 AFFORDABLE HOUSING**

**Section 1. SHORT TITLE**

This Ordinance shall be known and may be cited as: **AFFORDABLE HOUSING ORDINANCE OF ABSECON CITY.**

**Section 2. PURPOSE**

The Mount Laurel decisions stand for the principle that each municipality has a constitutional obligation to provide opportunities for the development of low and moderate income housing. The Mount Laurel decisions and the Fair Housing Act, NJSA 52:27D-301 et. seq., dictate that every municipality in the State is required to provide opportunities for the development of it's "fair share" of low and moderate income housing. The purpose of this Ordinance is to advance the public welfare and comply with the municipality's constitutional obligation to provide the opportunity for the municipality's fair share of low and moderate income housing.

**ORDINANCE NO. \_\_\_\_ OF 2007**  
**AFFORDABLE HOUSING ORDINANCE OF ABSECON CITY**

Robert L. Reid, AICP, PP

ABS 046.10

July 7, 2007

**Section 3. DEVELOPMENT REQUIRED TO PROVIDE AFFORDABLE HOUSING**

A. Within any zoning district permitting residential development or as a result of a use variance permitting residential development, developers shall provide a minimum of one (1) affordable housing unit for every eight (8) market rate housing units or the developer may make contribution in lieu of providing affordable housing in accordance with Section 5.

B. Developers within any zone permitting non-residential development shall provide a minimum of one (1) affordable housing unit for every twenty-five (25) jobs created. The developer of the non-residential development is required to construct affordable housing in the Absecon Train Station Area Overlay, or the developer may make a contribution in lieu of providing affordable housing in accordance with Section 5.

C. Within the Absecon Train Station Overlay Area, developers are required to provide affordable housing units if they avail themselves of the incentives set forth within §268 (B), a, Density; §269 (C), Building Coverage; §269 (D), Impervious Coverage; §269 (G), Building Height and §272, Parking Reduction. The development shall include a minimum of two (2) affordable housing units for every eight (8) market rate units [or a minimum of twenty-five (25%) percent]. Developers cannot make contributions in lieu of constructing affordable housing units in the Absecon Train Station Area Overlay. (Article XXXIII)

**Section 4 PROCEDURE**

A. The units, once quantified, are specifically identified in the site plan, along with the support services required to sustain low- and moderate-income residences. It is the intent herein not only to encourage the development of low- and moderate-income housing but also to encourage and sustain a quality of life for the low- and moderate-income residents within the proposed development.

**ORDINANCE NO. \_\_\_\_ OF 2007**  
**AFFORDABLE HOUSING ORDINANCE OF ABSECON CITY**

Robert L. Reid, AICP, PP

ABS 046.10

July 7, 2007

B. In preparing plans for low- and moderate-income housing, developers shall follow the following minimum criteria:

(a) Bedroom distribution of low- and moderate-income units:

- [1] A minimum 35% shall be two-bedroom units.
- [2] A minimum 15% shall be three-bedroom units.
- [3] A maximum 20% may be efficiency units.

(b) Pricing stratification for purchased housing shall be as follows:

<b>Category</b>	<b>Percentage of Units</b>	<b>Affordability Range (Target Market) in Percentage of Median Income</b>
Low	10	40 to 42.5
	30	42.6 to 47.5
	60	47.6 to 50
Moderate	10	50.1 to 57.5
	10	57.6 to 64.5
	10	64.6 to 68.5
	10	68.6 to 72.5
	20	72.6 to 77.5
	40	77.6 to 80

C. In pursuing the development of low- and moderate-income housing, the Planning Board may grant bulk variances and/or design waivers necessary to assist in adjusting the site plan configuration, thereby allowing the placement of disbursed low- and moderate-income housing within the limits of any specific project. This procedure will enable the CITY to work closely with the developer to tailor a specific site plan in the event that traditional zoning controls frustrate good site planning.

D. The developer shall deed-restrict all newly constructed low- and moderate-income sales units for a period of not less than 30 years and provide copies of a Council On Affordable Housing adopted restrictive covenant and mortgage lien along with details of the methods of screening applicants to be used as part of the site plan review process.

**ORDINANCE NO. \_\_\_\_ OF 2007**  
**AFFORDABLE HOUSING ORDINANCE OF ABSECON CITY**

Robert L. Reid, AICP, PP

ABS 046.10

July 7, 2007

E. Prior to the issuance of the first certificate of occupancy for any development, the developer shall submit to the administrative agent as designated by City Council a list of all low- and moderate-income units to be developed. This list shall include:

- (a) The unit number or address.
- (b) The targeted income group.
- (c) The number of bedrooms.
- (d) The affordability range.

F. The designated administrative agent shall maintain a comprehensive file on low- and moderate-income housing units. Prior to the issuance of a certificate of occupancy or certificate of continued occupancy, a statement from the screening agent certifying the proposed occupant's eligibility shall be submitted to the designated administrative agent and maintained in the file.

G. Affordable housing units to be built in accordance with the following schedule:

Percentage of Market-rate Units	Minimum Percentage of Low- and Moderate-Income Units
Completed	Completed
25	0
25 + 1 unit	10
50	50
75	75
90	100

H. Affirmative marketing. At the time of the initial occupancy of low- and moderate-income units the developer must demonstrate that have an outreach and marketing program to encourage participation of local persons to attempt to see that up to 50% of the units be occupied by persons currently living or working in Absecon City.

**ORDINANCE NO. \_\_\_\_ OF 2007**  
**AFFORDABLE HOUSING ORDINANCE OF ABSECON CITY**

Robert L. Reid, AICP, PP

ABS 046.10

July 7, 2007

I. Prior to the issuance of a certificate of occupancy, the developer shall pay to the designated administrative agent any management or marketing fees adopted by the agency.

J. Contributions in lieu of constructing affordable housing units on site shall only be used to fund eligible affordable housing activities within the Absecon Train Station Area Overlay (Article XXXIII).

K. Contributions in lieu of constructing affordable units shall be deposited in a separate, interest- bearing housing trust fund.

**Section 5. CONTRIBUTION IN LIEU OF CONSTRUCTING AFFORDABLE HOUSING UNITS**

A. Within any zoning district permitting residential development or as a result of a use variance permitting residential development, developers may make a contribution of \$35,000.00 (or an amount set by N.J.A.C. 5:94-5.4 Amount and duration of contributions, whichever is greater ) per affordable housing unit in lieu of providing affordable housing.

B. Developers within any zone permitting non-residential development may make a contribution of \$35,000.00 (or an amount set by N.J.A.C. 5:94-5.4 Amount and duration of contributions, whichever is greater ) per affordable housing unit in lieu of providing affordable housing.

C. Contributions will be used to help fund affordable housing units and affordable housing activities in the Absecon Train Station Area Overlay (Article XXXIII).

D. Residential developments with less than eight (8) market rate units or Non-residential developments creating less than twenty-five (25) jobs shall make a pro-rata share contribution in lieu of constructing affordable housing.

**Sections 6. EXEMPTIONS**

A. Developers that have received preliminary subdivision or site plan approval prior to the effective date of this Ordinance shall be exempt from providing affordable housing unless the developer seeks a substantial change in the approval.

B. Religious organizations that engage in construction activities for religious purposes shall be exempt from providing affordable housing.

**ORDINANCE NO. \_\_\_\_ OF 2007**  
**AFFORDABLE HOUSING ORDINANCE OF ABSECON CITY**

Robert L. Reid, AICP, PP

ABS 046.10

July 7, 2007

C. Development by public agencies, public hospitals, non-profit educational or religious institutions, charitable or not-for-profit entities legally established in accordance with the laws of the state of New Jersey shall be exempt from providing affordable housing.

**Section 7. COLLECTION OF CONTRIBUTION IN LIEU OF CONSTRUCTING AFFORDABLE HOUSING**

A. Developers shall pay 50 percent of the contribution to Absecon City at the issuance of permits.

B. Developers shall pay the remaining contribution to Absecon City at the issuance of certificates of occupancy. The developer shall be responsible for paying the difference between the contribution at certificate of occupancy and the contribution made at the issuance of building permit.

C. Contributions that are challenged shall be placed in an interest bearing escrow account by the municipality. If all or a portion of the contested contributions are returned to the developer, the accrued interest on the returned amount shall also be returned.

**Section 8. HOUSING TRUST FUND**

A. There is hereby created an interest bearing trust fund bank account with a bank to be named by City Council for the purpose of receiving contributions from residential and non-residential developers. All contributions made by developers pursuant to this Ordinance shall be deposited in this fund. No money shall be expended from the housing trust fund unless the expenditure conforms to a spending plan in accordance with COAH Guidelines.

If COAH determines that Absecon City is not in conformance with COAH's guidelines regarding contributions in lieu of constructing affordable housing, COAH is authorized to direct the manner in which all contributions collected pursuant to this Ordinance shall be expended. Such authorization is pursuant to: this Ordinance, COAH's guidelines on contributions and the written authorization from the Governing Body to a Bank to be named by City Council.

**ORDINANCE NO. \_\_\_\_ OF 2007**  
**AFFORDABLE HOUSING ORDINANCE OF ABSECON CITY**

Robert L. Reid, AICP, PP

ABS 046.10

July 7, 2007

**Section 9. USE OF FUNDS**

A. Money deposited in a housing trust fund shall be used for the construction of affordable housing and affordable housing activities in the Absecon Train Station Overlay Area. Such activities may include, but are not necessarily limited to: housing rehabilitation; new construction; the purchase of land for low and moderate income housing; extensions and/or improvements of roads and infrastructure low and moderate income housing sites; and/or assistance designed to render units more affordable to low and moderate income households and administrative costs necessary to implement Absecon's housing element.

B. Absecon will dedicate no more than twenty percent (20%) of contributions made for administrative purposes. Those purposes shall include but not necessarily be limited to salaries and benefits for municipal employees or consultant fees necessary to develop or implement a rehabilitation program; a housing element; and an affirmative marketing program. These monies shall be spent either in the one year period of protection sought by the City; during the implementation of the current plan which will extend beyond the one year period of protection and/or during the period of implementation of any affordable housing plan for the third housing cycle.

C. Contributions may be used to reimburse the City for the outlay of funds or bonding for current housing activities, if any, prior to the collection of contributions.

**Section 10. DEFINITIONS**

For definitions of terms in Article VIII, refer to §224-5, Definitions as amended.

**Section 11. INCONSISTENCY**

Any part of parts of any Ordinances which are found to be inconsistent with this Ordinance shall be deemed to have been repealed to the extent of such inconsistency.

**Section 12. EFFECTIVE DATE**

This Ordinance shall take effect upon passage and publication according to law and the filing of same with the County Planning Board in accordance with N.J.S.A. 40:55D

**ORDINANCE NO. \_\_\_\_ OF 2007**  
**AFFORDABLE HOUSING ORDINANCE OF ABSECON CITY**

Robert L. Reid, AICP, PP

ABS 046.10

July 7, 2007

**NOTICE IS HEREBY GIVEN** that the foregoing Ordinance was introduced and passed the first reading at a meeting of the City Council of the City of Absecon City, County of Atlantic and State of New Jersey, held on \_\_\_\_\_, and said Ordinance will be further considered for final passage and adoption at a public hearing to be held at the Municipal Complex located at 500 Mill Road, Absecon, New Jersey 08201, on \_\_\_\_\_, at 7:30 p.m. or as soon thereafter as the matter may be reached.

**BY ORDER OF THE MUNICIPAL COUNCIL OF THE CITY OF ABSECON**

Approved: \_\_\_\_\_  
Peter C. Elco, Mayor

Attest: \_\_\_\_\_  
Carie A. Crone, Acting Municipal Clerk

C:\Absecon Ordinances\2007 07 07 ABS 046 10 Affordable Housing ordinance.doc



## Memorandum

ABS 046.11

Date: July 7, 2007

To: Absecon City Planning Board, Master Plan Committee

From: Robert L. Reid, AICP, PP, Board Planner

Re: Proposed Security Plan Ordinance

The following is a draft Security Plan Ordinance for informal review and comment, which is to be added to Article XX, §224-120. It is recommended the following submission requirements be added is a requirement for all commercial site plans and residential developments that propose common areas for public use.

### ORDINANCE NO. \_\_\_\_\_ OF 2007

#### **AN ORDINANCE AMENDING ARTICLE XX, §224-120 V TO ADD A "SECURITY ANALYSIS AND PLAN".**

**BE IT ORDAINED** by the Governing Body for the City of Absecon City, County of Atlantic and State of New Jersey, that Chapter 224, Absecon Developmental Ordinance hereby amended as follows:

#### **§ 224-120 V. Security analysis and plan.**

- A. The intent and purpose of this ordinance is to provide minimum standards to guide the appropriate efforts that will help promote the public health and safety. Given the anticipated increase in resident population and increase in transient population in Absecon City within a major transportation corridor of Atlantic City, a security analysis and plan is required to reflect the efforts taken at a design stage to maximize security and safety of existing inhabitants, future inhabitants, visitors and the traveling public.
- B. At a minimum, the applicant shall:
- (1) Provide adequate emergency access routes for police, fire and ambulance services.
  - (2) Provide design plans which would facilitate the removal of the sick and/or injured, by stretcher, from within the structure; i.e., the width of hallways and door frames, etc.
  - (3) Provide call systems which will be used in remote areas of the project to

ORDINANCE NO. \_\_\_\_ OF 2007  
SECURITY PLAN ORDINANCE OF ABSECON CITY

Robert L. Reid, AICP, PP

ABS 046.11

July 7, 2007

facilitate the summoning of assistance in times of emergency.

- (4) Provide unit marking system to be used in multifamily dwellings that will facilitate the identification of individual units in times of emergency.
- (5) Indicate the architectural techniques used in the design to deter unlawful entry and other forms of crime; i.e., steel door jambs, locking mechanisms, exterior door design, alarm systems, security lighting, landscaping, elimination of dark alcoves, alleyways, etc.
- (6) Identify the techniques which will be used in the design to control access to the project.
- (7) Identify the proposed barriers, which will limit access to major roadways such as state highways Route 30, Route 9 to protect children and to secure the project from unauthorized personnel.
- (8) Identify the proposed security system, i.e. security cameras for recording activities in projects which incorporates commercial uses open to the public including, but not limited to , those projects which have common areas, community buildings, and/or office lobbies.
- (9) Indicate the technique that will be utilized in the design of the grounds and internal areas of multi-family units, housing developments and other residential areas that will facilitate natural, visual and auditory monitoring of the activities taking place within them, i.e., the glazing, lighting and positioning of the areas and access paths surrounding and leading to apartment buildings and units and the design of facilities which enables residents to view commonly used areas (paths, entries, play and seating areas) during their normal household activities.
- (10) Indicate other techniques that create a sense of safety and encourage improved upkeep by the residents / tenants and owners of non-residential uses, i.e., self-help tools which catalyze the natural impulses of residents to assume their social responsibilities.  
(refer to Defensible Space by Oscar Newman. Copy available at <http://www.defensiblespace.com/book.htm> ).
- (11) Identify the professional responsible for formulating the security plan for the proposed project.

ORDINANCE NO. \_\_\_\_ OF 2007  
SECURITY PLAN ORDINANCE OF ABSECON CITY

Robert L. Reid, AICP, PP

ABS 046.11

July 7, 2007

**NOTICE IS HEREBY GIVEN** that the foregoing Ordinance was introduced and passed the first reading at a meeting of the City Council of the City of Absecon City, County of Atlantic and State of New Jersey, held on \_\_\_\_\_, and said Ordinance will be further considered for final passage and adoption at a public hearing to be held at the Municipal Complex located at 500 Mill Road, Absecon, New Jersey 08201, on \_\_\_\_\_, at 7:30 p.m. or as soon thereafter as the matter may be reached.

**BY ORDER OF THE MUNICIPAL COUNCIL OF THE CITY OF ABSECON**

Approved: \_\_\_\_\_  
Peter C. Elco, Mayor

Attest: \_\_\_\_\_  
Carie A. Crone, Acting Municipal Clerk

C:\Absecon Ordinances\2007 07 07 ABS 046 11 SAP Ordinance.doc

## Memorandum

ABS 046.12

Date: July 20, 2007

To: Absecon Planning Board

From: Robert L. Reid, AICP, PP, Board Planner

Subject: Proposed Tree Protection Ordinance

---

### Introduction

Like many other municipalities throughout the state, Absecon has grown to meet the needs of housing. With the growth of population, commercial establishments have expanded to meet the needs of Absecon's residents. With the growth of residential and commercial establishments, large wooded areas have been removed and commercial establishments are encroaching on residential districts. There now is a need to protect existing vegetation between commercial and residential uses to create and maintain natural buffers and protect larger specimen trees throughout the commercial districts and multi-family districts of Absecon.

The following Tree Protection Ordinance is submitted for review and comment. This ordinance was composed based on discussions with the Planning Board Master Plan Committee members, Planning Board members at numerous meetings while preparing the 2005 Reexamination of the Master Plan. At those meetings we discussed components of the Reexamination Report and the Tree Protection Ordinance. This proposed ordinance is consistent with and the 2005 Reexamination Report. of the Master Plan.

Upon review and approval by the Planning Board the following Article should be referred to City Council with findings that it is consistent with the Master Plan and recommend it be adopted.

NJSA 40:55D-26a states (in part) that prior to the adoption of a development regulation, or amendment thereto, the Planning Board shall make and transmit to the governing body, within 35 days after referral, a report including identifications of any provisions in the proposed development regulation, revision or amendment which are inconsistent with the Master Plan and recommendations concerning these inconsistencies and any other matters as the Board deems appropriate. Because this proposal originated at the Planning Board and the proposal is consistent with the Master Plan and this proposal is being referred to City Council with the statement that it is consistent with the Master

Plan, the City Council does not need to refer it back to the Planning Board prior to final adoption.

**ORDINANCE NO. \_\_\_\_\_ OF 2007**

**AN ORDINANCE AMENDING CHAPTER 224, ABSECON  
DEVELOPMENTAL ORDINANCE CREATING  
A TREE PROTECTION ORDINANCE (ARTICLE XXXIV)**

**WHEREAS**, the Absecon City Planning Board adopted a Master Plan Reexamination Report and Master Plan Update on May 23, 2006; and

**WHEREAS**, the Master Plan Reexamination Report and Master Plan Update recommended creating A Tree Protection Ordinance.

**NOW THEREFORE, BE IT ORDAINED** by the Governing Body for the City of Absecon City, County of Atlantic and State of New Jersey, that Chapter 224, Absecon Developmental Ordinance is hereby amended as follows:

- A. Purpose. The purpose of this section is to encourage the protection of trees in the City of Absecon through the establishment of protective regulations, in order to control and, to the extent possible, ameliorate problems caused by flooding, wildfires, soil erosion, air and noise pollution, protect the health, safety and welfare of present and future citizen; preserve wildlife habitat; and promote high quality development.
- B. Definitions. As used in this section, the following terms shall have the meanings indicated:

**DISTURBANCE ZONE** — That portion of a commercial or multi-family residential vacant lot or developed lot covered by existing or proposed buildings, structures, or improvements and within a certain distance around, as noted below:

- 1. Principal or accessory commercial or multi-family residential structure of any type up to two stories: 20'.
- 2. Commercial building, Multi-family housing, or other structure over two stories: 30'.
- 3. Garage: 20'
- 4. Pool: 15'.
- 5. Septic system: 20'.
- 6. Underground utility: 10'.
- 7. Sidewalk, driveway, or parking area: 5'.
- 8. Drainage facilities to include retention/detention basins, drainage ditches, and swales: 15'.

ORDINANCE NO. \_\_\_\_ OF 2007  
TREE PROTECTION ORDINANCE OF ABSECON CITY

Robert L. Reid, AICP, PP

ABS 046.12

July 20, 2007

9. Other improvements: 5'.

**TREE** — Any woody perennial plant usually having one main stem or trunk and a definitely formed crown which has the potential, based on its genesis and species, to grow to a height of 10' or more. This definition also includes deciduous shade trees, street trees, ornamental trees, and evergreens.

**TREE PROTECTION ZONE** — That portion of a commercial or multi-family residential vacant lot or developed lot being outside the disturbance zone. That portion of land in any commercial district that adjoins an existing single-family use or residential district for a distance of 25' from the property line that adjoins an existing single-family use or residential district.

C. Applicability.

1. No commercial or multi-family residential property of 5,000 sq. ft. of disturbed area may be cleared without a Certification from the Cape-Atlantic Soil Conservation District.
2. No property in any commercial district that adjoins an existing single-family use or residential district may be cleared of trees or natural vegetation within 25' of the property line that adjoins the existing single-family use or residential district.
3. No commercial or multi-family residential property may be cleared of trees without an approved tree protection plan.
4. All commercial or multi-family properties with existing trees with a size of 24" diameter at breast height (dbh) or greater require an approved tree protection plan.
5. A tree protection plan shall be submitted, being incorporated with the required landscape plan, for all development projects necessitating site plan or subdivision review.
6. The provisions of this section shall be applicable to all owners of commercial and /or multi-family property within the corporate limits of the City of Absecon with the exception of the below-listed cases:
  - i. Trees being cut or removed in accordance with the provisions of a farm conservation plan as approved by the Cape-Atlantic Soil Conservation District, with said plan being filed with the city.
  - ii. Harvesting of timber in accordance with a State Bureau of Forestry approved forestry management plan, with said plan being filed with the city.
  - iii. Trees grown in conjunction with nursery, orchard, or Christmas tree farm uses.
  - iv. Pruning and/or removal of trees by utility companies for the provision of line clearance.
  - v. Pruning and/or removal of any tree, which constitutes an immediate threat to the health or safety of the public.
  - vi. Trees being cut or removed as a result of disease, infestation, or having what would constitute a progressive degenerative condition.

ORDINANCE NO. \_\_\_\_ OF 2007  
TREE PROTECTION ORDINANCE OF ABSECON CITY

Robert L. Reid, AICP, PP

ABS 046.12

July 20, 2007

In these instances, the city may require the submission of a letter from a certified New Jersey arborist or tree surgeon.

- vii. Properties with existing homes in residentially zoned areas and not subject to conditions of a previous approval granted by the Planning Board or Zoning Board of Adjustment.
- viii. Single-family building lots not subject to conditions of a previous approval granted by the Planning Board or Zoning Board of Adjustment.

- 7. The standards contained herein shall be considered the minimum threshold in terms of meeting the intent of the ordinance. Where state or federal regulations have applicability, the more restrictive regulation shall take precedence.

D. Tree protection plan requirements. If the submission of a tree protection plan is deemed necessary, it shall contain, at a minimum, the following elements of information:

- 1. Location of all existing and proposed buildings, driveways, septic systems, easements, underground utilities, drainage systems, and any other pertinent improvements.
- 2. Proposed tree clearing limits line.
- 3. The location of existing or proposed rights-of-way.
- 4. Location, size, and species of all trees, on the site, having a diameter (at breast height) of twelve inches or greater which are to be saved or cut, removed, or potentially damaged as a result of the proposed development.
- 5. Specifications for the protection of all trees during construction in the tree protection zone shall include:
  - i. Placement of snow fencing at the perimeter of the dripline so as to protect exposed roots and low hanging branches. Feeder roots shall not be cut closer than the dripline.
  - ii. Buffering of existing tree trunks and roots from heavy equipment.
  - iii. Prohibition against trees being used for roping, cable, signs, or fencing. Nails or spikes shall not be driven into any part of a tree.
  - iv. The clearing of the area at the base of the tree to allow for absorption of nutrients and water. Impervious coverage shall not be any closer to the main trunk than the distance of the dripline.
  - v. Removal of all vegetative and miscellaneous debris from the site and disposal of same in accordance with city policy.
- 6. Existing topography, to include existing and proposed final grading, within 25' of the proposed disturbance area.
- 7. Location of all watercourses, wetlands, and floodplains.
- 8. Every effort practical must be taken to protect and preserve existing trees on the site that are 24" diameter at breast height (dbh) or greater located in the DISTURBANCE ZONE or the TREE PROTECTION ZONE.

ORDINANCE NO. \_\_\_\_ OF 2007  
TREE PROTECTION ORDINANCE OF ABSECON CITY

Robert L. Reid, AICP, PP

ABS 046.12

July 20, 2007

Applicants / property owners are required to preserve such trees. The existing tree(s) should be worked into the site design / site layout. To remove such a tree, the applicant must demonstrate to the board that every effort has been made to preserve such trees. In the event that it is demonstrated by the applicant that it is impractical to preserve such trees, the applicant will be required to replace the tree with new trees. The minimum size replacement tree shall be 3-1/2" dbh, minimum height 14'. The actual number of replacement trees will be based on the size tree to be removed. A minimum of one 3-1/2" dbh tree for each 3" of existing tree diameter to be replaced is required.

The following are examples for various size trees - The number of replacement trees required for a 30" existing tree would be 10 trees at 3-1/2" dbh minimum in size; for a 36" existing tree, 12 trees at 3 1/2" dia. at dbh would be required.

The replacement trees will be required in addition to the required vegetation within the Absecon Developmental Ordinance for the development proposed.

E. Review procedure.

1. For all projects involving the submission of an application for land development, the requisite tree protection plan included with the landscape plan shall be forwarded to the Board Planner for review as part of the application for land development.
2. Any site clearing project prior to an application for land development, the requisite tree protection plan included with the landscape plan and Soil Erosion Certification (If applicable) shall be forwarded to the City Planner for review and recommendation to the Construction Official.
3. Survey of clearing limits prepared by a NJ Licensed Professional Land Surveyor shall be provided for review. Survey must include location of actual clearing limits in relation to the outbounds of the subject property and the originally proposed tree clearing limits line.
4. Clearing limits shall be checked by the Board Planner at the time of performance of the building foundation inspection, and as part of the final inspection process leading to the issuance of the certificate of occupancy.

F. Estimate of Probable Cost

An estimate of probable cost is required. The estimate of probable cost must include all proposed landscaping including replacement trees, if required, snow



ORDINANCE NO. \_\_\_\_ OF 2007  
TREE PROTECTION ORDINANCE OF ABSECON CITY

Robert L. Reid, AICP, PP

ABS 046.12

July 20, 2007

fencing and cost of survey of clearing limits. The estimate of probable cost will be reviewed by the Board Landscape Architect for acceptance.

G. Performance Guaranty

A Performance Guaranty is required in accordance with Section 224-176.

H. Maintenance Guaranty

A Maintenance Guaranty is required in accordance with Section 224-177.

I. Penalties.

In addition to any other penalties provided for by law or regulation, violators of any provision of this section may be required to restore the subject property to its original level type of vegetation.

**Topsoil protection.**

No topsoil shall be removed from the site or used as spoil. Topsoil moved during the course of construction shall be redistributed within the site and shall be stabilized by seeding or planting.

**NOTICE IS HEREBY GIVEN** that the foregoing Ordinance was introduced and passed the first reading at a meeting of the City Council of the City of Absecon City, County of Atlantic and State of New Jersey, held on \_\_\_\_\_, and said Ordinance will be further considered for final passage and adoption at a public hearing to be held at the Municipal Complex located at 500 Mill Road, Absecon, New Jersey 08201, on \_\_\_\_\_, at 7:30 p.m. or as soon thereafter as the matter may be reached.

**BY ORDER OF THE MUNICIPAL COUNCIL OF THE CITY OF ABSECON**

Approved: \_\_\_\_\_  
Peter C. Elco, Mayor

Attest: \_\_\_\_\_  
Carie A. Crone, Acting Municipal Clerk

## Memorandum

ABS 046.15

Dated: July 7, 2007

To: Absecon Planning Board, Master Plan Committee

From: Robert L. Reid, AICP, PP, Board Planner

Re: **Proposed to Change the Absecon City Zoning Map**

### Introduction

The Absecon City Planning Board adopted a Master Plan Reexamination Report and Master Plan Update on May 23, 2006. The Master Plan Reexamination Report and Master Plan Update recommended numerous changes to the Absecon City Zoning Map.

The following proposed Ordinance to change a portion of the Absecon Developmental Ordinance to adopt the new Absecon City Zoning Map created as the result of numerous zone changes.

This ordinance was composed based on discussions with the Planning Board Master Plan Committee members, Planning Board members at numerous meetings while preparing the 2005 Reexamination of the Master Plan. At those meetings we discussed components of the Reexamination Report and the proposed ordinance. This proposed ordinance is consistent with and the 2005 Reexamination Report of the Master Plan.

Upon review and approval by the Planning Board the following proposed ordinance should be referred to City Council with findings that it is consistent with the Master Plan and recommend it be adopted.

NJSA 40:55D-26a states (in part) that prior to the adoption of a development regulation, or amendment thereto, the Planning Board shall make and transmit to the governing body, within 35 days after referral, a report including identifications of any provisions in the proposed development regulation, revision or amendment which are inconsistent with the Master Plan and recommendations concerning these inconsistencies and any other matters as the Board deems appropriate. Because this proposal originated at the Planning Board and the proposal is consistent with the Master Plan and this proposal is being referred to City Council with the statement that it is consistent with the Master Plan, the City Council does not need to refer it back to the Planning Board prior to final adoption.

ORDINANCE NO. \_\_\_\_ OF 2007  
**Ordinance to change the Absecon City Zoning Map**

Robert L. Reid, AICP, PP

ABS 046.15

July 7, 2007

ORDINANCE NO. \_\_\_\_ OF 2007

**AN ORDINANCE AMENDING ARTICLE II, §224-3 (ZONING MAP;  
INTERPRETATION OF BOUNDARIES )OF THE CODE OF THE CITY OF  
ABSECON TO CHANGE THE ABSECON CITY ZONING MAP.**

**WHEREAS**, the Absecon City Planning Board adopted a Master Plan Reexamination Report and Master Plan Update on May 23, 2006; and

**WHEREAS**, the Master Plan Reexamination Report and Master Plan Update recommended numerous changes to the Absecon City Zoning Map.

**NOW THEREFORE, BE IT ORDAINED** by the Governing Body for the City of Absecon City, County of Atlantic and State of New Jersey, that Chapter 224, Section 3, A of the Absecon Developmental Ordinance is hereby amended and replaced as follows:

**SECTION 1.**

**§ 224-3. ZONING MAP; INTERPRETATION OF BOUNDARIES**

A. Zoning Map and Boundaries. All areas within the boundaries of Absecon City have been assigned to a zoning district. Zoning district boundaries established by this chapter are shown upon the plan entitled "Absecon City Zoning Map" prepared by Robert L. Reid, AICP, PP, dated April 12, 2007 on file at the City Clerk's Office and Planning Board Office), and attached hereto and made a part of hereof, which together with all explanatory matter thereon is declared or be a part of this chapter.

**SECTION 2.**

This Ordinance will take effect upon final passage and publication as required by law.

ORDINANCE NO. \_\_\_\_ OF 2007  
**Ordinance to change the Absecon City Zoning Map**

Robert L. Reid, AICP, PP

ABS 046.15

July 7, 2007

**NOTICE IS HEREBY GIVEN** that the foregoing Ordinance was introduced and passed the first reading at a meeting of the City Council of the City of Absecon City, County of Atlantic and State of New Jersey, held on \_\_\_\_\_, and said Ordinance will be further considered for final passage and adoption at a public hearing to be held at the Municipal Complex located at 500 Mill Road, Absecon, New Jersey 08201, on \_\_\_\_\_, at 7:30 p.m. or as soon thereafter as the matter may be reached.

**BY ORDER OF THE MUNICIPAL COUNCIL OF THE CITY OF ABSECON**

Approved: \_\_\_\_\_  
Peter C. Elco, Mayor

Attest: \_\_\_\_\_  
Carie A. Crone, Acting Municipal Clerk

C:\Absecon Ordinances\2007 07 07 ABS 046 15 ZM.doc



**Robert L. Reid, AICP, PP**

*Professional Planner*

**www.abseconplanner.com**

**e-mail: abseconplanner@comcast.net**

**366 Upland Avenue, Absecon NJ 08201**

**609-652-3049**

**cell 609-289-6424**

## **Memorandum**

**ABS 046.16**

**Dated:** July 20, 2007  
**To:** Absecon Planning Board, Master Plan Committee  
**From:** Robert L. Reid, AICP, PP, Board Planner  
**Re:** Proposed Amendment to §224-5, Definitions

### **Introduction**

The Absecon City Planning Board adopted a Master Plan Reexamination Report and Master Plan Update on May 23, 2006. The Master Plan Reexamination Report and Master Plan Update recommended numerous changes to the Absecon Developmental Ordinance and Absecon City Zoning Map.

The following proposed Ordinance to amend the definitions portion of the Absecon Developmental Ordinance to include new definitions of terms created as the result of numerous zone changes.

This ordinance was composed based on discussions with the Planning Board Master Plan Committee members, Planning Board members at numerous meetings while preparing the 2005 Reexamination of the Master Plan. At those meetings we discussed components of the Reexamination Report and the proposed ordinance. This proposed ordinance is consistent with and the 2005 Reexamination Report of the Master Plan.

Upon review and approval by the Planning Board the following proposed ordinance should be referred to City Council with findings that it is consistent with the Master Plan and recommend it be adopted.

ORDINANCE NO. \_\_\_\_ OF 2007  
DEFINITIONS ORDINANCE OF ABSECON CITY

Robert L. Reid, AICP, PP

ABS 046.16

July 20, 2007

NJSA 40:55D-26a states (in part) that prior to the adoption of a development regulation, or amendment thereto, the Planning Board shall make and transmit to the governing body, within 35 days after referral, a report including identifications of any provisions in the proposed development regulation, revision or amendment which are inconsistent with the Master Plan and recommendations concerning these inconsistencies and any other matters as the Board deems appropriate. Because this proposal originated at the Planning Board and the proposal is consistent with the Master Plan and this proposal is being referred to City Council with the statement that it is consistent with the Master Plan, the City Council does not need to refer it back to the Planning Board prior to final adoption.

ORDINANCE NO. \_\_\_\_ OF 2007

**AN ORDINANCE AMENDING §224-5, DEFINITIONS IN THE  
DEVELOPMENTAL ORDINANCE OF THE CITY OF ABSECON**

**WHEREAS**, the Absecon City Planning Board adopted a Master Plan Reexamination Report and Master Plan Update on May 23, 2006; and

**WHEREAS**, the Master Plan Reexamination Report and Master Plan Update to include new definitions of terms created as the result of numerous zone changes.

**NOW THEREFORE, BE IT ORDAINED** by the Governing Body for the City of Absecon City, County of Atlantic and State of New Jersey, that Chapter 224, Absecon Developmental Ordinance is hereby amended as follows:

The following definitions of terms shall be added to § 224-5 of the Absecon Developmental Ordinance.

Any duplication of terms in §224-5 at the time of adoption of this ordinance are hereby replaced by the definition in this ordinance.

**Absecon Train Station Area Overlay** - Means the area described in Ordinance \_\_\_\_\_ (Article XXXIII) the Absecon Train Station Area Overlay.

**Accessory Building Setback** – Means a setback for a structure that is subordinate in size and intensity of use to the principal use on the subject property and is behind the front yard setback of the principal structure.

ORDINANCE NO. \_\_\_\_ OF 2007  
DEFINITIONS ORDINANCE OF ABSECON CITY

Robert L. Reid, AICP, PP

ABS 046.16

July 20, 2007

**Accessory Use** – Means a structure and / or use customarily incidental to the principal structure and/or use; a structure and/or use that is subordinate in size and intensity of use to the principal use on the subject property; includes gatehouses, detached garages, carports, guardhouses and storage facilities for maintenance and equipment; pools, sheds, or similar structures.

**Act** - Means the Fair Housing Act of 1985, P.L. 1985, c.222 (N.J.S.A. 52:27D-301 et seq.).

**Active Indoor & Outdoor Recreation** - Leisure time activities, usually of a formal nature and often performed with others, requiring equipment and taking place at prescribed places, sites, or fields.

**Adult Day Care** – Means a facility that offers daily organized social and recreational activities, transportation services, meals, and other support services appropriate for senior citizens.

**Affordable** - Means a sales price or rent within the means of a low or moderate income household as defined in N.J.A.C. 5:94-7.

**Affordable Housing Activities** - means affordable housing units, site improvements associated with and in support of affordable housing units such as parking, pedestrian walks, pedestrian bridges, site lighting, site landscaping, street furniture, common open space, etc.

**Affordable Housing Unit** - Means Low Income Housing or Moderate Income Housing.

**Assisted Living Facility** – Means residences for frail elderly that provide rooms/beds, meals, personal care, and supervision of self-administered medication. Other services, such as recreation activities, financial services, and transportation.

ORDINANCE NO. \_\_\_\_ OF 2007  
DEFINITIONS ORDINANCE OF ABSECON CITY

Robert L. Reid, AICP, PP

ABS 046.16

July 20, 2007

**Buffer** - Means open space, landscaped area with fences, walls, berms, or any combination thereof used to physically separate or screen one use property from another so as to visually shield or block noise, lights or other nuisances.

**Building, Height of** – Means the vertical distance measured from the average elevation of finished grade surrounding the building to the highest point of the coping of a flat roof or the deckline of a mansard roof or the average height of the highest principal gable of a pitch or hip roof. In no case will the ridge line of a principal gable or hip roof exceed 10' above the maximum permitted building height.

**Child Care Center / Child daycare** – Means an establishment providing for the care, supervision, and protection of children licensed by the NJ Department of Human Services pursuant to P.L. 1983, c. 492 (C.30:5B-1 et seq.).

**COAH** - Means the New Jersey Council on Affordable Housing.

**Congregate Senior Residences** – Means apartments and dwellings for the elderly that provide communal dining facilities and services, such as housekeeping, organized social and recreation activities, transportation services, and other support services appropriate for the senior residences.

**Contributions** - Means money paid by an individual, person, partnership, association, company or corporation in lieu of constructing affordable housing and affordable housing activities in the Absecon Train Station Area Overlay.

**Developer** - Means any person, partnership, association, company or corporation that is the legal or beneficial owner or owners of a lot or any land proposed to be included in a proposed development including the holder of an option to contract or purchase, or other person having an enforceable proprietary interest in such land.



ORDINANCE NO. \_\_\_\_ OF 2007  
DEFINITIONS ORDINANCE OF ABSECON CITY

Robert L. Reid, AICP, PP

ABS 046.16

July 20, 2007

**Development** - Means the division of a parcel of land into two or more parcels, the construction, reconstruction, conversion, structural alteration, relocation, or enlargement of any use or change in the use of any building or other structure, or of any mining, excavation or landfill, and any use or change in the use of any building or other structure, or land or extension of use of land, for which permission may be required pursuant to N.J.S.A. 40:55D-1 et seq.

**Drip Line** – Means an imaginary line that defines the limits of the tree canopy which location is determined by extending the tree canopy to the ground.

**Extended Care Facility** – Means a long-term facility licensed or approved by the state as a nursing home, infirmary unit of a home for the aged, or a governmental medical institution.

**Family Day Care Home** - Means the private residence of a family day care provider which is registered as a family day care home pursuant to the Family Day Care Provider Registration Act.

**Gross Floor Area** - Means the areas of all floors as measured at the exterior walls including the basement and attic space having a vertical clearance of 7' 6" or more.

**Gross Leasable Floor Area** - Means the area of floor exclusive of stairwells, elevators, common halls, common foyer, common maintenance areas, exterior walls, interior walls and similar areas.

**Health Club / Spa** – Means an establishment that provides facilities for aerobic exercises, running and jogging, exercise equipment, game courts, swimming facilities, and saunas, showers, massage rooms, lockers, pro shop, instruction programs, aerobic classes, weight control programs and similar activities.

ORDINANCE NO. \_\_\_\_ OF 2007  
DEFINITIONS ORDINANCE OF ABSECON CITY

Robert L. Reid, AICP, PP

ABS 046.16

July 20, 2007

**Historic District** – Means one or more historic sites and intervening or surrounding property in Absecon City that has been designated as a Historic District by the New Jersey State Historic Preservation Office.

**Historic Site** – Means any real property, man-made structure, natural object or configuration or place of outstanding historical, archeological, cultural significance, scenic or architectural significance and designated as such by the State of New Jersey or the federal government.

**Housing Trust Fund** - Means the interest bearing account in which all development fees will be deposited pursuant to N.J.A.C. 5:93-8.15.

**Inclusionary Development** - Means a development containing low and moderate income units. This term includes, but is not necessarily limited to, new construction, the conversion of a nonresidential structure to a residential structure and the creation of low and moderate income units through gut rehabilitation of a vacant residential structure.

**Independent Living Facility, Adult Retirement Community** - Means an age-restricted planned development that emphasizes social and recreational activities but may also provide personal services, limited health facilities, and transportation. Communal dining may be provided.

**Intermediate Care Facility** – Means a facility that provides personal care (including: dressing, eating, and health-related care and services) on a regular basis, to individuals who require such assistance but who do not require the degree of care and treatment that a hospital or skilled nursing facility would provide.

**Low Income** - Means 50 percent or less of the median gross household income for households of the same size within the housing region in which the household is located, based upon the U.S. Department of Housing and Urban Development's (HUD) Section 8 Income Limits (uncapped) averaged across counties for COAH's housing region.

ORDINANCE NO. \_\_\_\_ OF 2007  
DEFINITIONS ORDINANCE OF ABSECON CITY

Robert L. Reid, AICP, PP

ABS 046.16

July 20, 2007

**Low Income Housing** - Means housing affordable according to Federal Department of Housing and Urban Development or other recognized standards for home ownership and rental costs and occupied or reserved for occupancy by households with a gross household income equal to 50 percent or less of the median gross household income for households of the same size within the housing region in which the housing is located.

**Market Rate Units** - Means housing not restricted to low- and moderate-income households that may sell at any price determined by a willing seller and a willing buyer.

**Medical Facilities** - Means a facility that contains establishments dispensing health services.

**Mid-Rise** – Means a residential building, 4 to 6 stories in height.

**Mixed Use Development** – Means a combination of residential and commercial uses on the same parcel of land.

**Moderate Income** - means more than 50 percent but less than 80 percent of the median gross household income for households of the same size within the housing region in which the household is located, based upon the U.S. Department of Housing and Urban Development's (HUD's) Section 8 Income Limits (uncapped) averaged across counties for COAH's housing regions.

**Moderate Income Housing** - Means housing affordable according to Federal Department of Housing and Urban Development or other recognized standards for home ownership and rental costs and occupied or reserved for occupancy by households with a gross household income equal to more that 50 percent but less than 80 percent of the median gross household income for households of the same size within the housing region in which the housing is located.

**Multi-Family Dwelling** – Means a residential use / building with three or more individual dwelling units.

ORDINANCE NO. \_\_\_\_ OF 2007  
DEFINITIONS ORDINANCE OF ABSECON CITY

Robert L. Reid, AICP, PP

ABS 046.16

July 20, 2007

**Nursing Facility, Nursing Home, Long-Term Care Facility** - Means An institution that is licensed or approved by the state to provide health care under medical supervision for 24 or more consecutive hours.

**Parking Generation Matrix** – Means a table that includes an average sample week and a peak schedule of anticipated events, hours of operation, anticipated site / building occupancy and anticipated parking generation for each day divided into hours for each resident (If applicable), each employee and/or visitor / patron / client / customer / patient for each shift.

**Parking Requirements, Residential** - Means requirements for parking as required by the New Jersey Residential Site Improvement Standards (RSIS).

**Parking Space** - Means a space which, exclusive of driveways and turning areas, is 9' wide x 18' long with the exception of required ADA parking spaces and parking for retail uses. See term "Parking Space, retail". If a parking space is in enclosed garage the minimum size is 10' wide x 19' long. All parking spaces will be paved and have individual spaces marked and will be so designated, maintained and regulated that no parking space, backing onto or other maneuvering incidental to parking will be on any public street, walk or alley and so that any vehicle will be moved without moving another.

**Parking Space, retail** – Means a paved parking space for retail uses with a minimum of 50% - 10' wide x 18' long in size nearest the patron entrance. The remainder of parking spaces may be reduced to 9' wide x 18' long with exception of required ADA parking spaces. Also see term "Parking Space".

**Parking Space, other** – Means a paved parking space for other than retail uses - 9' x 18' with the exception of required ADA parking spaces. Also see term "Parking Space" and "Parking Space, retail".

**Pedestrian oriented uses** – Means any retail or service establishment that encourages pedestrian activity. Example: small retail shops,

ORDINANCE NO. \_\_\_\_ OF 2007  
DEFINITIONS ORDINANCE OF ABSECON CITY

Robert L. Reid, AICP, PP

ABS 046.16

July 20, 2007

**Vehicle oriented uses** – Means any retail or service establishment that encourages vehicle activity or use. Example: car wash, auto repair and maintenance, gasoline stations, service stations, furniture stores, appliance stores, storage facilities, distribution centers, delivery services, large box retail stores, and similar uses.

**Setback** – Means the distance between the building and any lot line.

**Service Establishments** – Means any business establishment that provides a service to the public with retail as customarily incidental accessory activity such as: locksmith, computer repair, restaurants, coffee shops, barber shops, beauty salons, dry cleaner, shoe repair, nail salon, pet grooming, veterinary office, tanning salon, tailoring, photographic studio, and similar type uses

**Story** - Means the portion of a building included between the surface of the floor and the surface of the next floor above it, including basements, ground level parking garages and attic area with at least 40% of the floor area with 8' or higher ceiling. A habitable space at least 8' height from the floor to ceiling for commercial and residential uses, 7' minimum height from floor to ceiling for parking garages for passenger automobiles only.

**Story, Half** - Means a second floor level or higher that consists of a steep slope gable roof with or without dormers.

**Tree Protection** – Means measures taken to protect existing trees from removal or damage during the site design process and / or during construction. Standard pre-construction design measures include site / building layout and configuration, and site grading to design around existing trees. Measures taken at the time of construction, such as temporary fencing and / or tree wells at the drip line and similar measures are implemented.

ORDINANCE NO. \_\_\_\_ OF 2007  
DEFINITIONS ORDINANCE OF ABSECON CITY

Robert L. Reid, AICP, PP

ABS 046.16

July 20, 2007

**Wellness Center / Health Center** – Means a complete medical /fitness health facility with therapeutic and psychological welling programs. A facility that can provide holistic approach to health that addresses every aspect of wellbeing. Such a facility can include many services. The following services are considered customary and incidental:

Acupuncture; Anti-aging Aquatics; Chiropractic Disease management programs; Executive physicals and wellness screenings; Exercise and fitness training; Massage therapy; Mind/spirit classes; Nutrition; Orthopedic medicine; Personal training; Physical therapy; Preventive imaging; Spa services; Travel immunizations; Vein treatments; and similar uses.

**NOTICE IS HEREBY GIVEN** that the foregoing Ordinance was introduced and passed the first reading at a meeting of the City Council of the City of Absecon City, County of Atlantic and State of New Jersey, held on \_\_\_\_\_, and said Ordinance will be further considered for final passage and adoption at a public hearing to be held at the Municipal Complex located at 500 Mill Road, Absecon, New Jersey 08201, on \_\_\_\_\_, at 7:30 p.m. or as soon thereafter as the matter may be reached.

**BY ORDER OF THE MUNICIPAL COUNCIL OF THE CITY OF ABSECON**

Approved: \_\_\_\_\_  
Peter C. Elco, Mayor

Attest: \_\_\_\_\_  
Carie A. Crone, Acting Municipal Clerk

C:\Absecon Ordinances\2007 07 20 Definitions.doc