

Photoshop 5.5 The Type Tool

The type tool in Photoshop 5.5 has been expanded to give you even more control over text. Here are a few of the new additions.

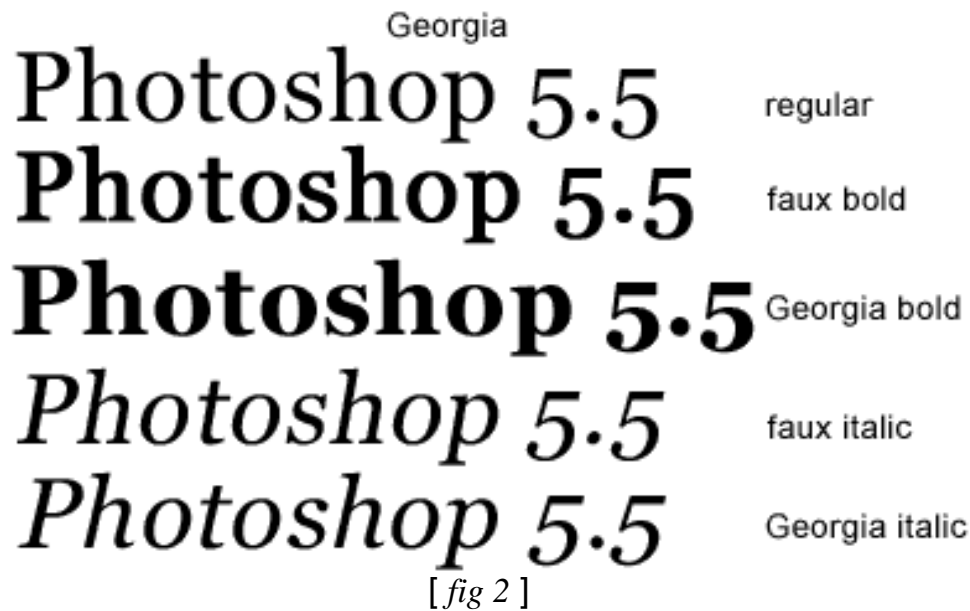
1. Click on the type tool in the toolbar to activate the type tool dialog box. [*fig 1*]



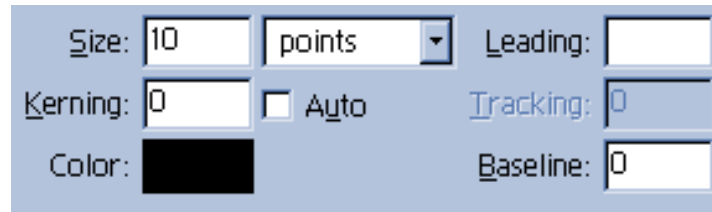
[*fig 1*]

2. Set the font size and alignment of the text then click in the white space and begin

typing. Notice right below the font, the words faux bold, faux Italic and underline. These are simulated effects. Select the text you typed with the cursor and check one of them to apply. Now you can make any font bold or italic, even if it isn't in the font family! Well..faux bold and italic anyway. In [*fig 2*] you can see the font Georgia, and the difference between faux bold and italic and the font family's bold and italic versions. There is a slight difference, but you can now make any font in your font library look bold or slanted.



3. [fig 3] shows the section of the type dialog box right below the simulated effects.



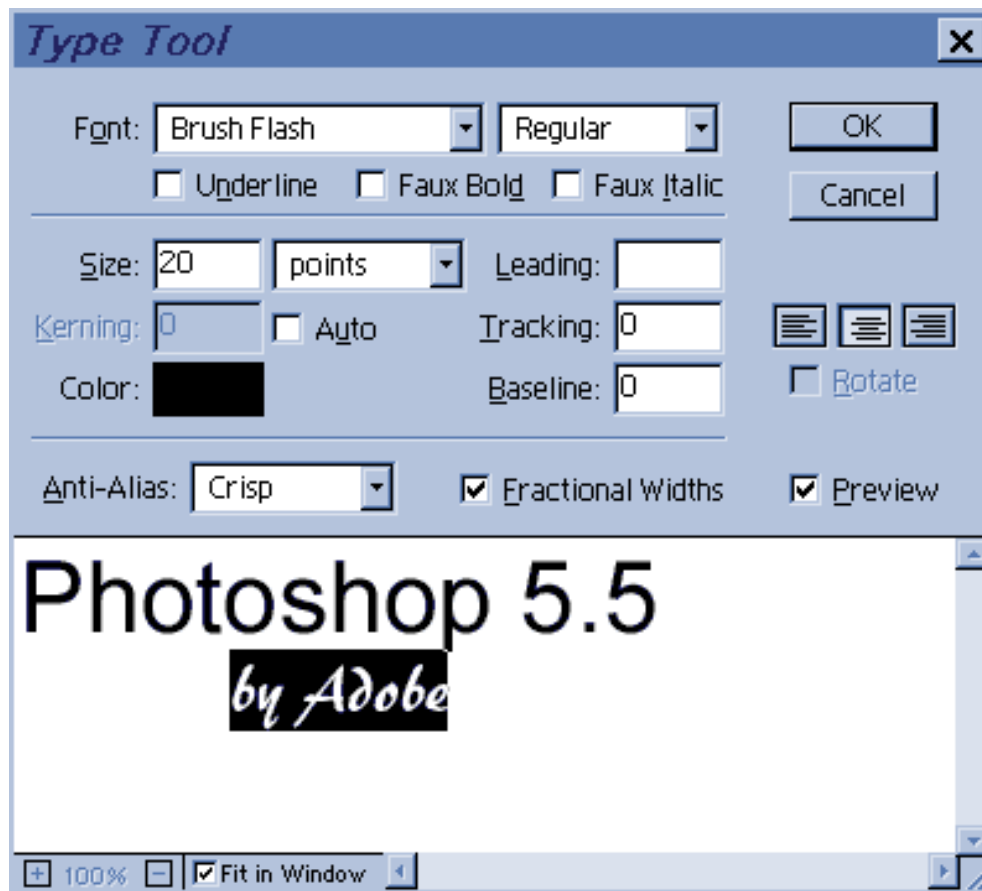
[fig 3]

We know what size means. Kerning effects the width of the text by effecting the actual characters. [fig 3b] shows text without kerning and with negative kerning. Positive kerning would have made the word wider. Tracking also effects the width of the text by effecting the space between the characters. [fig 3b] also shows an example of this. Leading effects the space between lines of text. [fig 3c] shows an example of no leading, compared to leading of 50.



5. You can also change the color of the text in the dialog box by clicking on the swatch next to the word color, and selecting the color you want. You can even apply effects to some of the text and different effects to the rest. You can use multiple fonts or sizes without leaving the dialog box. To do this, you select the letters you want to change, make the changes you want, and they will be applied only to the text that is selected.

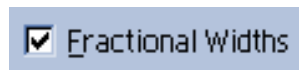
[fig 4] shows a heading where the words Photoshop 5.5 are typed in Arial at 30 points and the words 'by Adobe' are selected and have been changed to 20 points and brush flash font.



[fig 4]

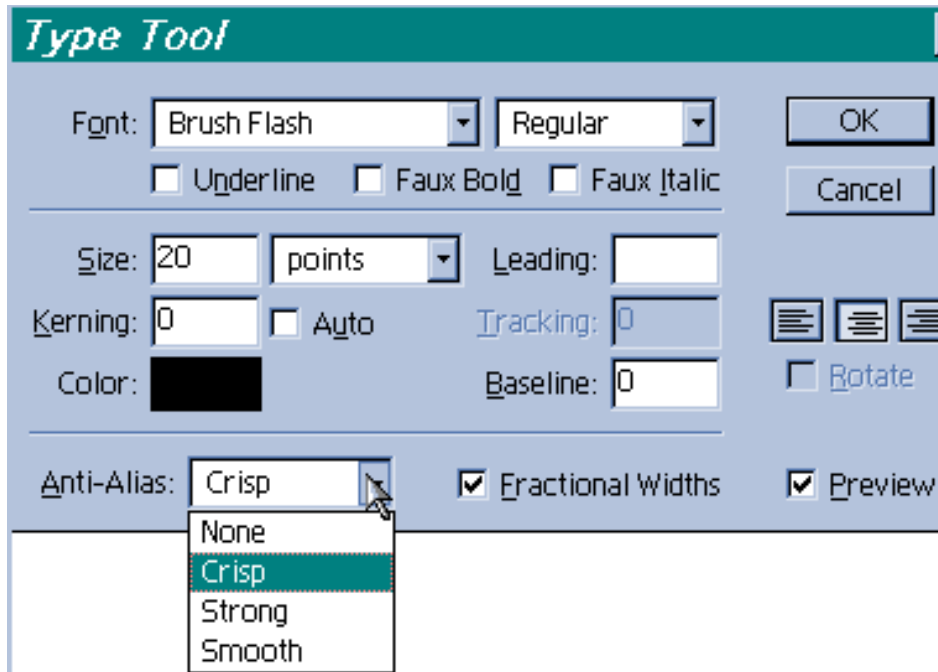
6. I should mention that you now have the option to turn off fractional widths. Photoshop uses them by default, but you can uncheck this option by clicking in the check box.

[fig 5] . Fractional widths refer to the spaces between characters and usually look best, but the Photoshop 5.5 manual states that when using small fonts, this could cause problems , so you might want to uncheck the box to turn them off in that case..



[fig 5]

7. If you are familiar with Photoshop, or graphics at all, then you know about anti-aliased type. It makes the type look smooth around the edges instead of jagged. Now you can choose different types of anti aliasing. Crisp, Smooth or strong or none. Just click the down arrow next to the box labeled anti-aliasing [fig 6] The different settings are demonstrated in [fig 7]

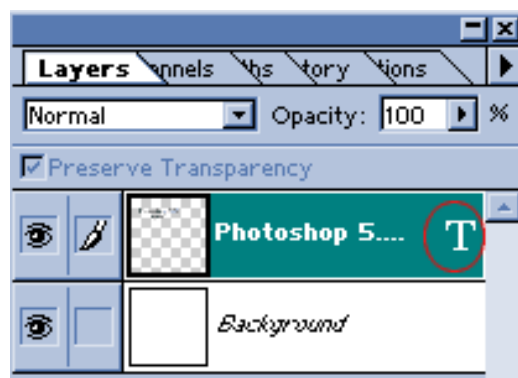


[fig 6]

None Smooth
Crisp Strong

[fig 7]

8. When working with type in Photoshop 5.5, just as in Photoshop 5, you must render the type layer before you can apply filters to it. Until you render the layer, you can edit it by clicking on the 'T' in the layers palette. To render it, right click on the 'T' and choose render layer' from the menu. [fig 8] With all of these new additions to the type tool, you can make text look almost anyway you can imagine!



[fig 8]

The end