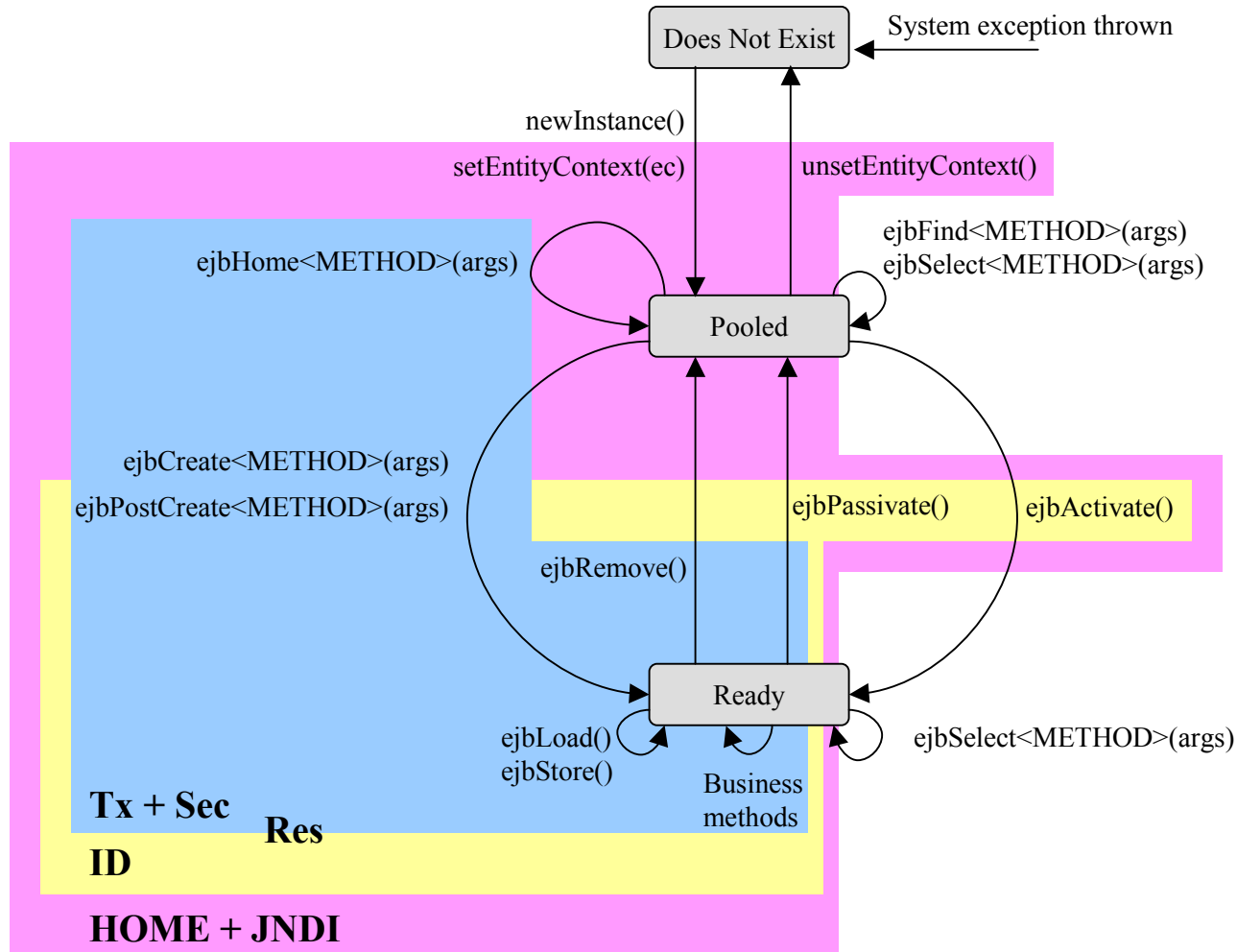


Entity beans



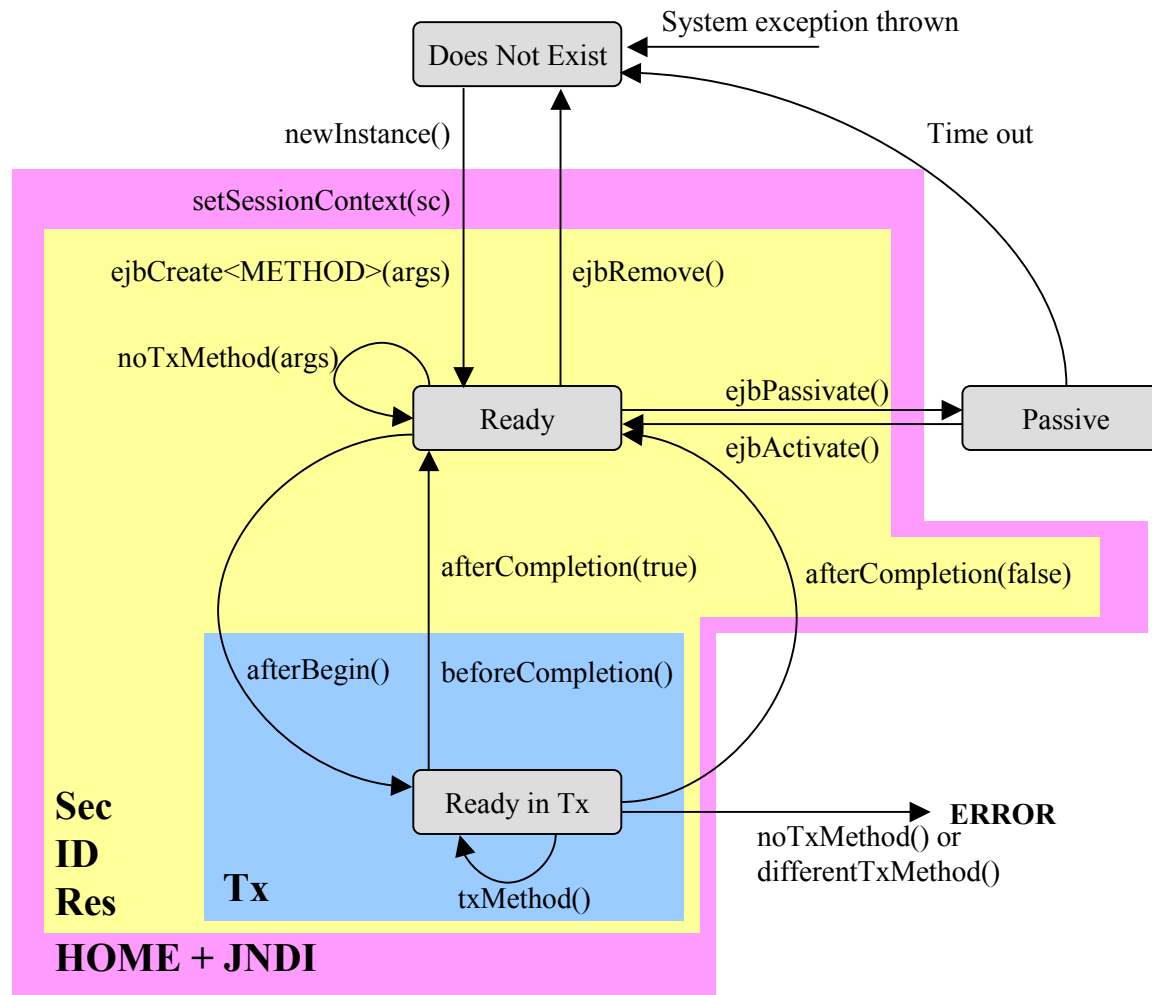
Legend:

HOME: access to `getEJB [Local] Home ()`
ID: access to `getEJB [Local] Object ()` and `getPrimaryKey ()`
Tx: access to `getRollbackOnly ()` and `setRollbackOnly (boolean)`
Sec: access to `getCallerPrincipal ()` and `isCallerInRole (String)`
JNDI: access to `java:comp/env`
Res: access to Resource manager and enterprise beans

Note:

`ejbFind` and `ejbSelect` methods are not implemented by the bean provider, so no operations may be invoked from them.

CMT Stateful session beans



Legend:

HOME: access to `getEJB [Local] Home ()`

ID: access to `getEJB [Local] Object ()`

Tx: access to `getRollbackOnly ()` and `setRollbackOnly (boolean)`

Sec: access to `getCallerPrincipal ()` and `isCallerInRole (String)`

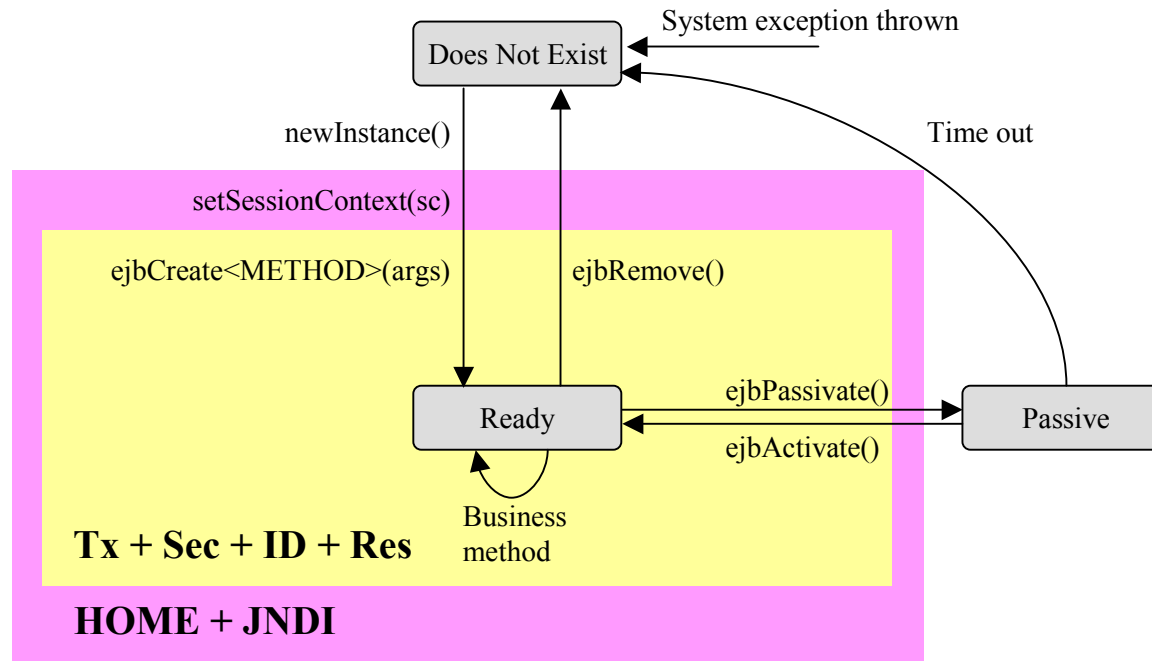
JNDI: access to `java:comp/env`

Res: access to Resource manager and enterprise beans

Note:

`afterCompletion` belongs to the SEC and ID groups but it does not belong to the Res group!!

BMT Stateful session beans



Legend:

HOME: access to `getEJB [Local] Home ()`

ID: access to `getEJB [Local] Object ()`

Tx: access to `getUserTransaction ()`

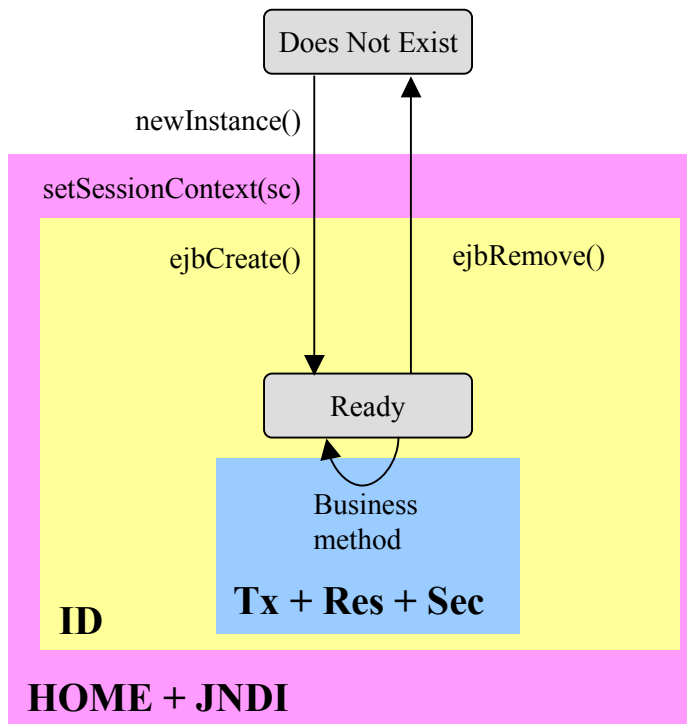
Sec: access to `getCallerPrincipal ()` and `isCallerInRole (String)`

JNDI: access to `java:comp/env`

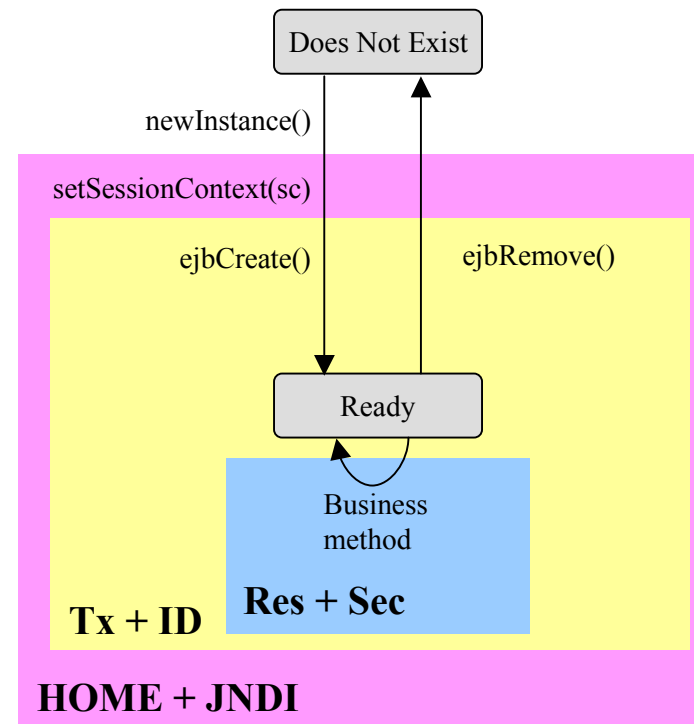
Res: access to `UserTransaction` interface, `Resource manager`, and `enterprise beans`

Stateless session beans

CMT



BMT



Legend:

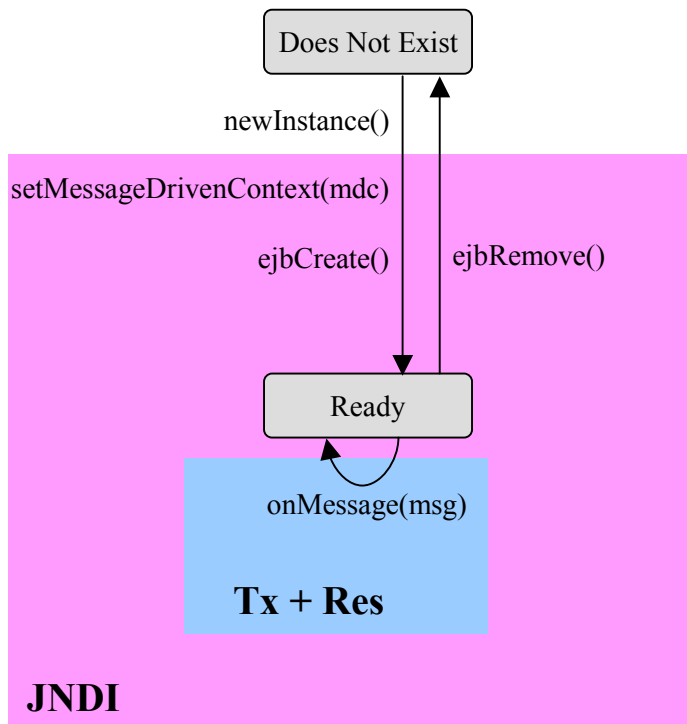
HOME: access to `getEJB [Local] Home ()`
ID: access to `getEJB [Local] Object ()`
Tx: access to `getRollbackOnly ()` and `setRollbackOnly (boolean)`
Sec: access to `getCallerPrincipal ()` and `isCallerInRole (String)`
JNDI: access to `java:comp/env`
Res: access to Resource manager and enterprise beans

Legend:

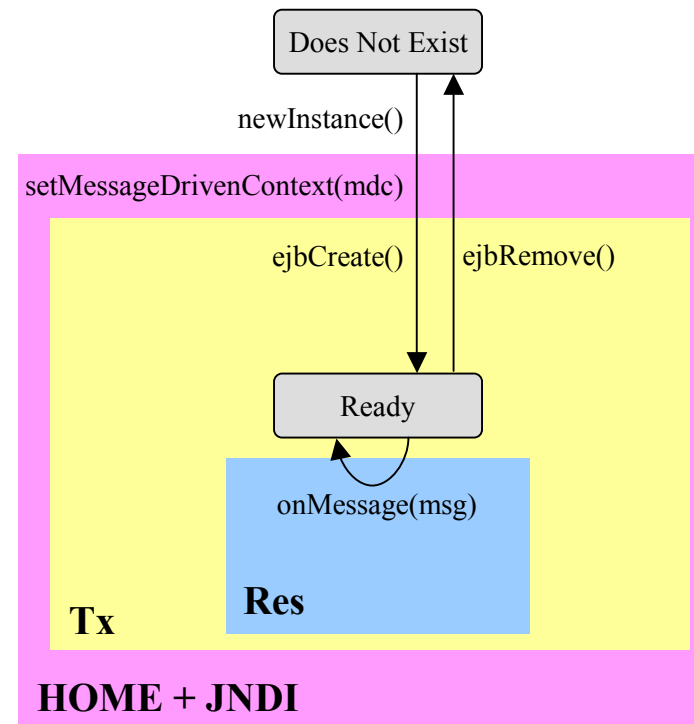
HOME: access to `getEJB [Local] Home ()`
ID: access to `getEJB [Local] Object ()`
Tx: access to `getUserTransaction ()`
Sec: access to `getCallerPrincipal ()` and `isCallerInRole (String)`
JNDI: access to `java:comp/env`
Res: access to UserTransaction interface, Resource manager, and enterprise beans

Message-driven beans

CMT



BMT



Legend:

Tx: access to `getRollbackOnly()` and `setRollbackOnly(boolean)`

JNDI: access to `java:comp/env`

Res: access to Resource manager and enterprise beans

Legend:

Tx: access to `getUserTransaction()`

JNDI: access to `java:comp/env`

Res: access to `UserTransaction` interface, Resource manager, and enterprise beans